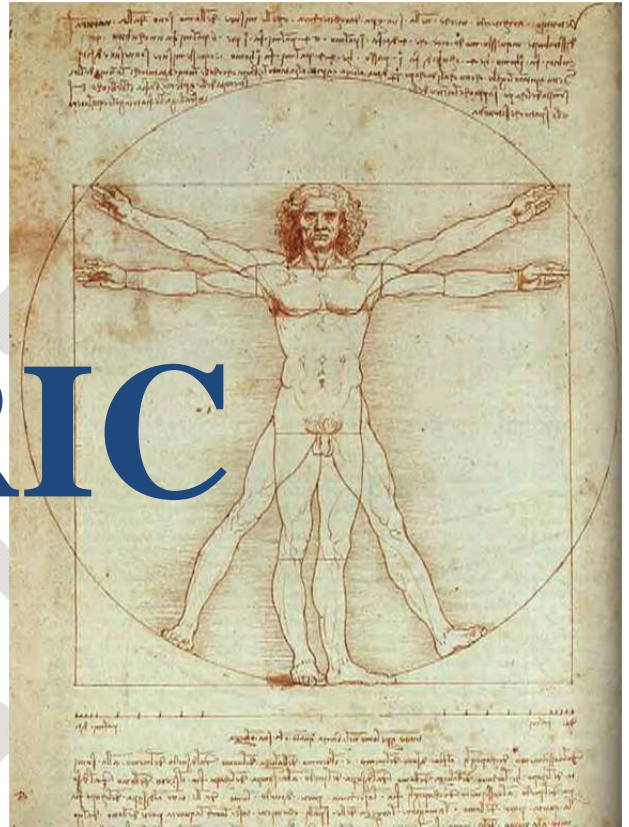


The ELECTRIC HUMAN



Electro-Therapeutic Approaches to Disease Management and Health Maintenance

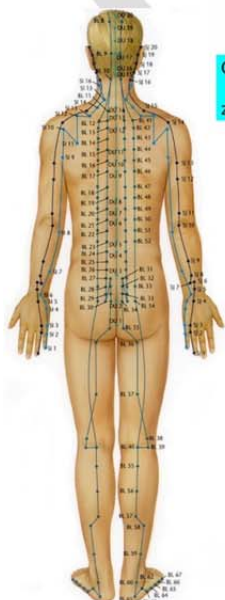
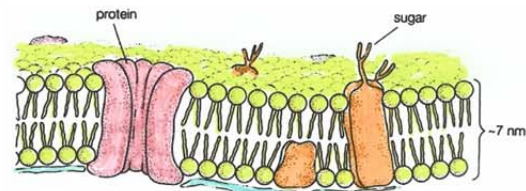
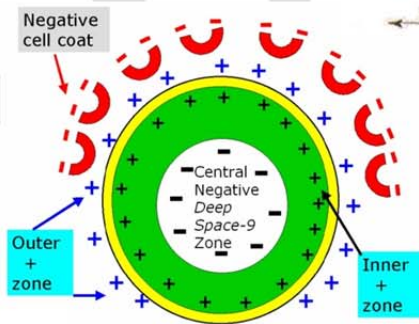
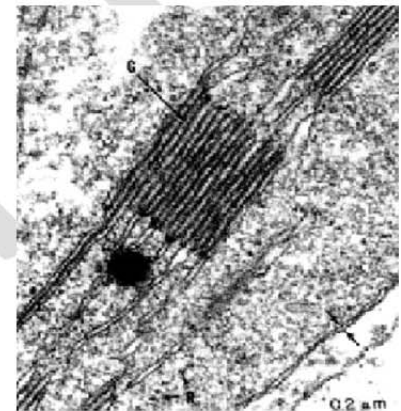
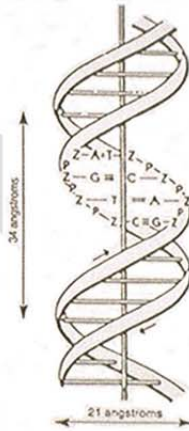
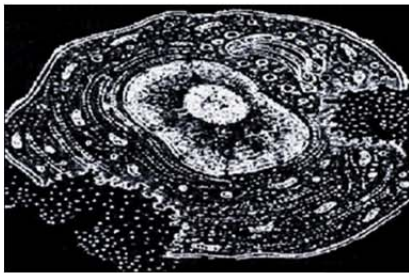
*With application considerations for Cancer, Lyme, Bacterial, Viral,
Immune System, Pain, Wound Healing and other non-conventional
Protocols Including Do-It-Yourself Projects for Electro-Therapeutic
Experimentation and Education*

By Dr. Steve Haltiwanger & Jimmie L. Holman
with Forward by Paul Dorneanu

DRAFT

1-4 An Electric Approach to Physiology

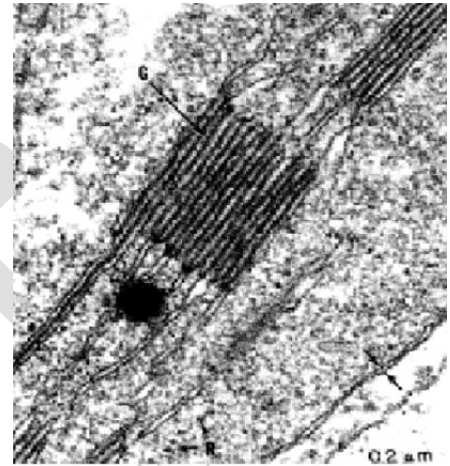
Dr. Haltiwanger's Presentation is part of this paper and covers many of the most important aspects. More complete content and technical explanations and illustrations will be available here in this paper as well as the full collection of slides only partially covered at the conference.



PART 2 - THE SCIENCE OF RIFE

As we most likely have personally experienced or observed, the lay public and even professionals often misunderstand, ignore and even ridicule radically different technologies and new commercial products, when they appear to deviate too much from conventional established approaches. Every new commercial idea or product has its own lifecycle. First it is born in the mind of its creator. Next it is produced and then marketed where it either fails or succeeds.

In order for the marketplace to accept and embrace a radically different new commercial product the public must understand a product's unique benefits and how it differs from other products on the market. This perception and understanding is typically necessary for the success and acceptance and full integration of these concepts into society and the technology of the time.



Each of these topics to be discussed in technical detail

- **The destructive nature of rife ... the common view**
- **A discussion on cellular energy**
- **Concepts of energy and information**
- **Analogies**
- **The electrical nature of the body**
- **the production of energy from fats**
- **The controlling codes of the body**
- **The evidence that shows the body has a magnetic field**
- **Absorption of electromagnetic energy by biological molecules**
- **How are these bioelectrical signals transmitted into the body?**
- **Resonant energy transfer and the concept of cellular radio**
- **Data supporting the concept that cells can respond to external frequencies with metabolic changes**
- **Biological Antennas**
- **The mechanism of resonant electrical frequency interactions with cells**
- **The principle of magnetic induction**

Consideration of “Rife Technology”

The most popular and common view, of electrotherapeutic and resonant frequency is often related as “Rife Technology”. Rife’s science has largely only been visualized as that of cellular destructive disintegration. This has too often been accompanied with the pictorial analogy of the old Ella Fitzgerald Memorex tape commercial shattering the crystal goblet with a single resonate note. Most true rife researchers realize this is likely NOT how the technology works. The actual physics is actually quite well documented in science, physics, research medicine, but simply NOT carried over into practicing allopathic medicine.

By ignoring and concentrating only on the destructive modis operandi of these technologies, we are frankly doing ourselves and others a grave disservice. If we only consider the destructive capabilities, we are probably missing out on 95% of the capabilities.



The nature of resonant frequency therapies *does not technically put any substances into the body.*

Other than the recommended nutritional foods and supplements as important building blocks, we are in essence trying to stimulate effect, manipulate and in some cases, emulate needed processes and substances and conditions.

Frequency technology is used to provide energies to create specific bio-signals that may help modulate the body’s natural magnetic field in order to enhance or interfere with certain specific biological reactions that are already naturally taking place. The manipulation or assistance of these natural processes may be far more important than the devitalization or destruction of specific foreign microbes.

- In particular, to improve energy production from fats by utilizing valid but little known physical principles.
- Ironically, most of us already know and accept what “western medicine” seems to only now be “discovering” That is ...biological molecules of the body work electronically as well as chemically.
- Stimulation of the body with electric or magnetic fields is a well-accepted practice in medicine. Most people are aware that electric or magnetic energy at different frequencies can be generated and applied to the body with electronic devices that are external to the body (Malmivuo and Plonsey, 1995). The application of electric or magnetic energy to activate excitable tissues/cells and subcellular components is called *electric stimulation* or *magnetic stimulation*, respectively.
- **Rife technology also uses bioelectric stimulation**, that is... carefully selected signals and frequencies are externally generated, then coupled, directly, inductively, or capacitively to enhance or supplement the natural signals or processes which should be occurring in a healthy system but which might NOT be present in a compromised one.
- . This paper will explain how chemical reactions can be activated by either chemical substances or by the frequency signals of chemical substances.

A Discussion on Cellular Energy

The single most important function of a cell is the continual and uninterrupted production of energy. Energy is essential, since it is needed to operate the biochemical machinery of all cells. In order to produce an adequate supply of energy the cells of the body require **biofuels** (sugars, fats, proteins) and certain essential nutrients like vitamins, minerals, trace elements and amino acids that act as biocatalysts on these fuels to accelerate the enzyme reactions involved in energy production. These essential nutrients as well as the enzymes and other biomolecules of cells have both unique chemical structures and unique electromagnetic frequency patterns.

It is commonly accepted that chemicals and enzymes are needed to initiate catalytic reactions, however basic scientific research has shown that the application of the correct frequencies can be used to further enhance cyclical catalytic reactions. This will be addressed a bit more later in this paper.

Concepts of Energy and Information



A scientist's conventional way of thinking about energy is to define energy as the capacity to do work. Several hundred years ago the Scottish inventor James Watt developed a more efficient steam engine that launched the Industrial Revolution. Watt did not invent the steam engine he simply discovered ways to make it more efficient.

As we mentioned earlier, at the end of the 19th century Nikola Tesla invented the radio and an Italian inventor named Marconi commercialized it. Marconi simply made Tesla's discovery more available for practical purposes. The invention of the radio allowed people for the first time to use wireless communication to transmit electromagnetic energy from one place to another. With the invention of the radio we see that electromagnetic energy can be used to transmit information from one place to many places. We now take wireless information transfer for granted.

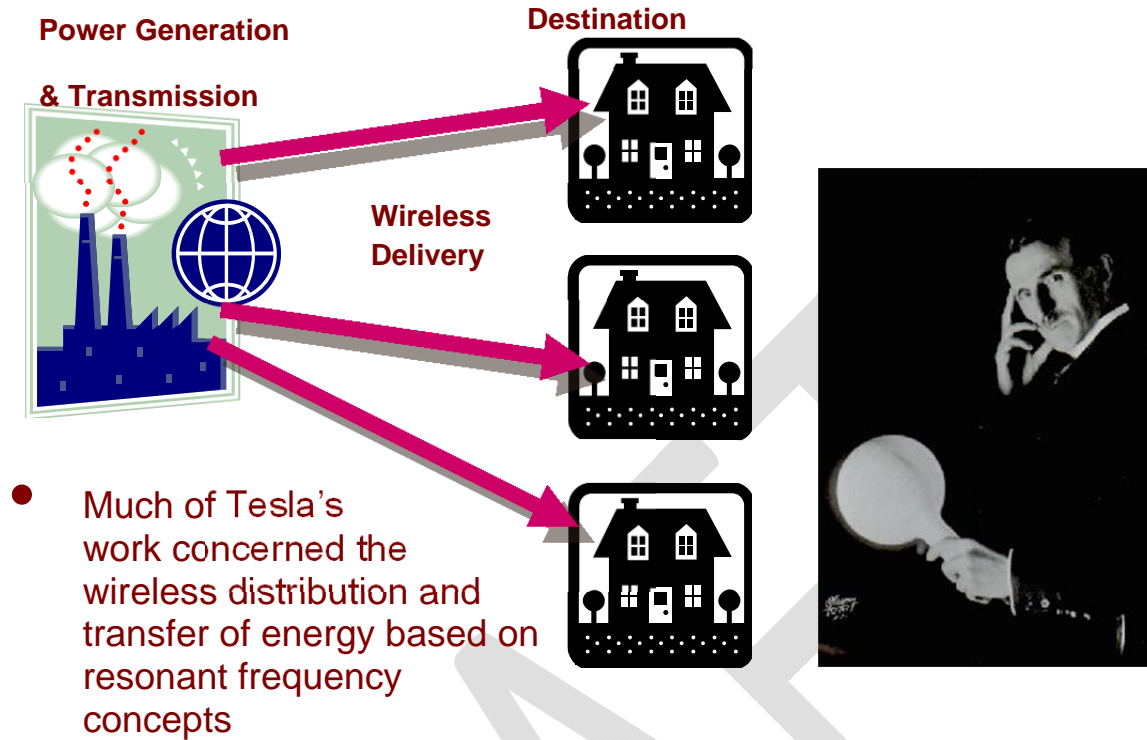
With a similar line of thinking, others (including Tesla), prior to Rife, most likely discovered many of the underlying physics. Rife however, with the assistance of his microscope, made the underlying knowledge, practical, useful and visually documentable.

We know that in the late 1800s, Tesla was involved and lecturing both domestically and abroad specifically on electromedicine as well as on specific designs for the implementation of this technology. **[reference lectures]** It is known from Teslas notes, now located in Serbia that his passion and interest extended to the design of circuits and devices specifically for practice and treatment in medical environments ... including self-treatment.

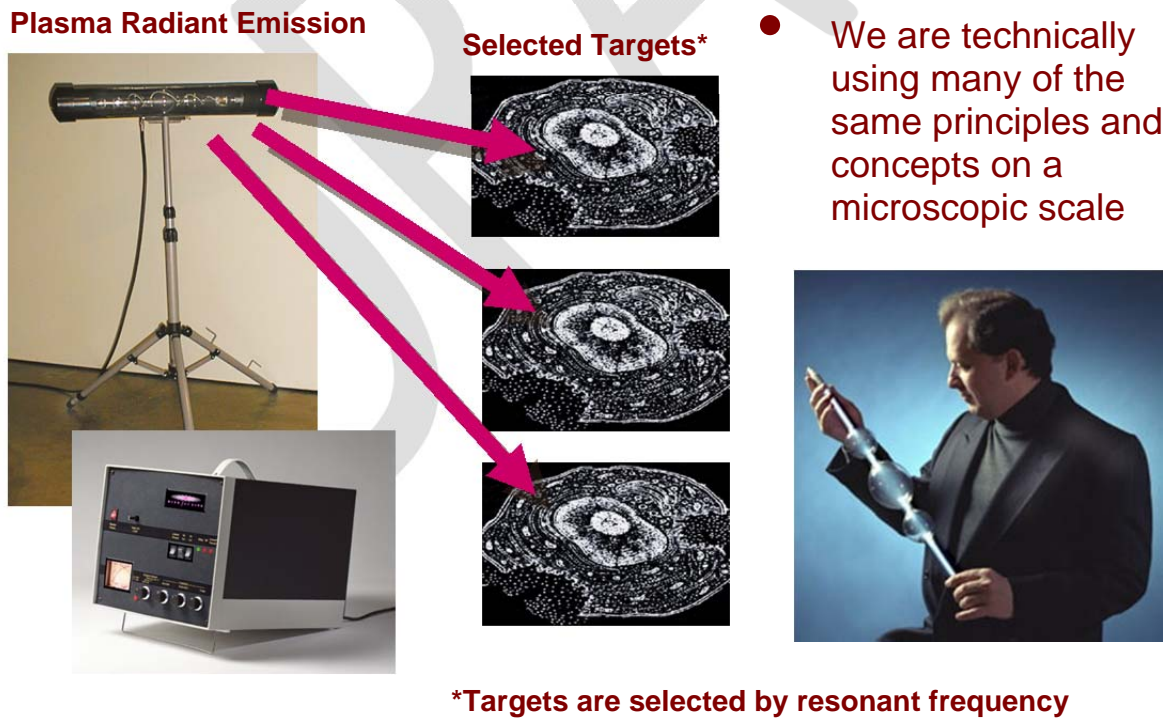
Although Tesla's most well known work was in his development of AC current and power generation, his passion was largely with the wireless transfer of power based on frequency concepts. Our interests are really not that dissimilar to his were, and incorporate BOTH of his related interests in electro-medicine and wireless delivery of power.

DRAFT

Wireless Delivery of Power



Energy Transfer and Manipulation



What our technology has apparently done is develop an effective system of delivering certain specific natural biological frequencies or energies into the body to disrupt, modify or assist the ideal electro-chemical processes. It also may ideally alter (both beneficially and intentionally destructively) the charges and molecular combinations responsible for necessary cellular functioning, operation, communications, and overall structural integrity and vitality.

Analogies

Understanding the mechanism of action of this science is difficult for most people since the general belief is that increased energy production in the body can only result from the use of substances that are consumed or absorbed through the skin, (i e. pharmaceuticals). This general misunderstanding is largely because of the educational system which has indoctrinated and oversimplified the science in this manner. Unfortunately, much of the western medical establishment has this oversimplified rationalization as well.

Understanding the technology and the science behind Rife technology is possibly best through the use of, (maybe oversimplified), analogies like the concept of radio or electrical components. This may allow the reader to better visualize the underlying concepts, processes, and applications. These will be discussed in more detail later in the paper in order to help relate the biophysical principles that underlie the mechanism of action of today's evolving technology.

IN-WORK:

SECTION 2 – Physics & Physiology

SECTION 3 – Strategies & Considerations

SECTION 4 – An Integrative Approach for the Advancement
of Allopathic & Alternative Medicine