



EQUIPMENT/ DEVELOPMENT

An Introduction to PulsedTech's Bioenergetic & Bioelectric Technologies

and other Resonant Frequency Concepts



Jimmie L. Holman

Paul V. Dorneanu



Part 3 Equipment Development

Strategic Alliance

- A welcome strategic alliance and partnership between 3 world leaders to provide the very finest in precision instrumentation, education and guidance



PULSED
TECHNOLOGIES

PULSED TECHNOLOGIES
RESEARCH

HER Technologies - PFG2z



PULSED
TECHNOLOGIES

PULSED TECHNOLOGIES
RESEARCH



PULSED
TECHNOLOGIES
RESEARCH

HER Technologies - PFG2z



PULSED
TECHNOLOGIES



PULSED TECHNOLOGIES
RESEARCH

Equipment Types

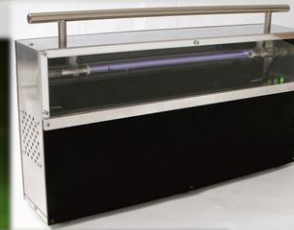


- Simple **CONTACT**
- **EMEM** (high voltage/low current)
- **Bare-Rife** (RF high current / low voltage)
- **Hybrids** and highly developed versions of the categories

Note: ALL items show here represent early developments of Holman & Dorneanu's work and does NOT necessarily represent their current state-of-the-art

Instrument Categories

- **CONTACT:** The PFG series devices represent the heart of all Pulsed Technologies systems and allows for direct electrode contact with subject.
- **RADIANT:** The P3 (Plasma) and PPLED (new generation specialty diodes) devices series allow for untethered, more convenient, extended exposure
- **PROFESSIONAL/HYBRID**
- **SPECIALITY:** Custom accessories for special needs applications.



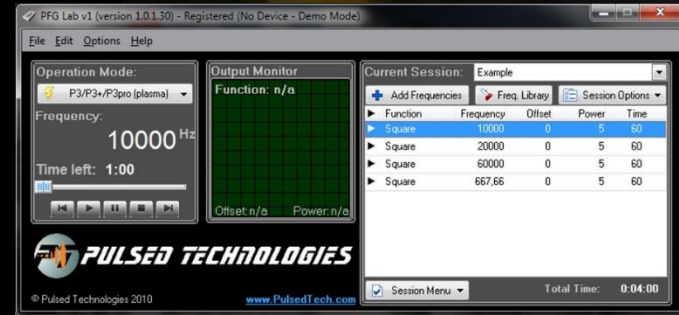
PFG2z Personal Device



www.pulsedtech.com



- Earlier Generation PFG2z Precision Function Generator

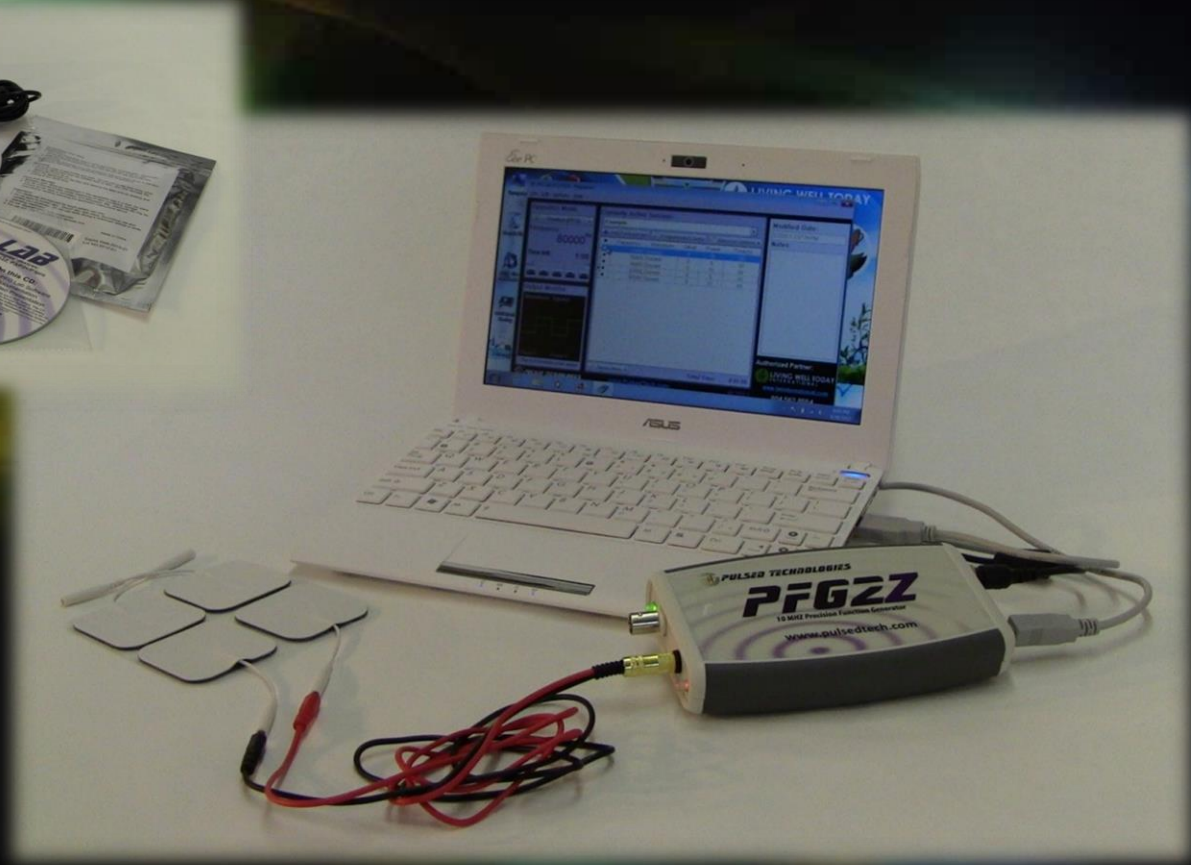


PFG2z

10 MHz Precision Function Generator

PFG2z – 4th Generation Instrument

- Design changes are largely via software & minor hardware and feature improvements



PFG2x – 3rd Generation Instrument



PFG2(a) – 2nd Generation Instrument



PFG(1b) – 1st Generation Instrument

- The PFG1b Precision Function Generator was originally available in limited supplies only to professionals and serious researchers.



PFG2z

- Precision Function Generator

Also Includes:

- Power Supply
- USB Interface, Electrode & Extension Cables
- Reusable Electrode Pads &
- PFG Lab software



PFG2z

- Designed to be used ANYWHERE !



Current PFG2z Instrument – HER Tech

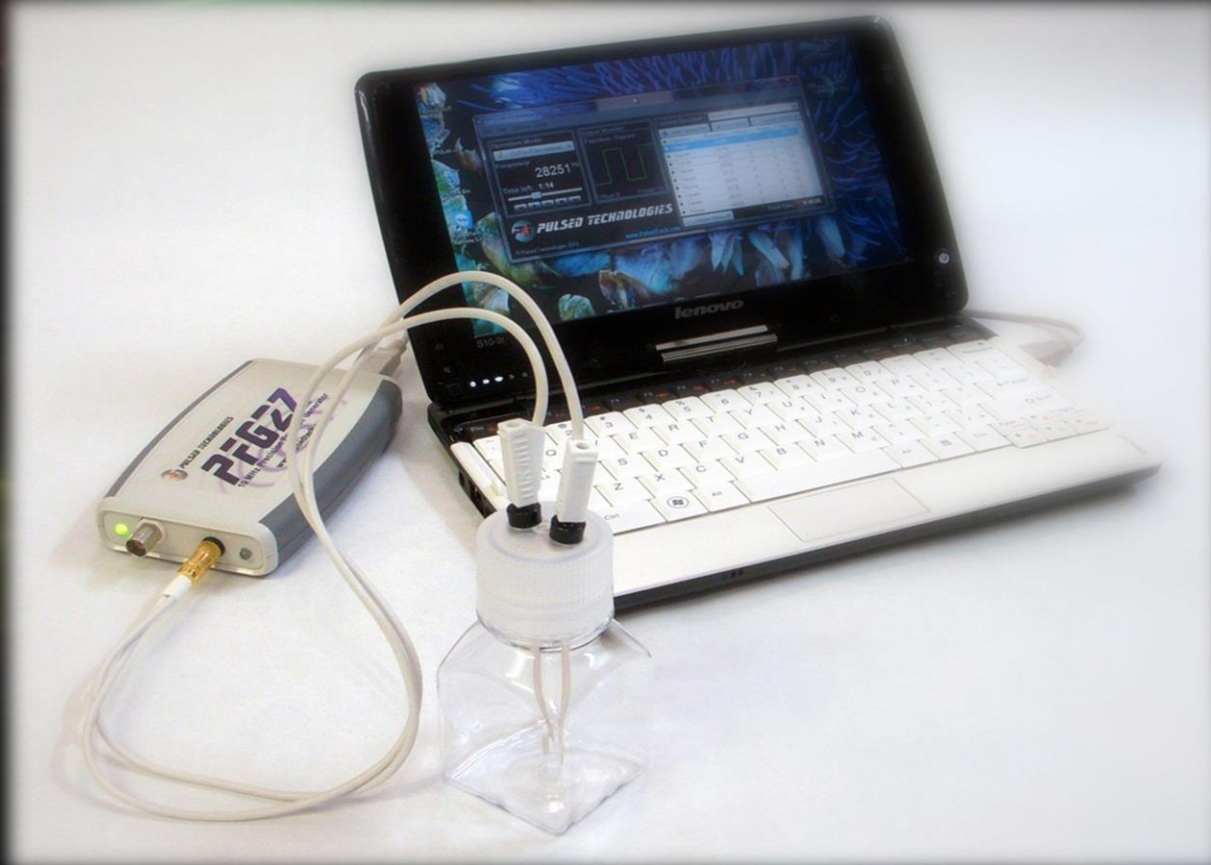


Current PFG2z Instrument – HER Tech

- Co-Developed for Mid-Eastern Market
- Distributed via H.E.R. Technologies



PFG2z Personal Instrument with iCS Accessory



iCS Accessory



- Extremely High-Grade Colloidal Silver Solution may be generated with any of the Pulsed Technologies PFG or newer P3pro devices and the iCS Accessory.
- iCS solution becomes the “media” for user-defined IMPRINTABILITY of custom protocols.
- Custom Protocol Imprinting occurs only AFTER initial CS solution is manufactured.

iCS Accessory

- Traditional (crude) methods of CS verification typically suggested on the net and by manufacturers ARE NOT VALID for the exceptional grade CS produced by this method.
- Tyndall cone (light beam) produced with a laser reflecting off large silver particles is NOT present when atomic cluster size is SMALLER than the wavelength of light
- Tyndall Cone actually is an indicator of POOR quality CS (large ineffective particle cluster size)!!!
- TDS (Total Dissolved Solids) Meters typically sold for testing tap or drinking water often are not useful or accurate for this grade of solution and must be examined with laboratory grade equipment and resources.

Early Imprinting Experiments



- Earlier imprinting via pulsed plasma, while apparently successful was quite limited to the few who could afford the experimental equipment and never intended for end-user manufacturer.

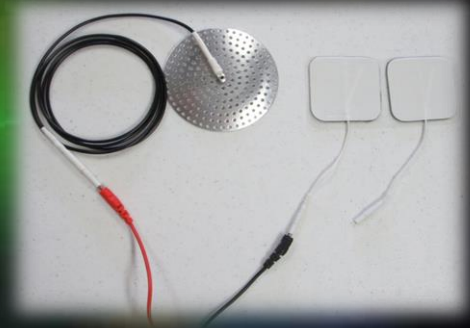
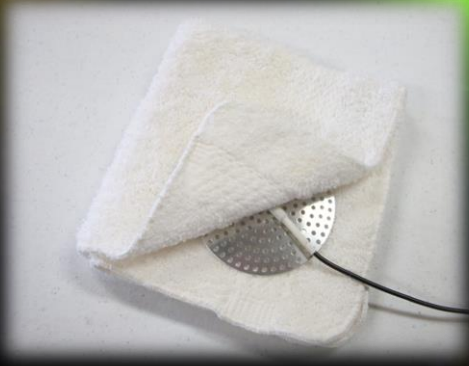
ISSUES/CONCERNS

- Complex Setup
- Expensive equipment setup
- Extensive knowledge requirements
- Limited frequency range
- Limited ability to validate

Immerse-able Electrode

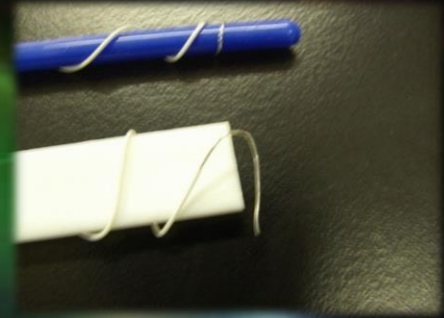
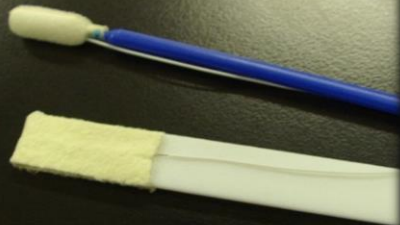


- May be used as an electrode in a footbath for excellent large area conductivity
- Or in a moist/wet cloth for localized application to wound area
- Replaces one of the conventional electrodes

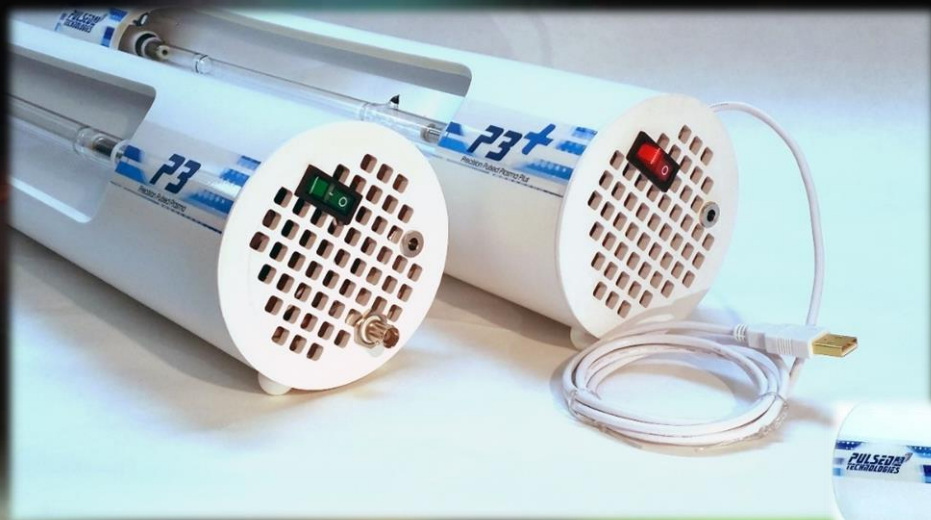


Disposable Mouth Probe

- Method of localized electrode placement when target area is very small, such as a tooth or mouth sore.
- Other electrode is conventional and may be placed anywhere on the body such as neck or shoulder.



P3 vs P3+



- The P3 Requires the use of a separate PFG series device for proper operation.
- The P3+ includes an internal PFG for precision frequency generation.





- The P3 Requires the use of a separate PFG series device for proper operation.
- Required cables are supplied.

- This configuration allows the use of the PFG to be also utilized for other purposes (i.e. “contact method”, production of “imprintable colloidal silver”, etc



P3+

- Simple USB interconnect to internal PFG supplied cable and software



P3 Custom Case



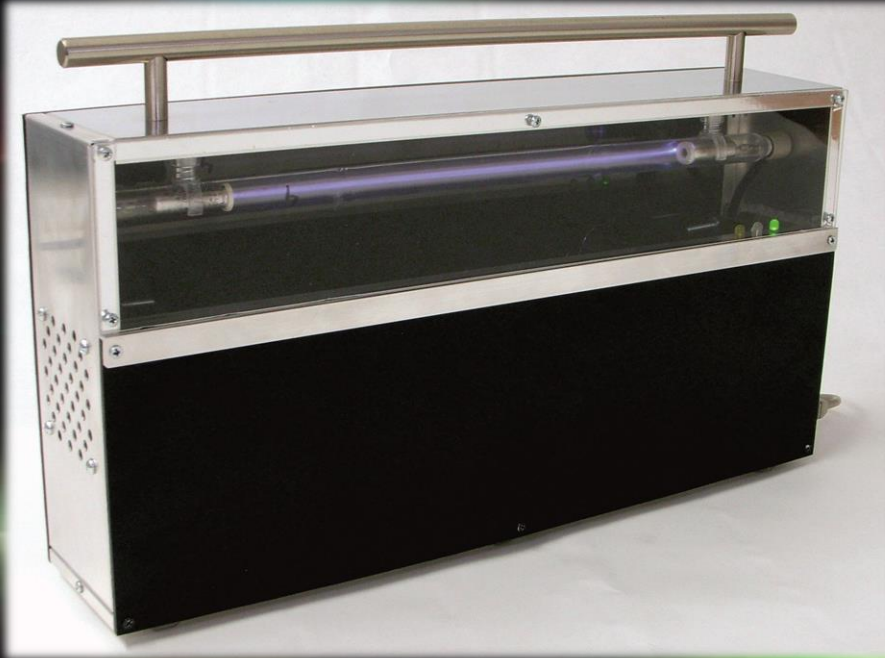
P3pro



- The latest generation P3pro, Precision Pulsed Plasma research instruments also have the capability for electrode and iCS accessory attachment.



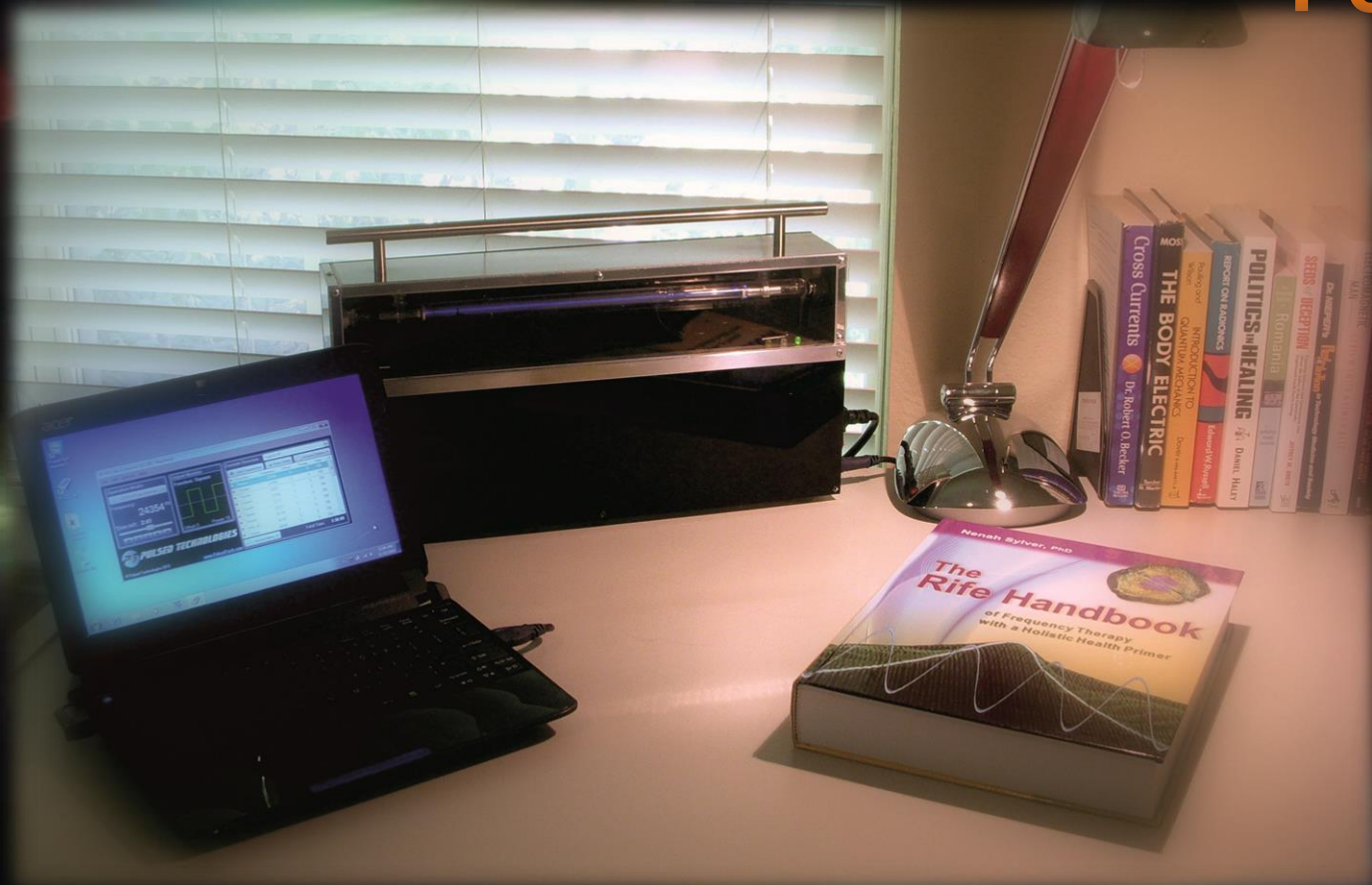
P3pro



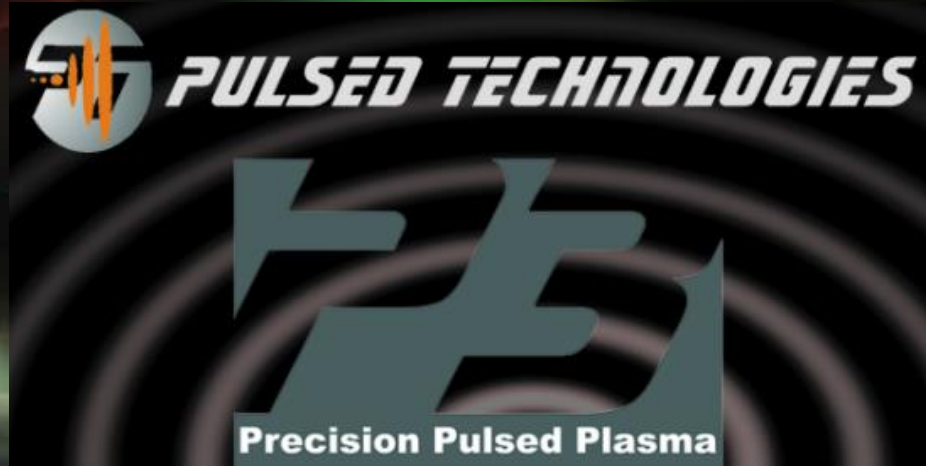
- The latest generation P3pro, Precision Pulsed Plasma Research Instruments also have the capability for electrode and CS accessory attachment.



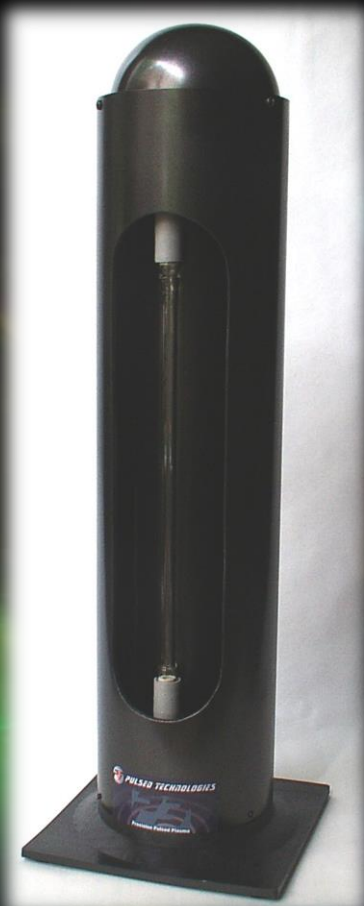
P3pro



P3 Plasma Technology



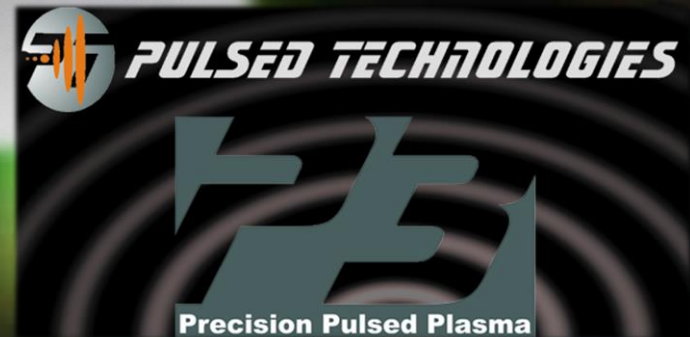
- Pulsed Technologies P3 represents the latest developments in precision pulsed plasma for resonant frequency research.



P3pro Research Prototype

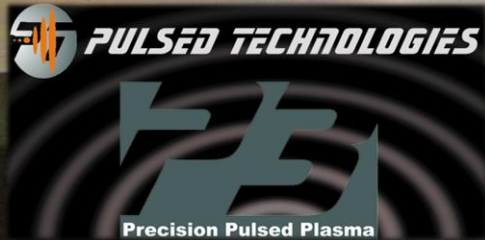
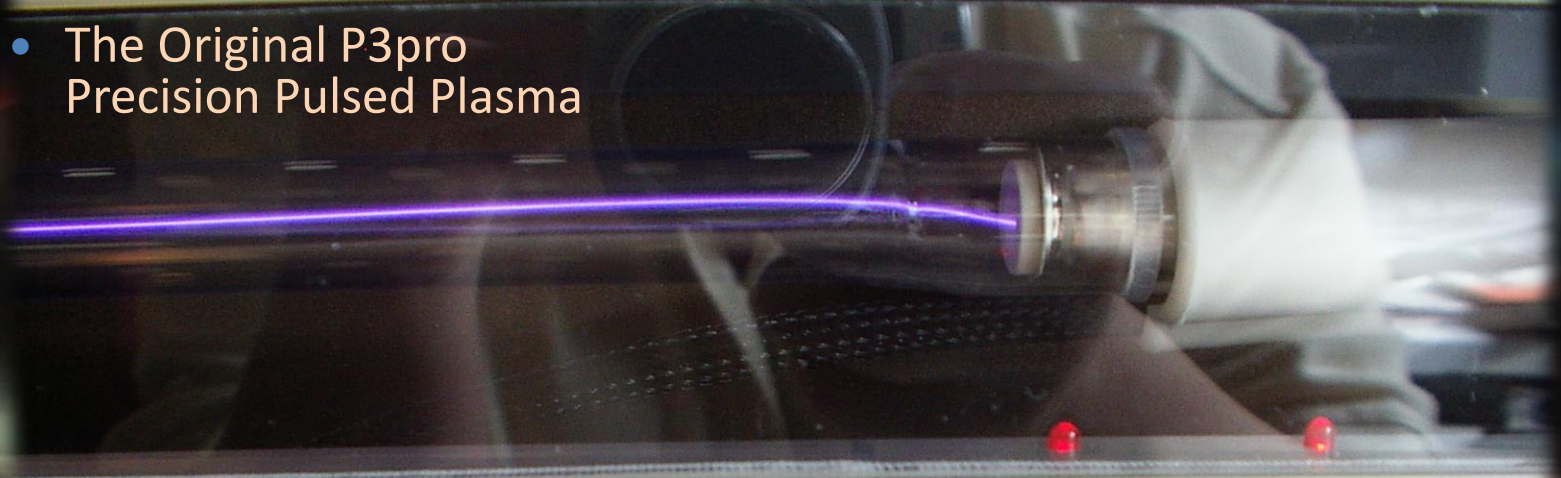


- The Original P3pro Precision Pulsed Plasma



P3pro Research Prototype

- The Original P3pro Precision Pulsed Plasma



PPLIED



- Precision Pulsed (high output) new generation of LEDs provide excellent wide spectrum precision pulsing through homeopathic samples to theoretically modulate and embed homeopathic information onto the photonic carrier.

PPLED

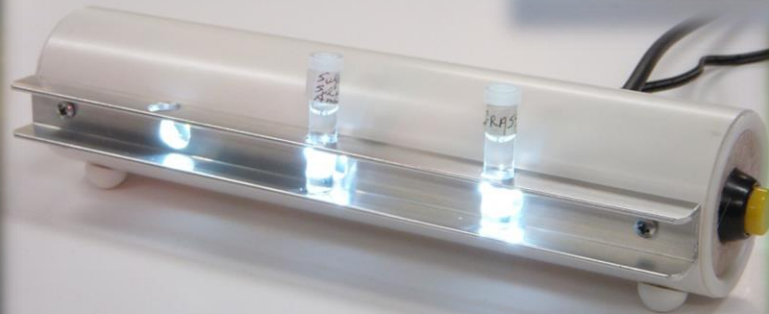
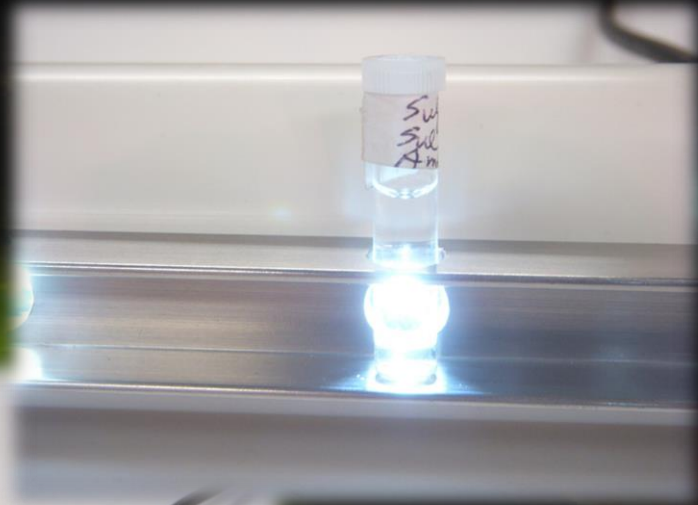
- Precision Pulsed (very high output) new generation of LEDs
- Spectral output across “therapeutic spectrum”



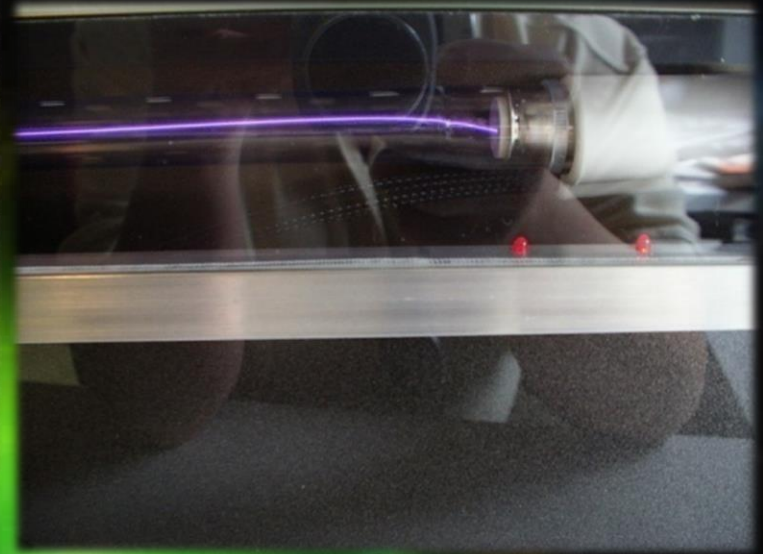
- Any Pulsed Technologies PFG device with PFG Lab Software can precisely drive the PPLED device with accurate and scripted frequency pulse rates with waveform control

PPLIED

- Precision Pulsed Bursts provide the photonic carrier for theoretical delivery of homeopathic information



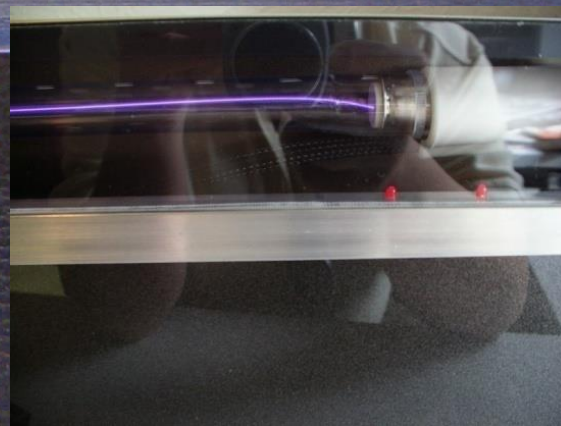
Plasma Tube Development



- Pulsed Technologies decade-long effort in development of an ultimate Plasma tube continues development and improvement. The tubes are optimized for the latest generation P3 series of devices

Advanced Plasma Tube Development

- Pulsed Technologies effort and development of “the” ultimate Plasma tube continues. Improvements and advances in superior tube and coil designs allow for exceptional performance. All PulsedTech plasma tubes are always optimized for the latest generation P3 series of devices

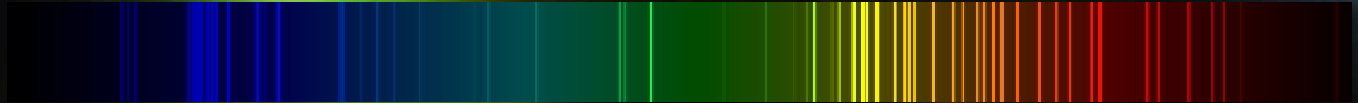


Spectral Emission

- Helium



- Neon



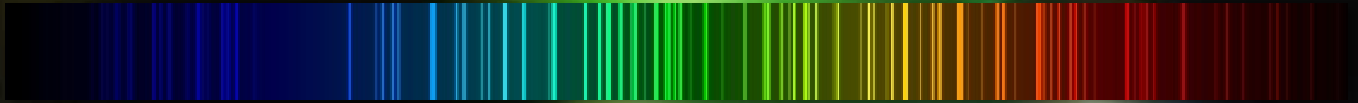
- Argon



- Krypton



- Xenon



Spectral Data

Helium

3964.73 204009.27 14026.19 504026.36 54120.82 124120.99 24143.76 34387.93 104437.55 34471.48 2004471.68 254685.40 64685.70 304713.15 304713.38 44921.93 205015.68 1005047.74 105411.52 55875.62 5005875.97 1006560.10 86678.15 1006867.48 37065.19 2007065.71 30

Neon

4219.74 1504233.85 1004250.65 1204369.86 1204379.40 704379.55 1504385.06 1004391.99 2004397.99 1504409.30 1504413.22 1004421.39 1004428.52 1004428.63 1004430.90 1504430.94 1504457.05 1204522.72 1004537.75 104540.38 104569.06 1004704.40 154708.86 124710.07 104712.07 104715.35 154752.73 104788.93 124790.22 104827.34 104884.92 105005.16 45037.75 105144.94 105330.78 255341.09 205343.28 85400.56 605562.77 55656.66 105719.23 55748.30 125764.42 805804.45 125820.16 405852.49 5005872.83 1005881.90 1005902.46 605906.43 605944.83 1005965.47 1005974.63 1005975.53 1205987.91 806030.00 1006074.34 1006096.16 806128.45 606143.06 1006163.59 1206182.15 2506217.28 1506266.50 1506304.79 606334.43 1006382.99 1206402.25 2006506.53 1506532.88 606598.95 1506652.09 706678.28 906717.04 206929.47 1007024.05 907032.41 1007051.29 507059.11 80

Argon

3925.72 353928.62 503932.55 253946.10 703947.51 73948.98 353979.36 203994.79 354013.86 504033.81 504035.46 200402.89 1504044.42 504052.92 1004072.01 2004072.39 704076.63 254079.57 354082.39 254103.91 1504131.72 3004156.09 354158.59 4004164.18 504179.30 354181.88 504190.71 1004191.03 504198.32 2004200.67 4004218.67 254222.64 254226.99 254228.16 1004237.22 1004251.19 254259.36 2004266.29 1004266.53 704272.17 1504277.53 5504282.90 204300.10 1004300.65 254309.24 704331.20 2004332.03 504333.56 1004335.34 504345.17 254348.06 8004352.21 504362.07 254367.83 504370.75 2004371.33 704375.95 504379.67 1504385.06 504400.10 704400.99 2004426.00 4004430.19 1504431.00 504433.84 504439.46 204448.88 354474.76 1004481.81 2004510.73 1004522.32 204530.55 204545.05 4004564.41 204579.35 4004589.90 4004596.10 154609.57 5504628.44 74637.23 354657.90 4004702.32 154721.59 204726.87 5504732.05 504735.91 3004764.87 8004806.02 5504847.81 1504865.91 504879.86 8004889.04 704904.75 204933.21 354965.08 2005009.33 505017.16 705062.04 705090.50 205141.78 1005145.31 705151.39 55162.29 155165.77 255187.75 205216.81 205221.27 75421.35 55451.65 105495.87 255506.11 55558.70 255572.54 105606.73 355650.70 205739.52 105834.26 55860.31 105882.62 155888.58 255912.09 505928.81 155942.67 55987.30 75999.00 56025.15 56032.13 706043.22 356052.72 106059.37 206098.80 76105.64 106114.92 106145.44 106170.17 76172.28 1506173.10 106212.50 106215.94 56243.12 256296.87 76307.66 156369.58 76384.72 206416.31 706483.08 256538.11 156604.85 156638.22 256639.74 206643.70 506660.68 56664.05 56666.36 256677.28 1006684.29 356752.83 1506756.16 56766.61 156861.27 206871.29 1506879.58 56888.17 106937.66 506951.48 76960.25 76965.43 99997030.25 1507067.22 99997068.74 1007107.48 257125.82 257147.04 10007158.84 15

Krypton

3906.18 1503920.08 2003994.84 1003997.79 1004057.04 3004065.13 3004088.34 5004098.73 2504109.25 1004145.12 2504250.58 1504273.97 10004282.97 1004292.92 6004300.49 2004317.81 5004318.55 4004319.58 10004322.98 1504351.36 1004355.48 30004362.64 5004369.69 2004376.12 8004386.54 3004399.97 2004425.19 1004431.69 5004436.81 6004453.92 6004463.69 8004475.01 8004489.85 4004502.35 6004523.14 4004556.61 2004577.21 8004582.98 3004592.80 1504615.29 5004619.17 10004633.89 8004658.88 20004680.40 5004691.30 1004694.36 2004739.00 30004762.44 3004765.74 10004811.76 3004825.18 3004832.08 8004846.61 7004857.20 1504945.59 3005022.40 2005086.52 2505125.73 4005208.32 5005308.66 2005333.41 5005468.17 2005562.22 5005570.29 20005580.39 805649.56 1005681.89 4005690.35 2005832.86 1005870.91 30005992.22 2005993.85 606056.13 606420.18 3006421.03 1006456.29 2006570.07 1506699.23 606904.68 100

Xeon

3907.91 1004037.59 1004057.46 2004098.89 1004158.04 2004180.10 10004193.15 5004208.48 3004209.47 1004213.72 3004215.60 1004223.00 3004238.25 4004245.38 5004251.57 1004296.40 5004310.51 5004330.52 10004369.20 2004373.78 1004393.20 5004395.77 5004406.88 2004416.07 1504448.13 5004462.19 10004480.86 5004521.86 1004734.15 6004792.62 1504807.02 5004829.71 4004843.29 3004916.51 5004923.15 5004971.71 2004972.71 4004988.77 3004991.17 1005028.28 2005044.92 2005080.62 10005122.42 3005125.70 1005178.82 1005188.04 3005191.37 4005192.10 1005260.44 5005261.95 5005292.22 20005309.27 3005313.87 10005339.33 20005363.20 2005368.07 2005372.39 5005392.80 1005419.15 30005438.96 8005445.45 3005450.45 2005460.39 4005472.61 10005494.86 6005525.53 2005531.07 6005566.62 1005616.67 3005659.38 3005667.56 6005670.91 1505695.75 1005699.61 2005716.10 2005726.91 5005751.03 5005758.65 3005776.39 3005815.96 1005823.89 3005824.80 1505875.02 1005893.29 3005894.99 1005905.13 2005934.17 1005945.53 5005971.13 3005976.46 20006008.92 2006036.20 10006051.15 20006093.50 6006097.59 15006101.43 4006115.08 1006146.45 1006178.30 1506179.66 1206182.42 3006194.07 5006198.26 1006220.02 1006270.82 5006277.54 4006284.41 1006286.01 1006300.86 2506318.06 5006343.96 4006356.35 6006375.28 6006397.99 1006469.70 3006472.84 1506487.76 1206498.72 1006504.18 2006512.83 3006528.65 2006533.16 1006595.01 10006595.56 1006597.25 4006598.84 1006668.92 1506694.32 3006728.01 2006788.71 1506790.37 1006805.74 10006827.32 2006872.11 1006882.16 3006910.22 806925.53 1006942.11 8006976.18 1006990.88 20007082.15 150

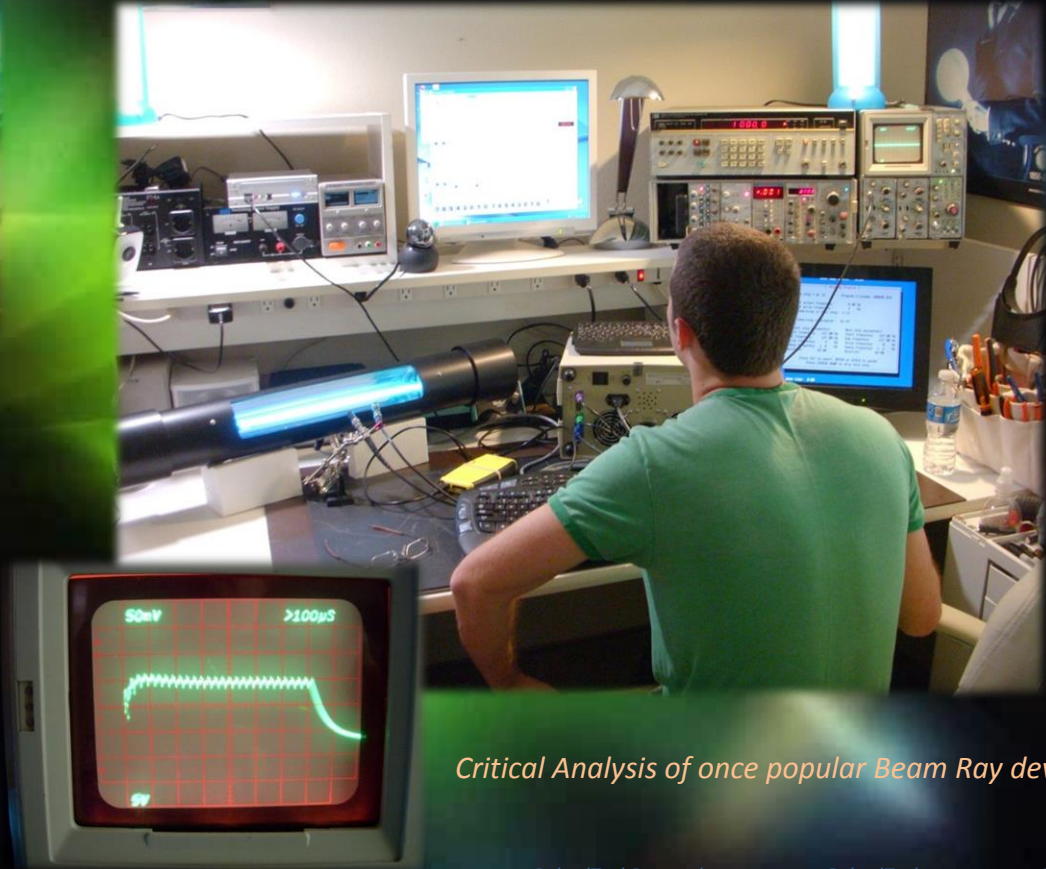
P3 Development

- The P3 (Precision Pulsed Plasma) development continues, catering toward the end users' needs and special applications.

Research & Development in Dallas, Texas

Assessment and Analysis

- Diligent and careful technical analysis (and sometimes “autopsy”) of competitors’ products have afforded Pulsed Technologies great insights to superior design.



Critical Analysis of once popular Beam Ray device

DIY EMEM Device (aka “Poor Man’s Rife”)

- Realizing not everyone has the financial resources or urgent need to purchase a device, Holman & Dorneanu have made detailed construction plans openly available for those who wish to build a useful plasma device.
- Ironically, many/most of the current manufacturers of Rife designs have constructed from these open design and haven’t advanced much past these limitations.

...an introduction to
rife|technology
Poor Man's Rife - HV Plasma Project



Experimenting with Plasma is certainly within the grasp of most individuals. The general circuit shown here is the basic foundation for most 234236 type device that have become available in recent years. There are of course variations in the frequency range, but handle most of the lower frequency ranges typically in most frequency lists.

1. Use our other RIFE - Contact Device project, this device can be made to be "triggered" into the PC speaker circuit (to be installed with the PC sound card, software is freely available).



The diagram and sample presented here, should be enough to get you started on a variable system or at least better understand many other "variable" projects. If you purchase versions of the type 234236, you better understand the principles and necessary precautions necessary in its design ... (stay DO NOT!)

The circuit is simple enough that since the potential's original publication, there have been many that have constructed working devices which exhibiting more a full understanding of necessary safety and design precautions.

Careless recklessness, or even ignorance of certain electrical principles and absence of necessary design precautions could kill YOU!!!

Copyright 2014, James L. Holman, all rights reserved

RT Plasma Basic Components



Other physical configurations selected only to the builder's imagination, specific needs and requirements.

There are only a few suggestions which should be absolutely adhered to:

- Use PROPER High-voltage cabling on the television
- Substantially ground devices from any exposed high-voltage currents
- Use a power supply of sufficient current for your application
- Use an enclosure to sufficiently support and protect your circuit
- Use materials appropriate to separate the various dangerous currents
- Understand the limitations of the type of device and don't exceed those limitations (i.e. frequency)
- Understand the differences in A/C charges of large or voltage you are working with ...
- BE CAREFUL!



As anyone progresses in his or her education and experimentation, more accurate and sensitive specialized equipment is desired to more effectively and/or accurately construct their equipment. Many correctly built constructions can better be adjusted to signal generators which cannot be easily constructed. There are a higher accuracy, computer controlled signal generators developing the optimal signal to the plasma unit.



We strongly encourage everyone to examine, investigate, and adhere themselves to the existing advice, but more importantly, to share their findings and thoughts with others.

More detailed technical information can be found on the Introduction to Rife Technology website
www.Ashman.net/links/index.php

Copyright 2014, James L. Holman, all rights reserved

<http://www.PulsedTechResearch.com>

Blog Area - see Part 1 of 4 part article, “Poor Man’s Rife Plasma Project”

Poor Man's Rifle - HV Plasma Project

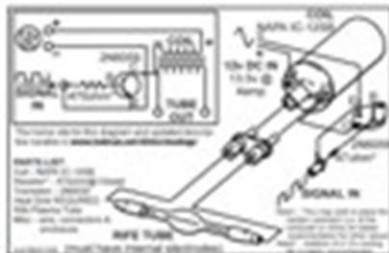


Experimenting with Plasma is certainly within the grasp of most individuals. The general circuit shown here is the basic foundation for most RDSM type device that have become available in recent years. There are of course limitations to the frequency range, but handle most of the lower fundamental frequencies typically on most frequency line.

Like our other RDSM - Contact Device project, this device can likewise be "triggered" with the PC speaker circuit (to be installed with the PC sound card), software is freely available.



Careless workmanship, or even ignorance of certain electrical principles and absence of necessary design precautions could kill YOU!!!!



The diagram and sample presented here, should be enough to get you started on a viable system or at least better understand many of the "available for purchase" systems. If you purchase systems of this type, MAKE SURE the builder understands the principles and necessary precautions necessary in its design **DO NOT!**

The circuit is simple enough that since the plasma's original production, there have been many that have commercially selling device which exhibit less than a full understanding of necessary safety and design precautions.

Copyright 2014 James E. Nelson, all rights reserved



RTP Plasma Basic Components



Other physical configurations are limited only to the builder's imagination, specifications and requirements.

There are only a few suggestions which should be absolutely adhered to:

- Use PROPER High voltage cabling as the above view!
- Sufficiently protect devices from any exposed high voltage currents
- Use a power supply of sufficient current for your applications
- Use an enclosure to sufficiently support and protect your investment
- Use materials appropriate to separate the user from dangerous currents
- Understand the limitations of this type of device and do not exceed those limitations (i.e. frequency)
- Understand the characteristics AND dangers of the type of voltage you are working with
- **BE CAREFUL!**



As anyone progresses in his or her education and experimentation, more accurate and sometimes specialized equipment is desired to more effectively and/or accurately control their equipment. Money saved by self construction can better be allocated to signal generators which cannot be easily constructed. Shown here is a highly accurate, computer controlled signal generator device providing the optimal signal to the plasma unit.

We strongly encourage everyone to examine, investigate, and educate themselves in this amazing science, but more importantly, to share their finding and thoughts with others.

More detailed technical information can be found on the Introduction to Rife Technology website
www.karlman.net/technology



Copyright 2014 James E. Nelson, all rights reserved

Early Bare-Rife Prototypes

- 2 Early RF (Radio Frequency) Systems constructed in late 1990's by Holman & Associates.



Early Research & Development in Dallas, Texas



RifeStation

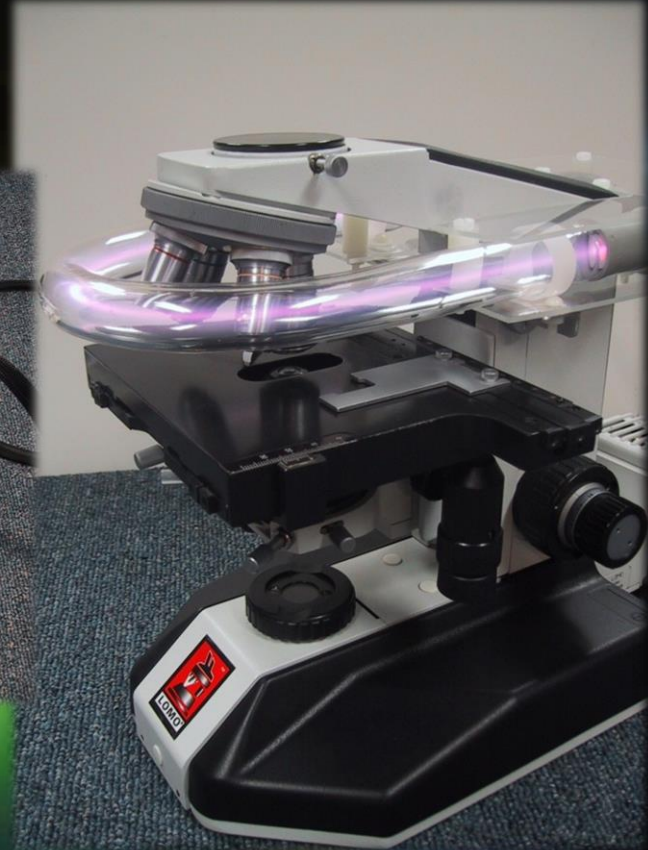


- Accurate, calibrated, and specialized systems, in the hands of cooperative and qualified clinical research personnel will be instrumental in accurate documentation of this technology

Plasma Exposure to Test Subject



*Custom tube design
Jimmie Holman
Fabrication by
Barry Allred / Allred Neon*



- Plasma Tube encompassing specimen to monitor and record effect in real-time.

Proximity Exposure

- It was found, close proximity was not required when working with plasmas
- The inference being, that the modus operandi is NOT a strict EM phenomena
- This meant the microscopes and test instruments themselves did not require any special modifications

Electronic Imprinting

- Is it not already possible to imprint specific electronic signatures into substances such as water to assist the body in natural repair and regeneration ?

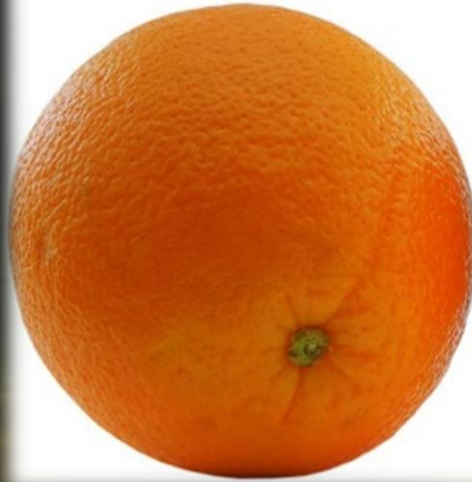


*Custom tube design & fabrication
Barry Allred / Allred Neon*

Comparisons

- Equipment comparisons are often difficult at best.

WANT
WANT
WANT
NEED



10 BUYING CONSIDERATIONS

*for Resonant Frequency &
Precision Pulsed
Plasma Instruments*

 **PULSED TECHNOLOGIES**
RESEARCH

- ☐ Needs
- ☐ Specifications/Capabilities
- ☐ Actual Needs/Guidance
- ☐ Reputation/Reliability
- ☐ Cost
- ☐ Comparisons
- ☐ Future Needs/Expandability
- ☐ Support
- ☐ Repairs/Upgrades
- ☐ Realistic Expectations



Paul Dorneanu and Jimmie Holman

Copyright 2015, Pulsed Technologies Research, all rights reserved. This article and art may be freely distributed without notice for non-commercial use only if used in full graphics and photos have been provided by license or permission of Pulsed Technologies Research, LLC and www.PulsedTech.com

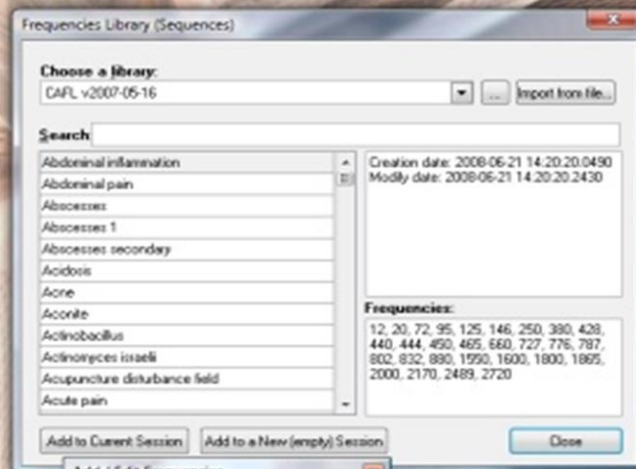
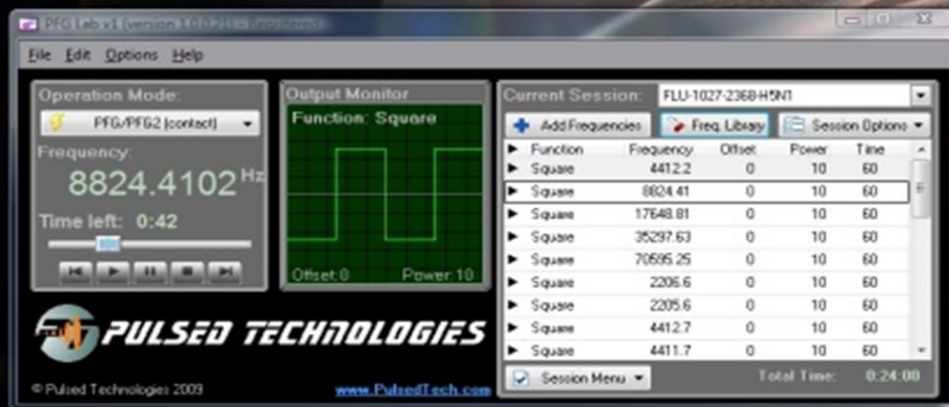
10 Buying Considerations

*for Resonant Frequency
& Precision Pulsed Plasma
Instruments*

PFG Lab Software Suite

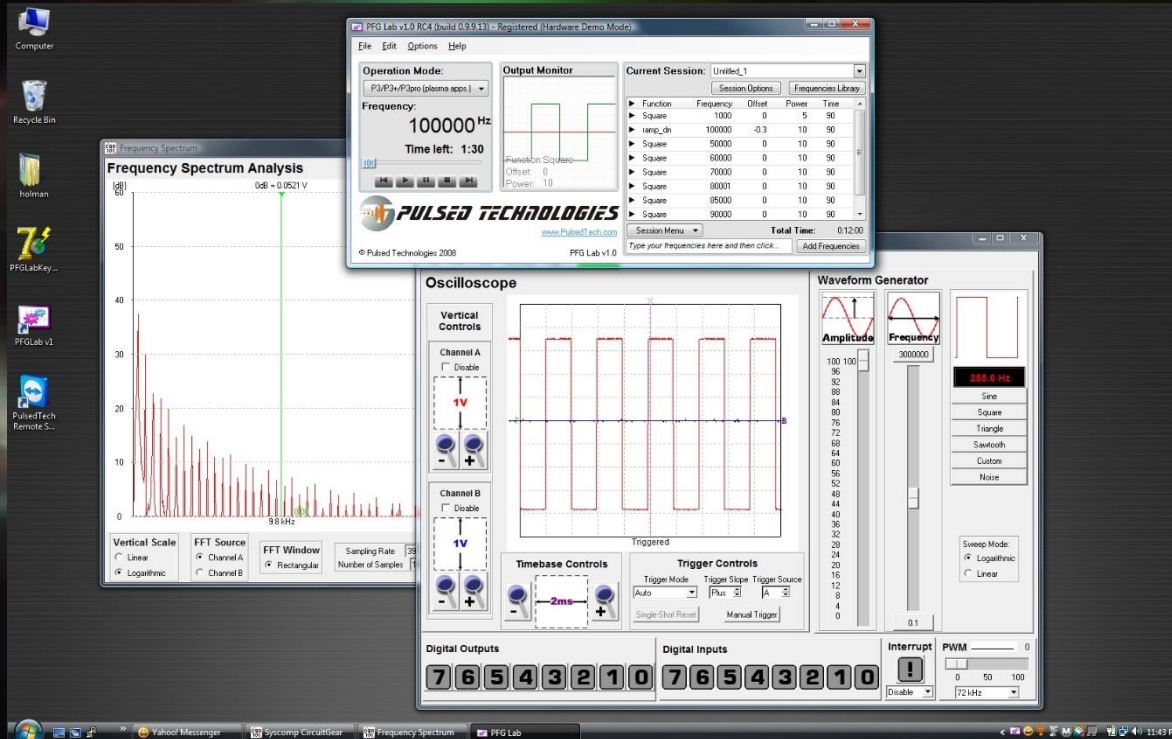
Pulsed Technologies

PFG Lab Software Suite



PFG Lab

Embedded/Hidden Technology



Pulsed Technologies PFG2x is an example of embedded but not yet publically implemented, advanced monitoring and measuring capabilities designed into current technology.

PFG2z Portable Operation

- 12 volt Rechargeable Battery
- 90 watt Power Inverter



Portable Power for PFG2z Operation

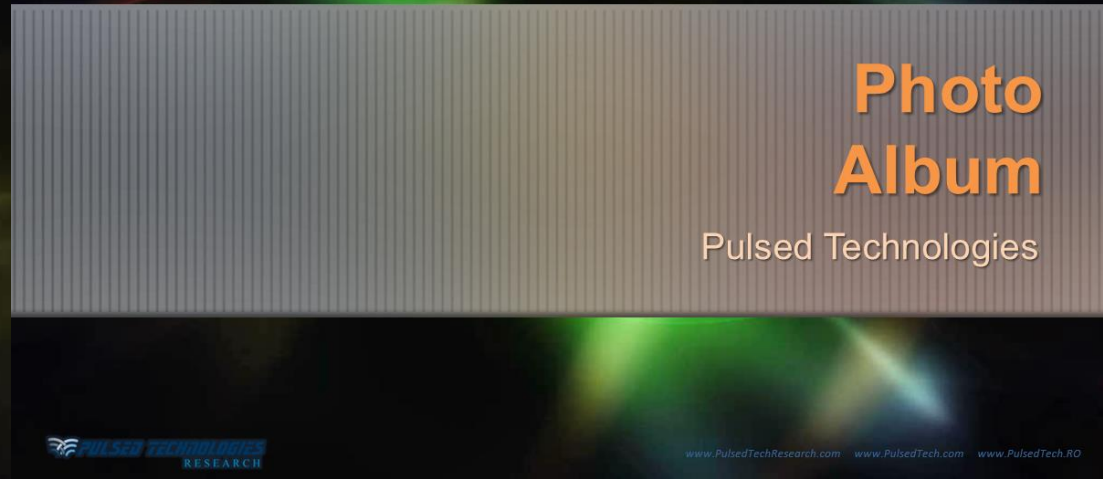


P3pro Portable Operation



- Off-the-shelf Rechargeable Battery & Power Inverter System

For those persons interested, a PulsedTech Photo Album is being made available to see much of the work behind the scenes, the people involved and the development and evolution of the equipment, including next generation possibilities.



Section 11 – PulsedTech Photo Album