



PROTOCOLS

An Introduction to PulsedTech's Bioenergetic & Bioelectric Technologies

and other Resonant Frequency Concepts



Jimmie L. Holman

Paul V. Dorneanu



Part 6 Protocols

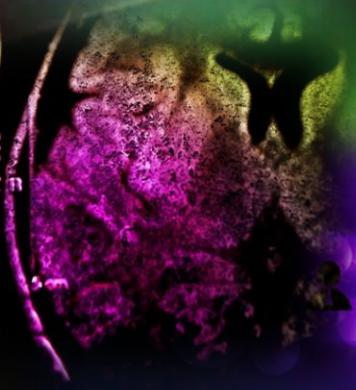
Protocol Development

- Extensive research and strategic planning is needed for the actual application
- Engineer Thomas Drake assists Mr. Holman in the research, development and coordination of all proprietary protocols

What this Technology IS NOT!

Pulsed Technologies

This is NOT Conventional Medicine



This is COMMON SENSE STRATEGIES !



MEDICAL HEALTH CARE MEDICAL HEALTH CARE MEDICAL HEALTH CARE MEDICAL HEALTH CARE MEDICAL HEALTH CARE
MEDICAL HEALTH CARE
MEDICAL HEALTH CARE MEDICAL HEALTH CARE MEDICAL HEALTH CARE MEDICAL HEALTH CARE MEDICAL HEALTH CARE

Transformation of Medicine



- The Flexner Report instituted by John Rockefeller completely changed/shifted the direction of medicine toward Rockefellers “new investments”, ...

MEDICAL EDUCATION
IN THE
UNITED STATES AND CANADA
A REPORT TO
THE CARNEGIE FOUNDATION
FOR THE ADVANCEMENT OF TEACHING
BY
ABRAHAM FLEXNER
WITH AN INTRODUCTION BY
HENRY S. PRITCHETT
PRESIDENT OF THE FOUNDATION

BULLETIN NUMBER FOUR (1906)
(Reprinted in 1960)
(Reprinted in 1975)

60 MADISON AVENUE
NEW YORK CITY 10006

*pharmaceutical
based medicine!*



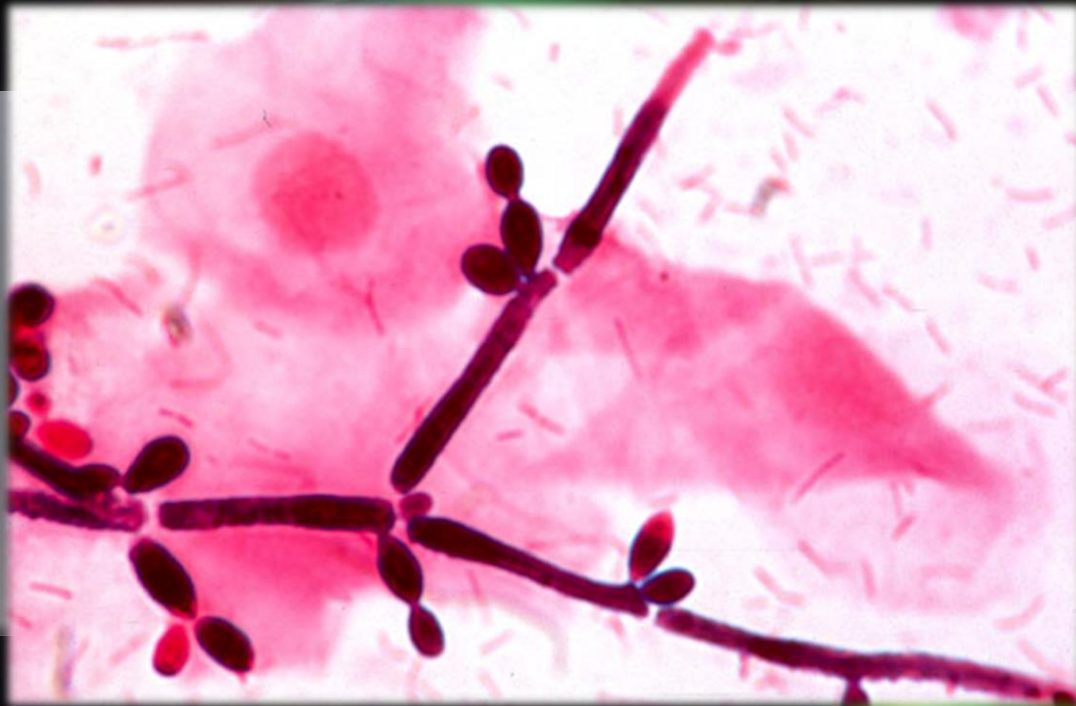
Arthur Schopenhauer



All truth passes through three stages:

- First, it is **ridiculed**
- Second, it is violently **opposed**; and
- Third, it is **accepted** as self-evident

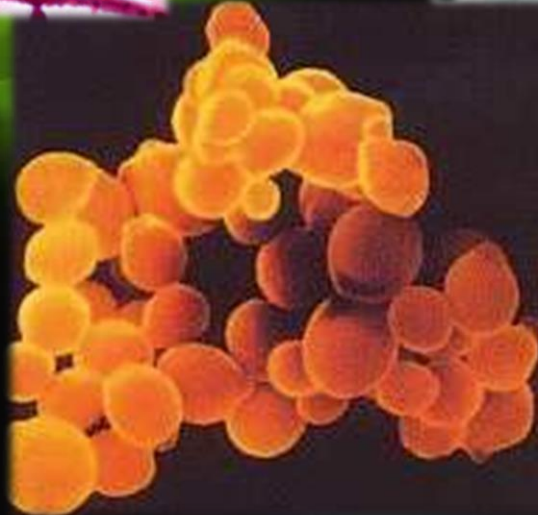
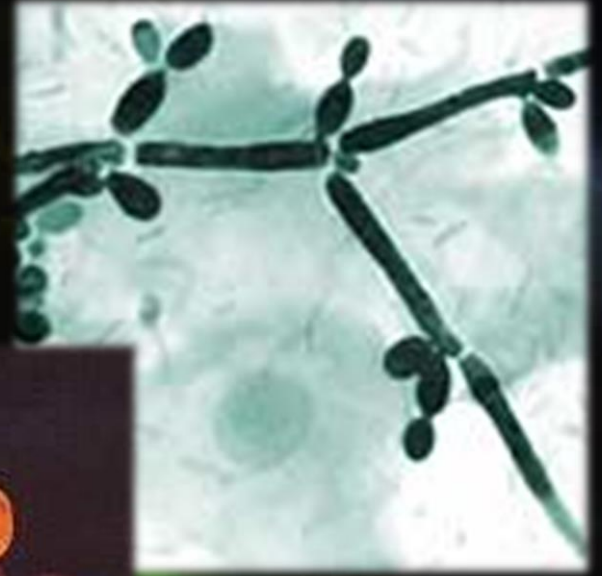
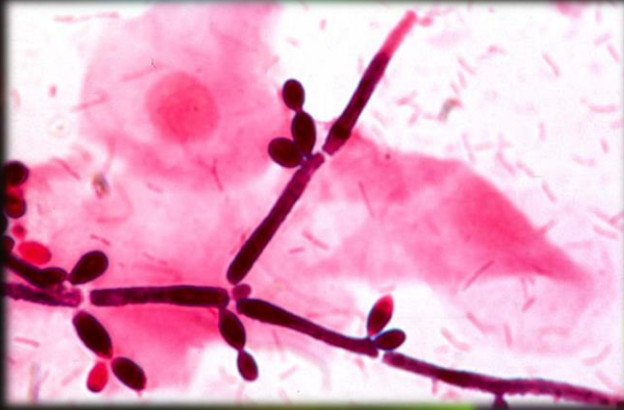
Arthur Schopenhauer
1788-1860



CANDIDA

Pulsed Technologies

Candida



Candida

“The traditional medical establishment refuses to accept for reasons unknown to me the existence and importance of chronic candidiasis. Doctors recognize the normal presence of yeast in the gut, as well as severe, systemic Candida yeast overgrowth in immunocompromised patients, but most are unable to accept the full spectrum of candida yeast overgrowth in between these clinical end points”

From THE ROAD TO IMMUNITY
by Kenneth Bock, M.D. and Nellie Sabin

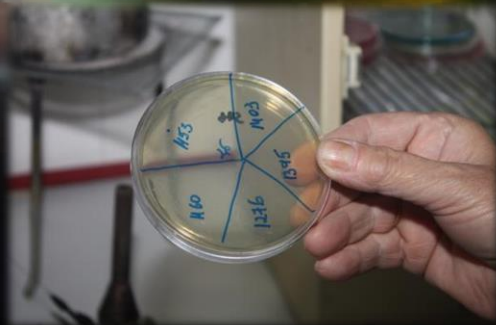
Candida Symptoms

Candida presents itself differently in every body. You may have just one, two or many of these yeast infection symptoms! It's confusing too, as these can be symptoms of other illnesses as well. Welcome to the world of Candida where patients have to diagnose themselves unless they are lucky enough to find a medical doctor or alternative practitioner who has the knowledge to guide you through a major Candida removal!

- Do you experience fatigue, “foggy” thinking, indolence, lack of recall?
- Do you crave sugar, have a bloated abdomen or abdominal pain?
- Do you have “intimate” infections or rashes – to the point where they are interfering with your love life?
- Do you have a white coating on your tongue, or have itchy rashes?
- Have you been sent home time and again by doctors who say “nothing is wrong” with you – when something obviously is?
- Do you feel 20 to 30 years older than you really are?

Frequency Validation

- Expensive/meticulous biological testing and validation is necessary to properly identify and devise an effective protocol
- This work IS “quietly” being carried out using the very same equipment currently available



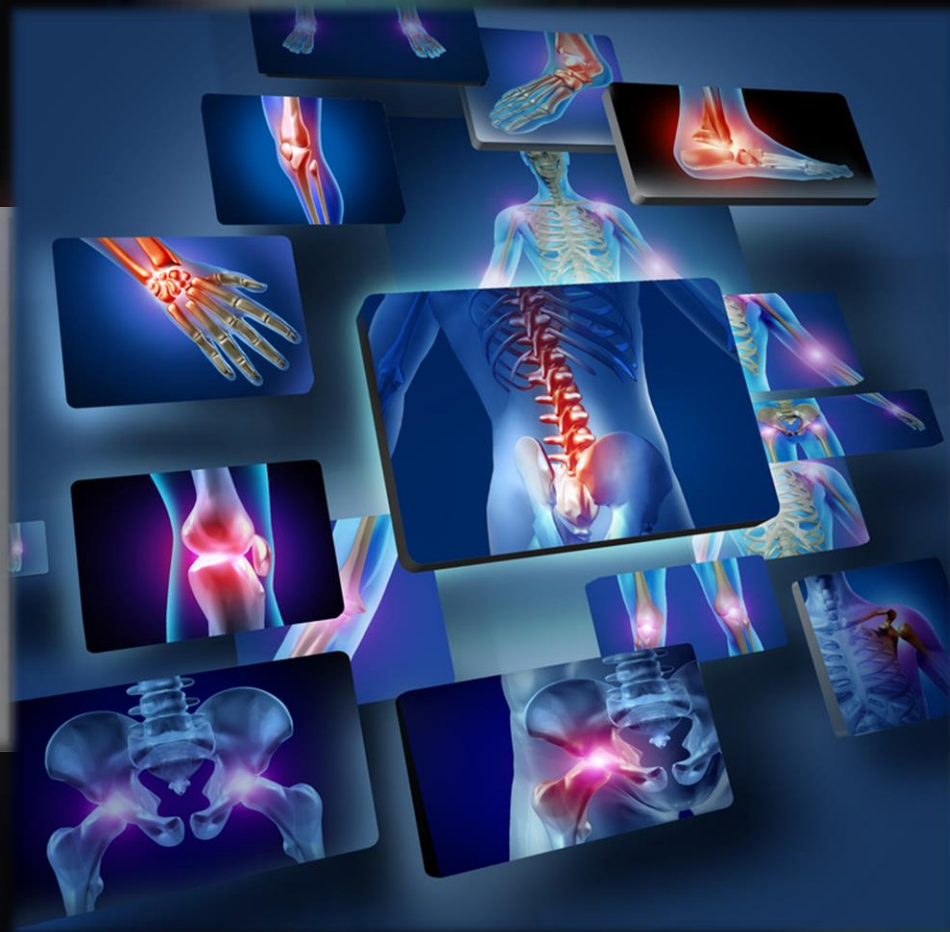
- **NO !!! ...**
ALL equipment does NOT work equally well and much on the market is worthless or even counter-productive for this intended use.



Candida Protocol Development



- The Pulsed Technologies team has been tireless in development of sophisticated and effective protocols badly needed in today's environment
- The information is typically shared via practitioners and serious researchers so as to more appropriately recognize and monitor the desired changes which occur
- Areas of current/immediate investigation are LYME, CANCER, and TOXIC MOLD



ARTHRITIS

Pulsed Technologies

Arthritis Symptoms

Conventional diagnosis and treatment revolves around the symptoms rather than underlying cause

- Osteo Arthritis – Pain/Inflammation **PAINKILLERS/STEROIDS**
- Rheumatoid Arthritis – Pain/Inflammation **PAINKILLERS/STEROIDS**
- Allergic Arthritis – Food/Exposure **PAINKILLERS/STEROIDS/ANTI HISTAMINES**

This model sets up a perpetual degeneration because the

... CAUSE is Not addressed?



Biological Causes



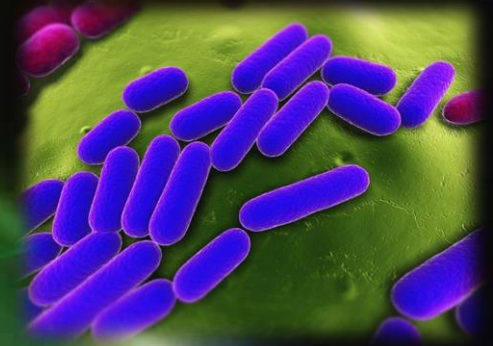
- Osteo Arthritis – Bacterial Cause
- Rheumatoid Arthritis – Parasitic Cause
- Allergic Arthritis – Food/Exposure

TARGETABLE

TARGETABLE

MODIFYABLE

- **IS IT POSSIBLE THESE ARE
RELATED CO-INFECTIONS /
CO-SYMPTOMS OF LYME**



..... IS THERE A RELATIONSHIP ?



Biological Causes

- Consider the BIOLOGICAL / Bacterial CAUSES of the “degenerative symptoms” associated with Arthritis

- Osteo Arthritis – Bacterial Cause **TARGETABLE**
- Rheumatoid Arthritis – Parasitic Cause **TARGETABLE**
- Allergic Arthritis – Food/Exposure **MODIFYABLE**
- IS IT POSSIBLE THESE ARE RELATED CO-INFECTIONS / CO-SYMPTOMS OF LYME

..... IS THERE A RELATIONSHIP ?

Arthritis Protocol



Electronics

- **Target** Bacterial/Parasitic Cause(s)
- **Enhance** supplement delivery and uptake
- **Assist** in powering metabolic reconstruction



Arthritis Supplementation



A “symbiotic” supplementation regimen for enhanced electronic delivery, uptake and utilization is required for optimal remediation and REPAIR of damage already done

- Glucosamine
- Chondroitin
- MSM
- Omega-3 Fatty Acids
- Vitamins C, D, & E



Diet

It is important to focus on
NON-INFLAMMATORY foods

- Gluten Free
- Dairy Free
- Fresh Vegetables



- Osteo Arthritis – Bacterial Cause
- Rheumatoid Arthritis – Parasitic Cause





Behçet's

Pulsed Technologies

Behçet's Facts

- Exact cause of Behcet's Disease is **UNKNOWN**
- Disease is **NOT contagious**
- Doctors **THINK** that an autoimmune reaction causes blood vessels to become inflamed
- Trigger is **UNKNOWN**
- Behcet's Disease is **common** in the Middle East, Asia, and Japan
- It is **rare** in the United States
- In Middle Eastern and Asian countries, the disease affects **more men than women**
- In the United States, it affects **more women than men**

Behçet's Symptoms

Most Common Symptoms

- Mouth Sores
- Genital Sores
- Other Skin Sores
- Swelling of Parts of the Eyes
- Arthritis (pain, swelling, & stiffness in joints)



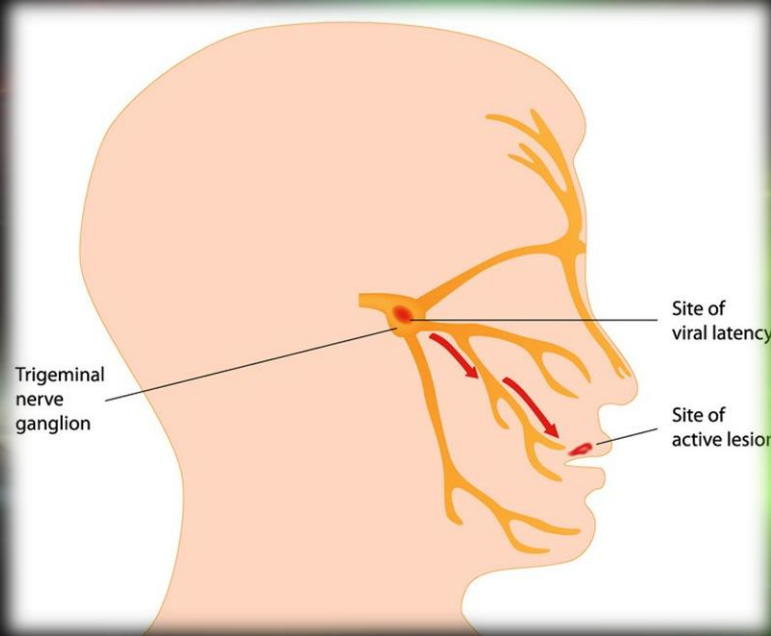
<http://www.behcets.com/site/pp.asp?c=bhJJSOCJrH&b=260548>

Less Common Symptoms

- Inflammation in the Brain and Spinal Cord
- Blood Clots
- Inflammation in Digestive System
- Blindness

- **Symptoms may APPEAR, DISAPPEAR and later REAPPEAR**

Behçet's Disease



- PulsedTech is aware of numerous specific pathogen related, usually present and are likely the **UNDERLYING TRIGGERS**
- The PulsedTech proprietary protocol targets these triggers

Behçet's Diet

It is important to focus on
NON-INFLAMMATORY foods

- Gluten Free
- Dairy Free
- Fresh Vegetables





SINUS

Pulsed Technologies

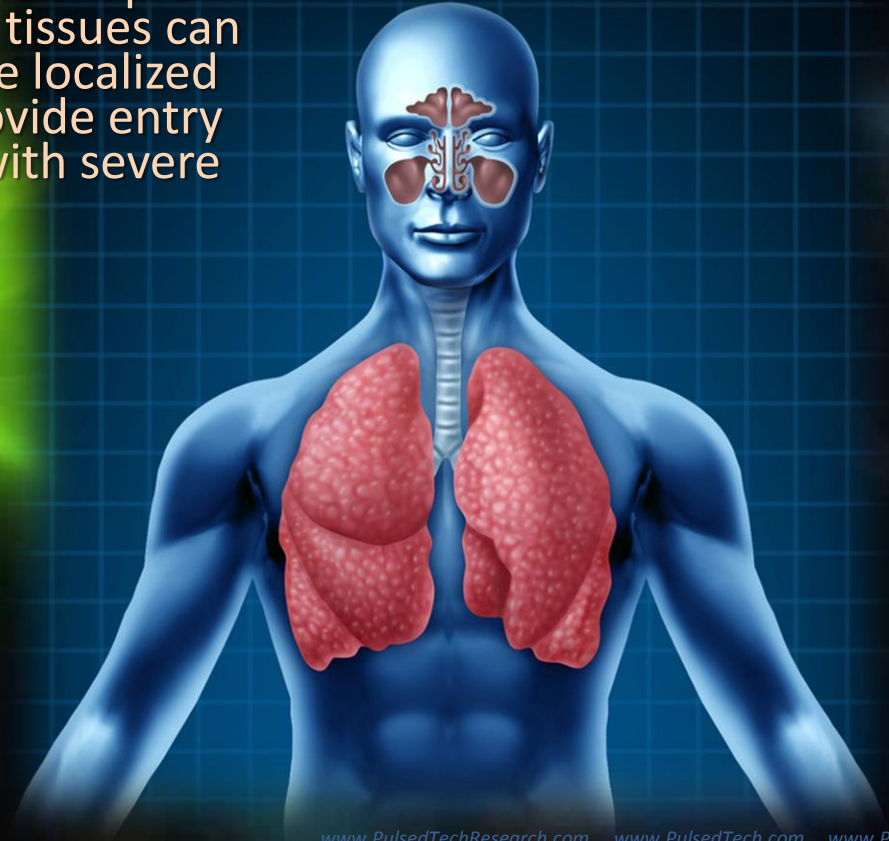
Sinus Inflammation

Irritation/Swelling can be caused by many factors:

- Allergens
- Pathogens
- Foods / Pollution

Sinus Inflammation

It is easy to understand how the simple inflammation of these sinuses tissues can cause physically uncomfortable localized symptoms as well as easily provide entry points for serious pathogens with severe complications



Sinus Inflammation

It is important to focus on
NON-INFLAMMATORY foods

- Gluten Free
- Dairy Free
- Fresh Vegetables



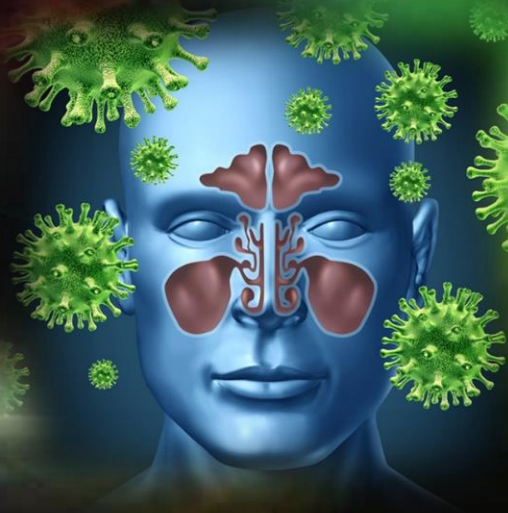
A diet which helps minimizes adverse reactions to external contaminants is extremely helpful in resolving this and related issues.

A man with dark hair and green eyes is wearing a dark blue hoodie. He is holding a white tissue to his nose and drinking from a blue and white striped mug. The background is dark with some green and blue light effects.

COLD / FLU

Pulsed Technologies

Sinus Inflammation



Sinus Irritation/Swelling
result from histamine
reaction to viral pathogen

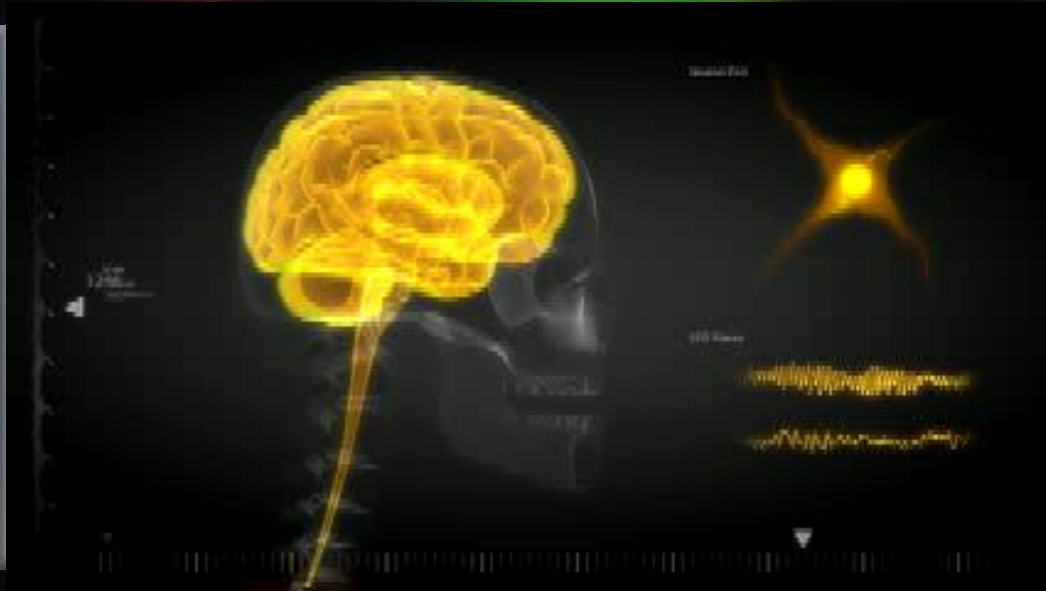
Sinus Inflammation

It is important to focus on
NON-INFLAMMATORY foods

- Vitamin C
- Dairy Free
- Fresh Vegetables



A diet which helps minimizes adverse reactions to external contaminants is extremely helpful in resolving this and related issues.



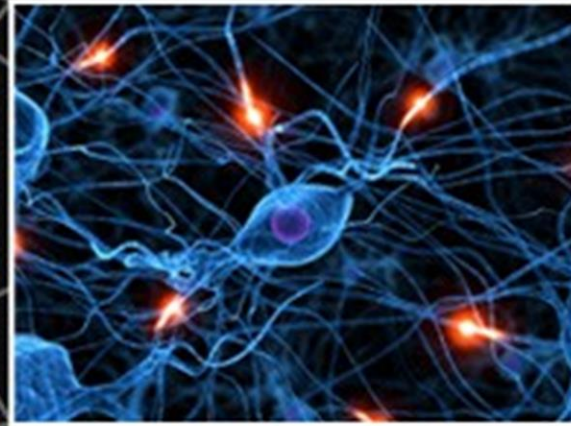
MULTIPLE SCLEROSIS

Pulsed Technologies

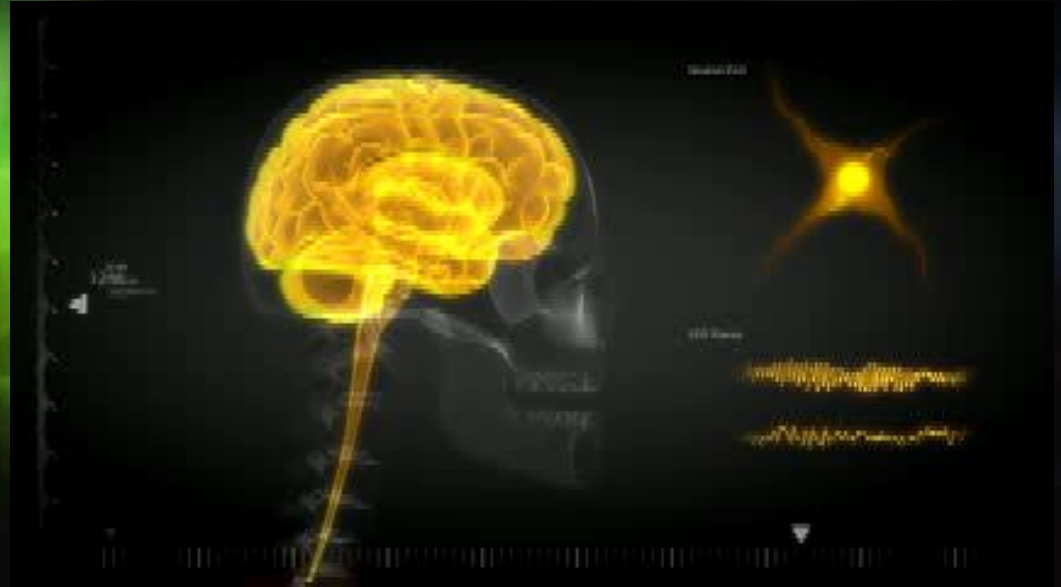
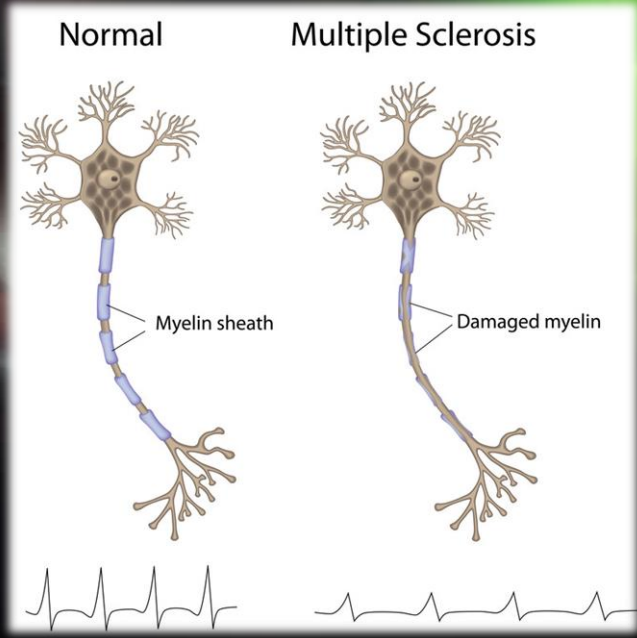
MS – Conventional Thought



Multiple Sclerosis:
Autoimmune disease of the central
nervous system (brain & spinal cord)



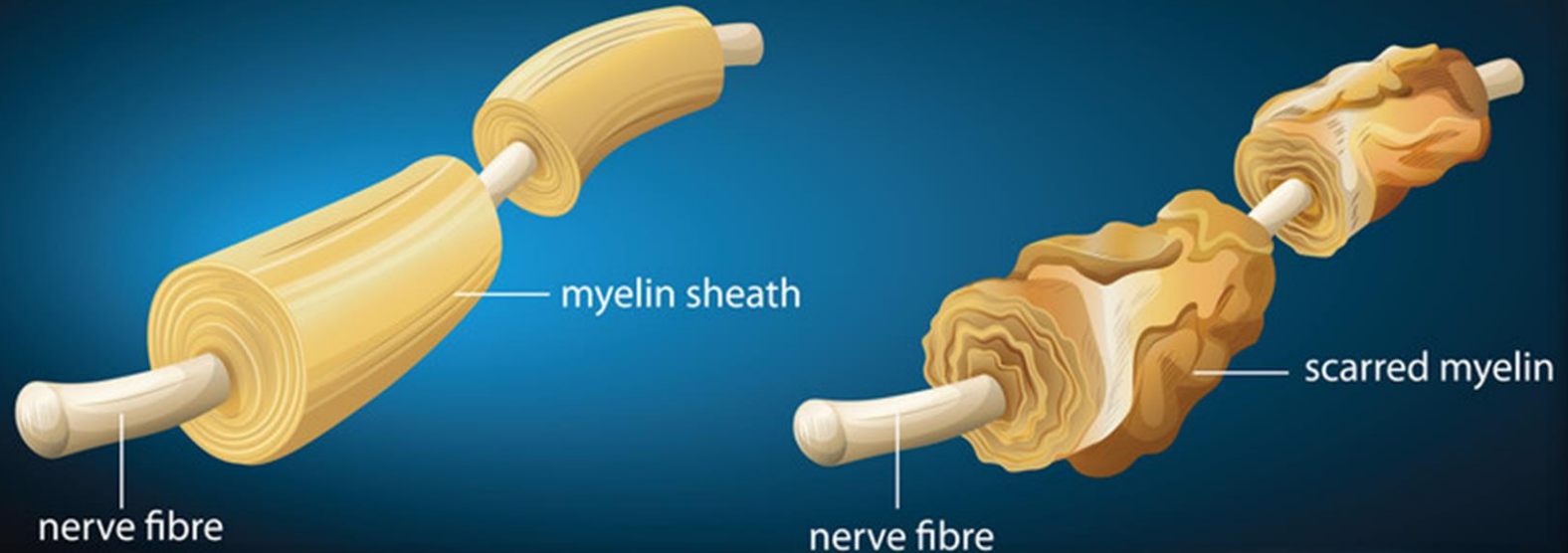
MS – Conventional Thought



MS – Conventional Thought

- Consider

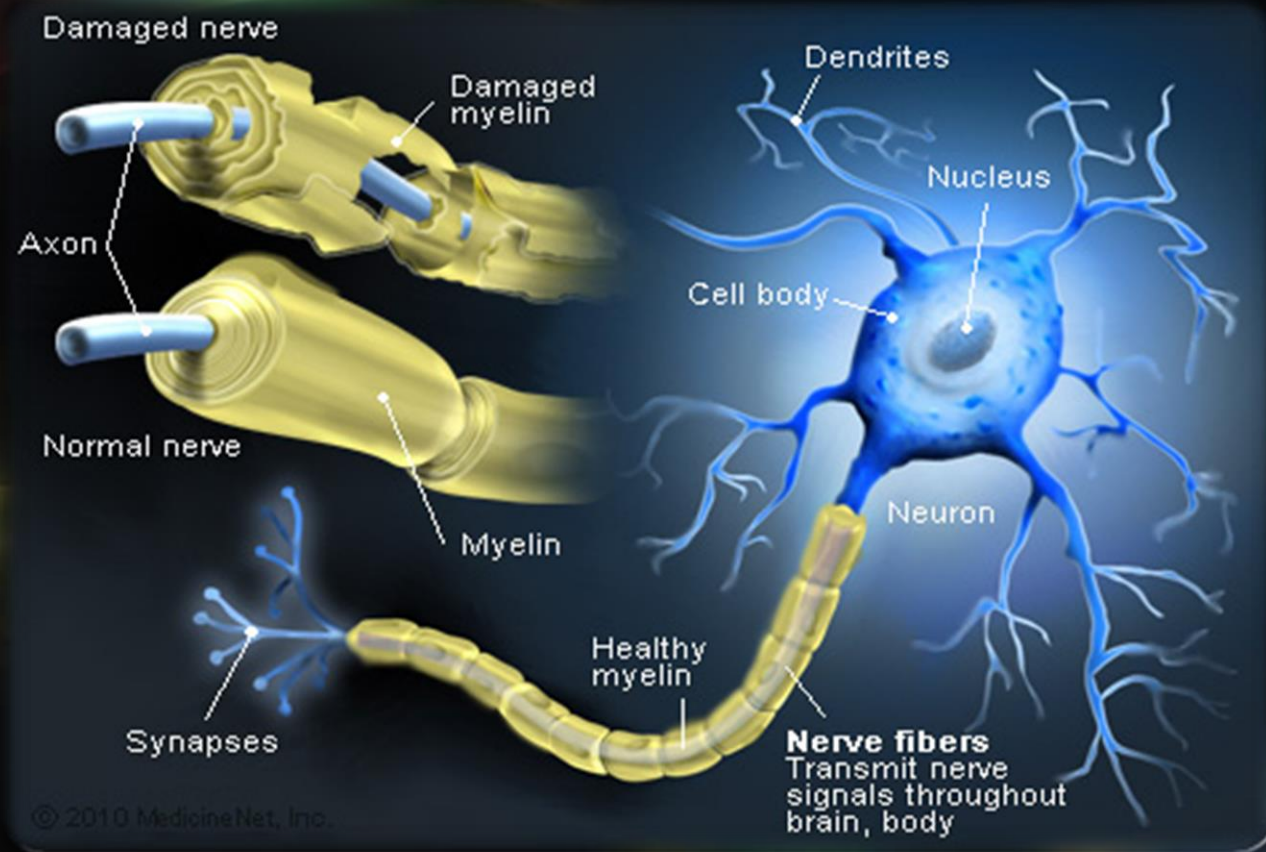
Multiple Sclerosis - Demyelination



MS – Conventional Thought

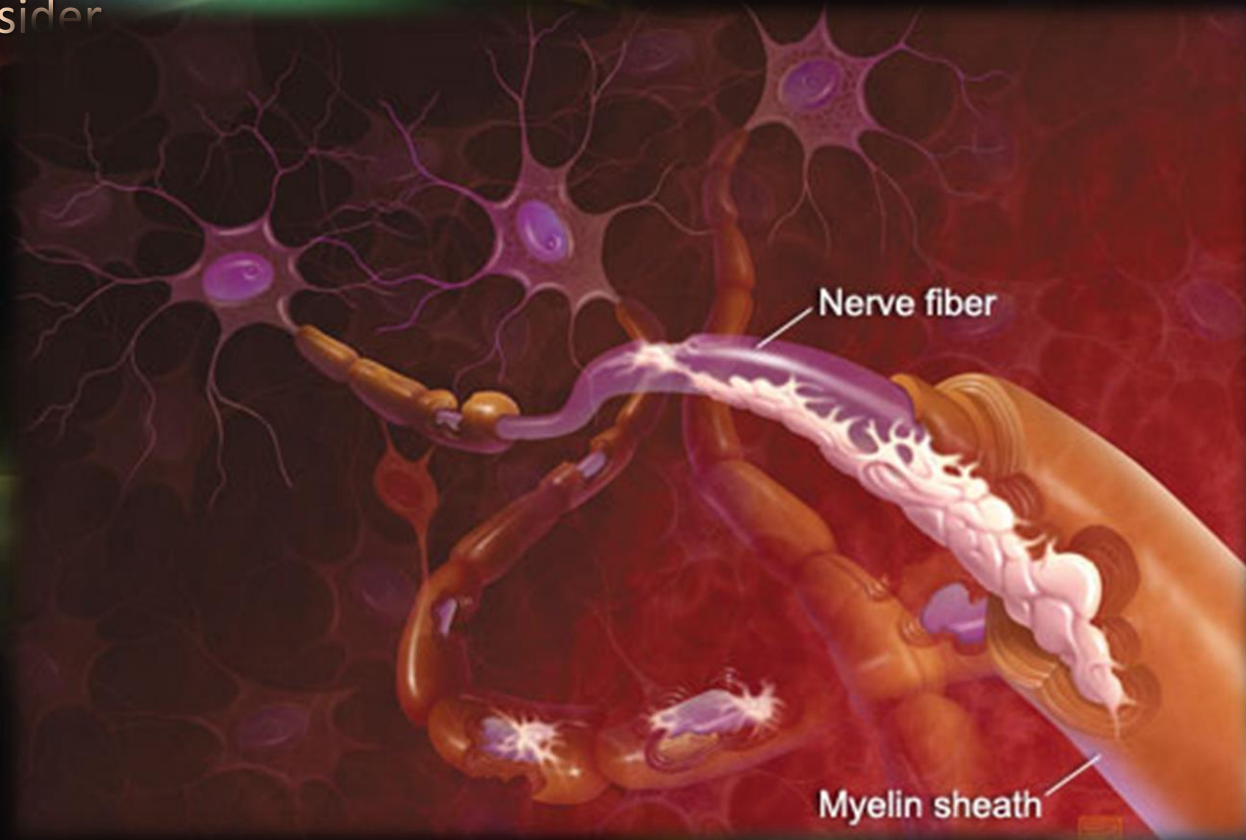


MS – Conventional Thought



MS – Conventional Thought

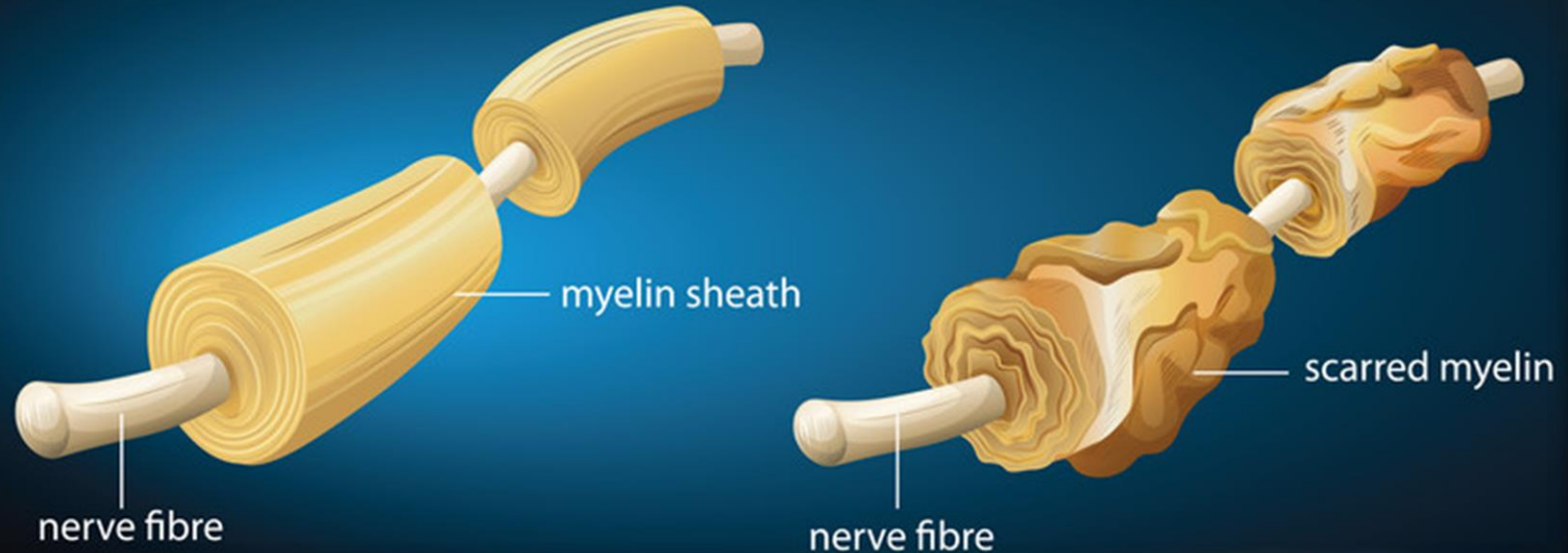
- Consider



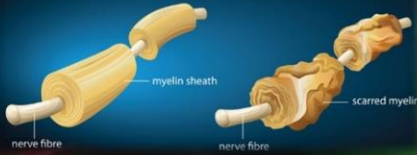
MS – Conventional Thought

- Consider

Multiple Sclerosis - Demyelination



Multiple Sclerosis - Demyelination

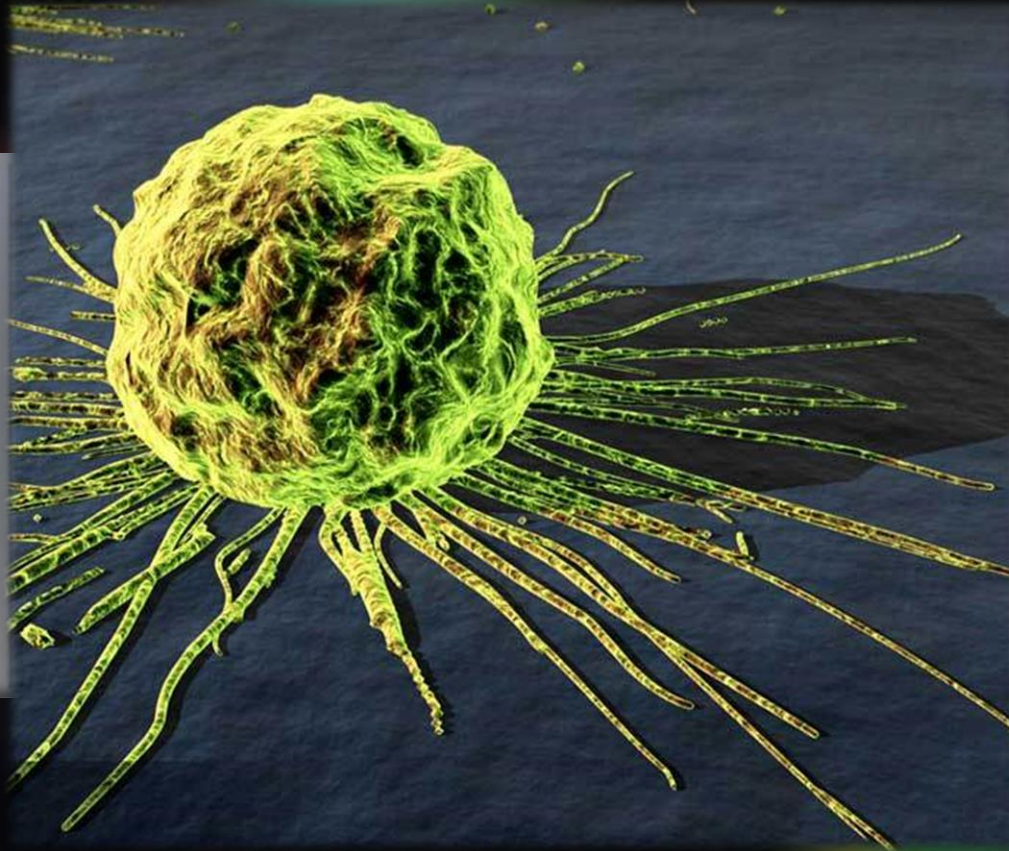


MS Supplementation

A “symbiotic” supplementation regimen for enhanced electronic delivery, uptake and utilization is required for optimal remediation and REPAIR of damage already done

- Fatty Acids
- Antioxidants
- Biotin
- Vitamin D3
- 2-AEP Potassium
- Magnesium Orotate
- Calcium Orotate
- Zinc
- Lipothiamine





CANCER

Pulsed Technologies

Targeting

CANCER

Targeting Cancer in multiple ways:

- Frequency – Targeted Destruction
- Energy Level/Voltage – Enhance Metabolism
- pH – Environment
- Diet – Starve the Cancer – Feed the (healthy) Cells



Cancer Scenario

- Before Exposure



- 24 hrs After Exposure



- After 2nd Exposure
24 hrs Later

Cancer (before exposure)



Cancer (24 hrs after exposure)

Cancer (24 hrs after 2nd exposure)

- Basalioma (thigh, age 50)
- Nine 5 minute treatments over 6 weeks



- Traditional Surgical treatment scar -----



Supraclavicular Metastasis of a Malignant Teratoma on the Neck

- Before first of 5 treatments



- At 3rd treatment

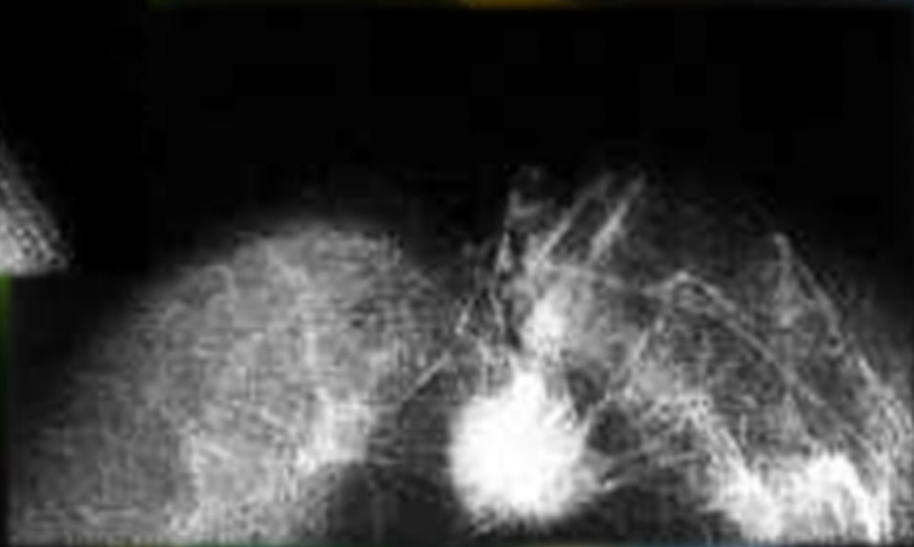


- Patient is without symptoms after 5 treatments



Carcinoma, Breast

- Tumor Diameter – 3.6 cm



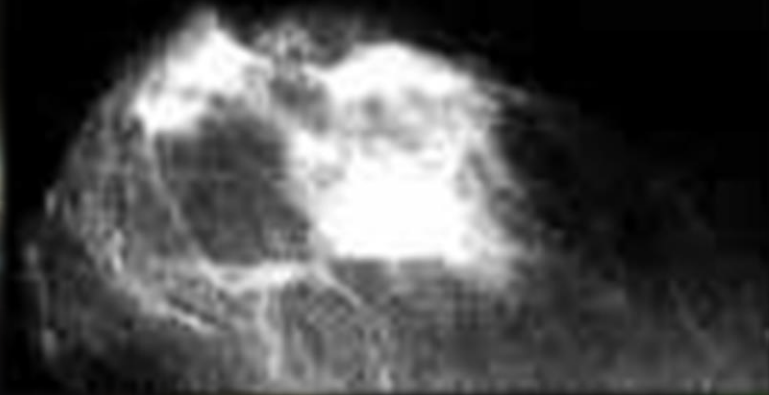
Carcinoma, Breast

- Szirrhotic Carcinoma of the Breast

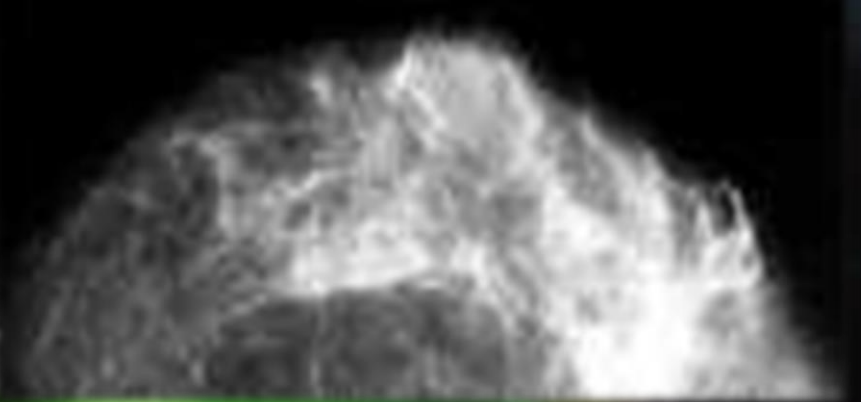
- Complete Healing after One Year

Szirrhotic Breast Cancer

- Before



- After



- In addition to the size reduction, a normalization of all tumor parameters occurs

Nutrition / Diet / Supplementation

- Diet is terribly important to begin getting back control
- Alkalizing Foods to change “environment”
- Fresh vegetables, natural fruit sugars.

- ***ABSOLUTELY NO PROCESSED SUGARS!***



[illegible]

DIABETES

Pulsed Technologies

Risks & Complications

Diabetes Risk Factors

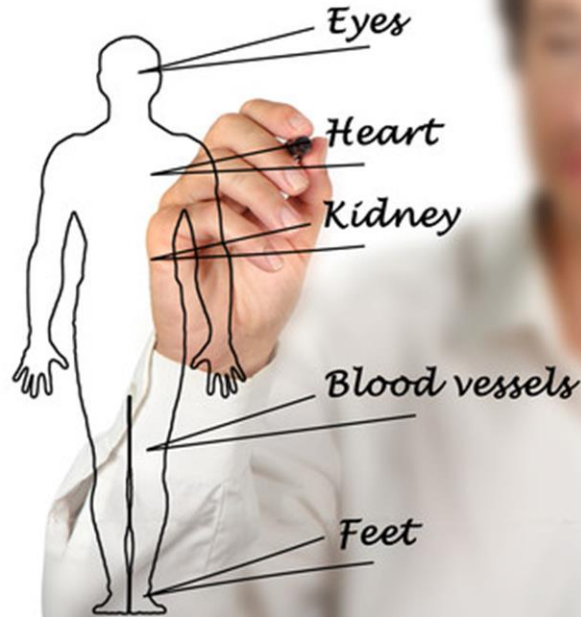
Overweight →

High blood pressure →

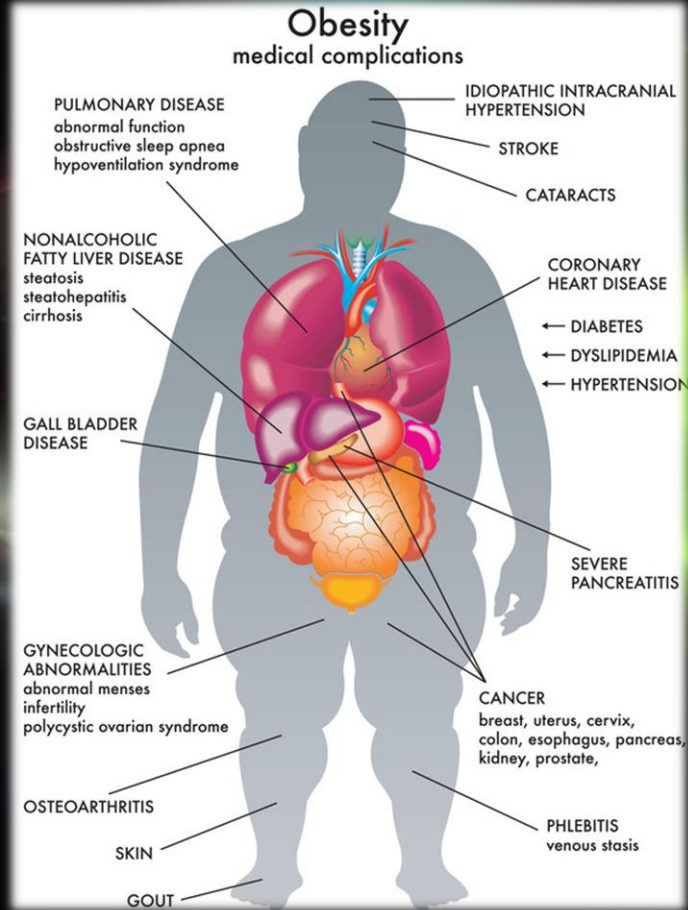
High level of cholesterol →

Genetics/
Family history ↗

Diabetes Complications



Obesity Complications



- The Pulsed Technologies team has been tireless in development of sophisticated

• Sfggfgw

IN WORK

Insulin & Sugar

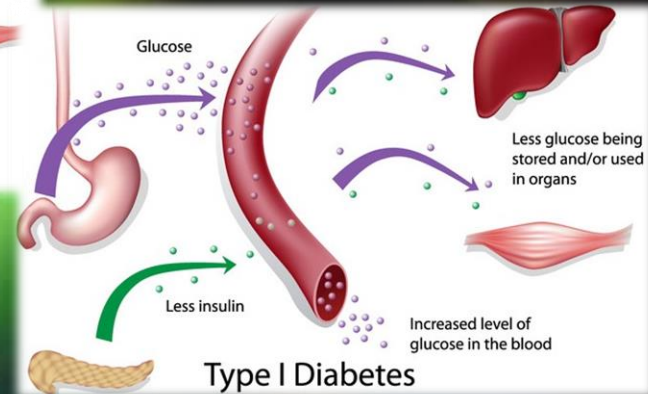
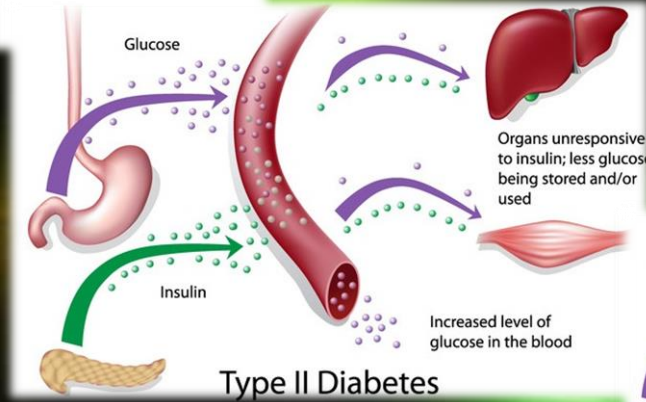
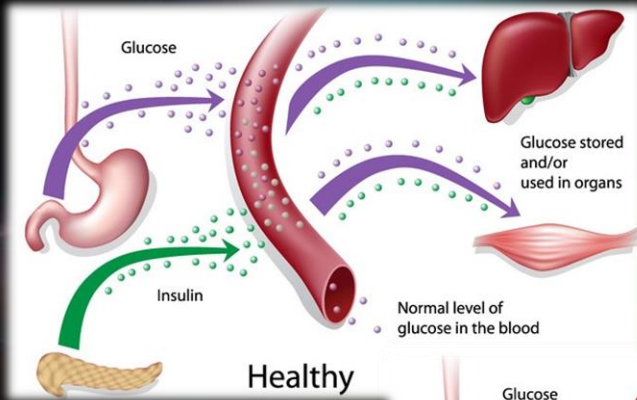


- The Pulsed Technologies team has been tireless in development of sophisticated
- IN WORK

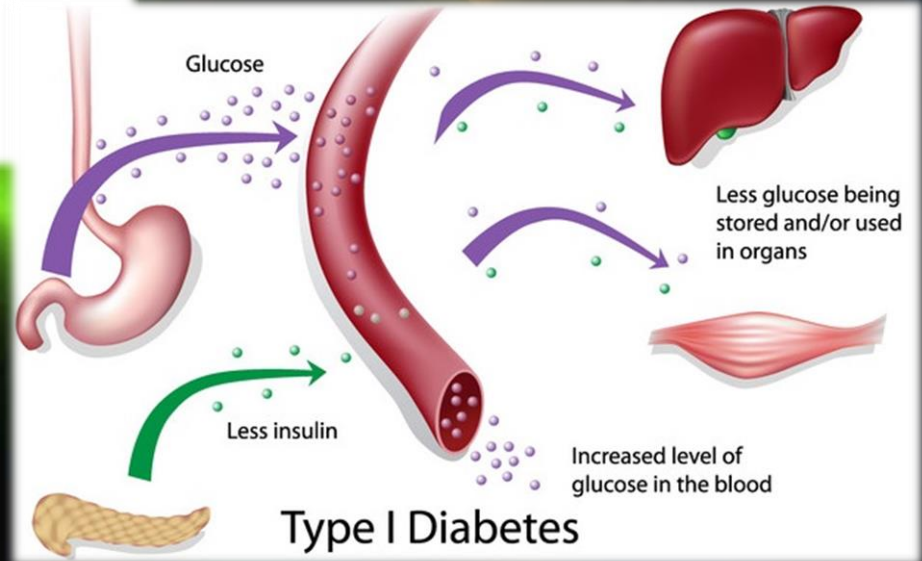
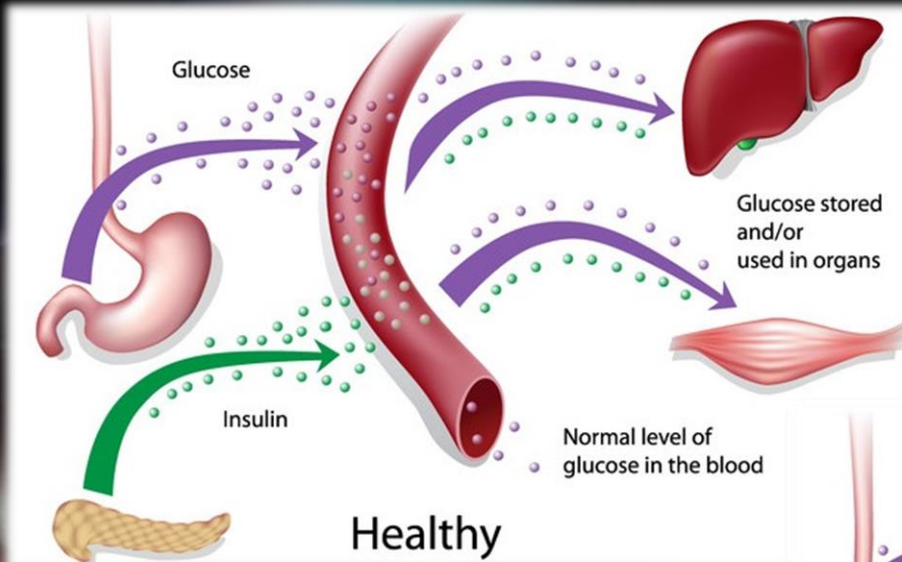


Diabetic Dysfunction

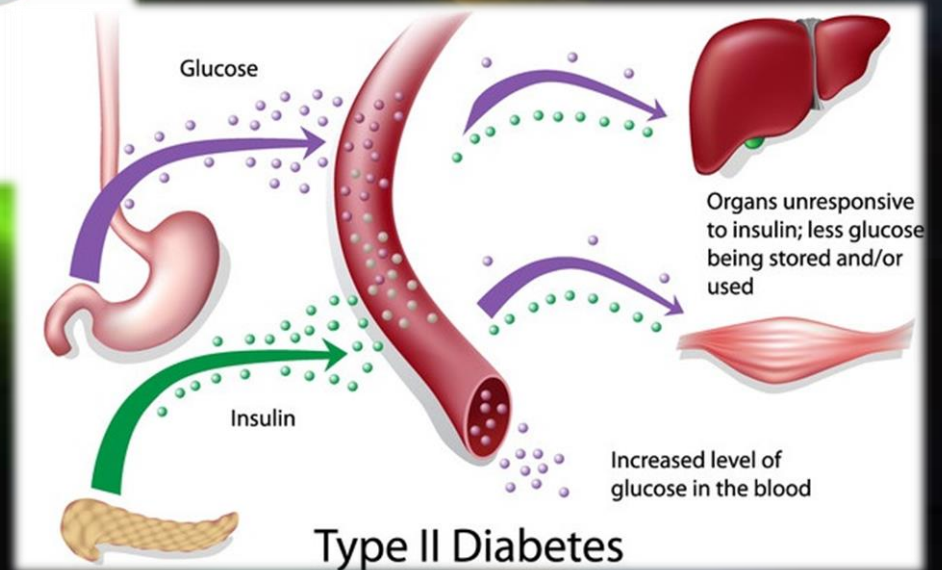
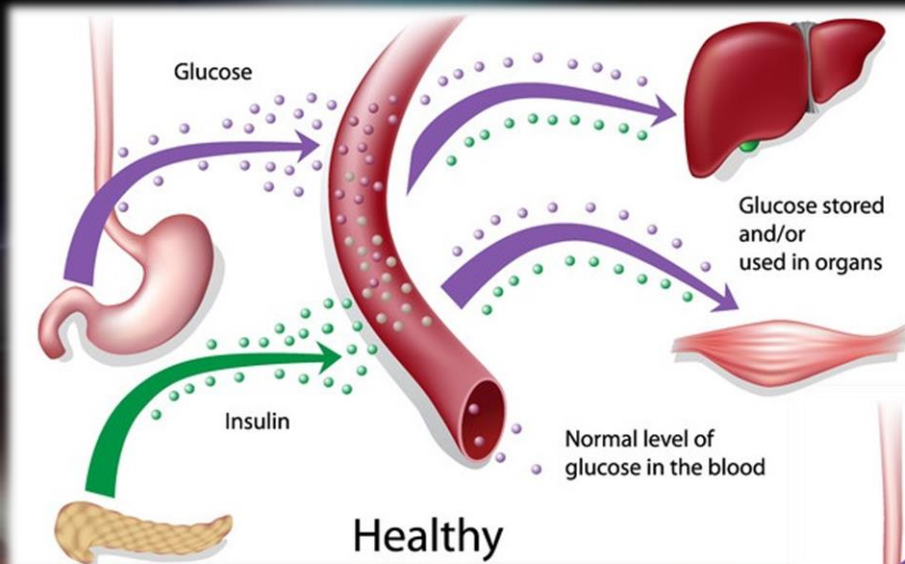
- The Pulsed Technologies



Type 1 Diabetes



Type 2 Diabetes



Obesity Exercise

- The Pulsed Technologies team has been tireless in development of sophisticated
- Sfggfgw



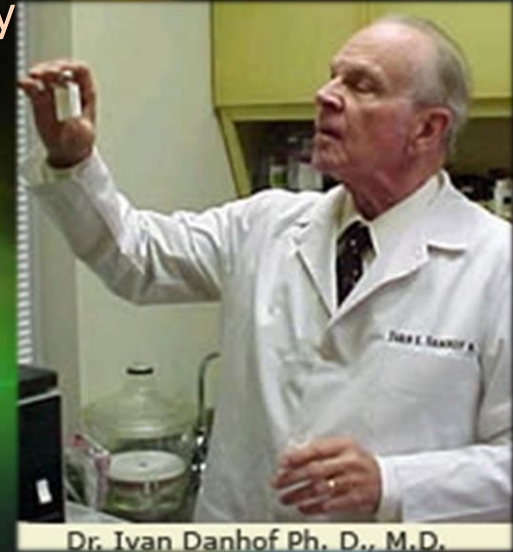
Diabetes Diet

- Diet is terribly important to begin getting back control
- Fresh vegetables, natural fruit sugars.
- **ABSOLUTELY NO ARTIFICIAL SWEETNERS!**



Diabetes Protocol

- The Pulsed Technologies team has been working with Dr. Ivan Danhof, the manufacturer of an amazing Aloe Extract which offers some pretty amazing properties to help soothe and repair affected tissue and to ideally help clean insulin receptor sites so that the body can more efficiently process sugars in a natural manner.



Aloe Vera Supplementation

- Aloe extracts can help provide the needed internal cleansing and repair of insulin receptors



- Topical external application can accelerate wound healing typically associated with Diabetic and circulatory issues.

Milagro de la Selva



Dr. Alberto Ruiz

Rainforest Medical-Botanical Researcher

Dr. Alberto Ruiz's unique combination of natural rainforest plant ingredients used by the ancient Mayans to virtually eliminate any diabetic issues

- Available as single Tea (bags)
- Now as tea concentrates (drops)



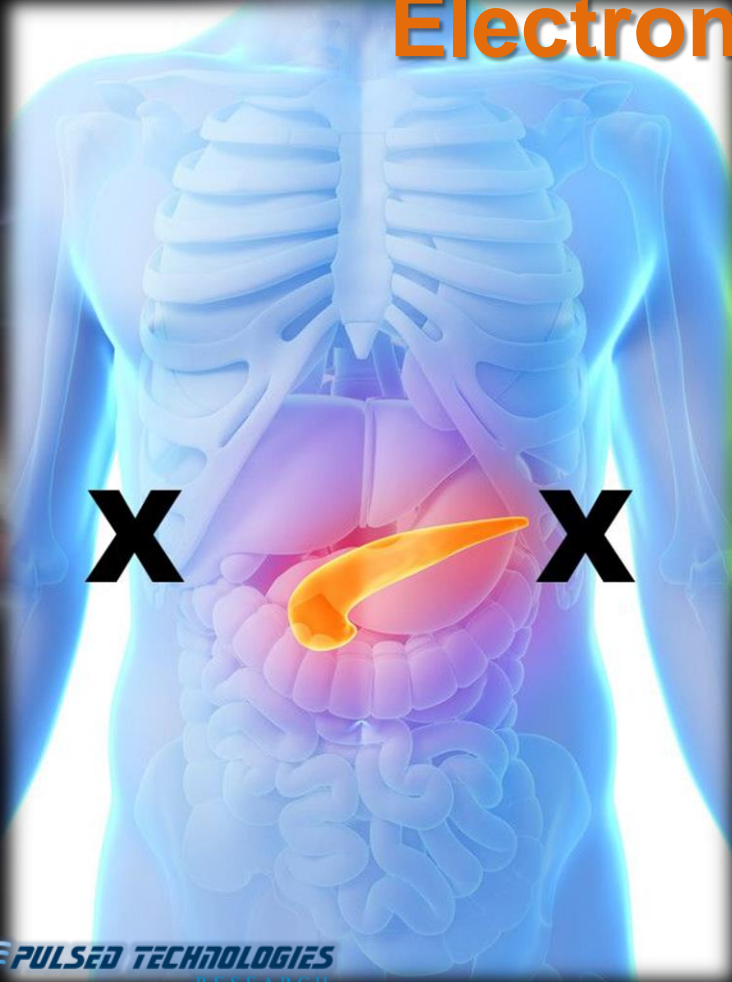
Electronic Protocol Application

- Diabetes Type 1 PT2014 Preliminary Proprietary
- Diabetes Type II PT2014 Preliminary Proprietary
- Multiple Sclerosis III, Mercury & Detox PT2014
- Support HF

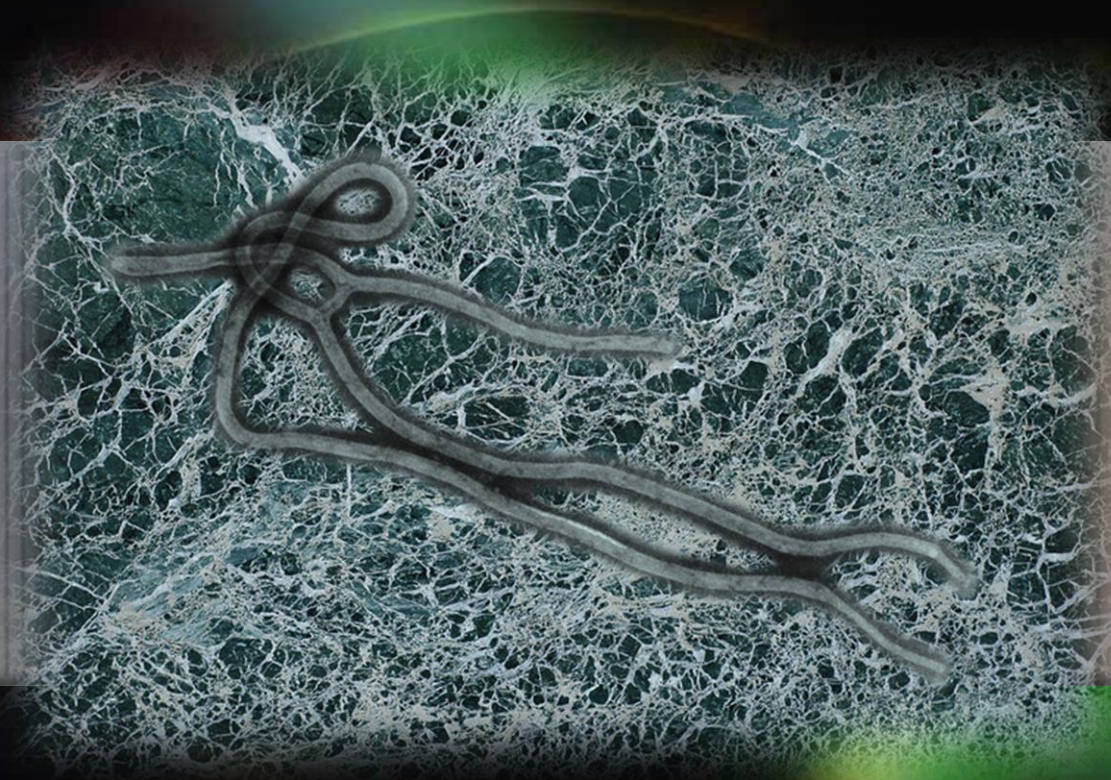
(also available through H.E.R. Technologies)



Electronic Protocol Application



- Strategic electrode placement can greatly enhance effectiveness of protocol application



EBOLA

Pulsed Technologies

Ebola & Lassa Virus

- It is important to consider the potential this was an intentionally created biological warfare product and that one consider other closely related viruses in any comprehensive treatment strategy



Ebola & Lassa Virus

- It has been the experience of PulsedTech researchers that most viruses are very fragile when it comes to frequency exposure.
- High dose Vitamin C, Vitamin D3, and Selenium is believed to be very effective in boosting the immune system and providing an effective attack on these viruses.



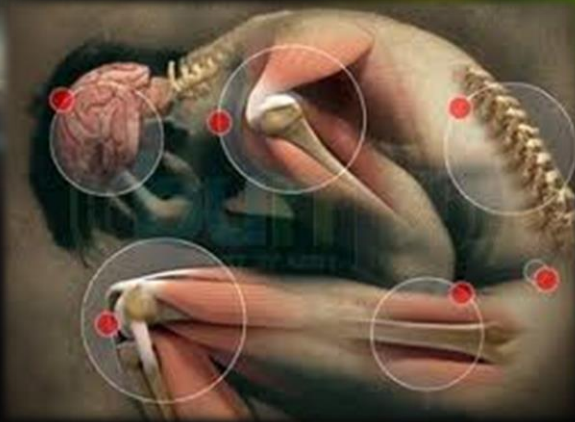
LYME

Pulsed Technologies

Problems / Symptoms

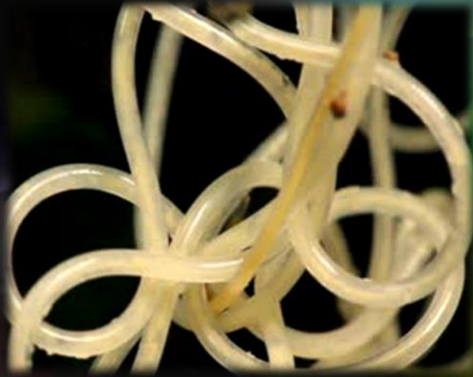
The PROBLEMS initiated by the Lyme spirochete are many:

- The symptoms created by Lyme can masquerade as **MANY** other diseases which may likely be treated conventionally ...
UNSUCCESSFULLY



- This gives the **pathogens AND co-infections** the time and opportunity to embed themselves in localized and relatively “protected” areas.
- An **integrative & strategic approach** **MUST** be taken for successful results

Additional Biological Issues



- Osteo Arthritis – Bacterial Cause
- Rheumatoid Arthritis – Parasitic Cause
- Allergic Arthritis – Food/Exposure

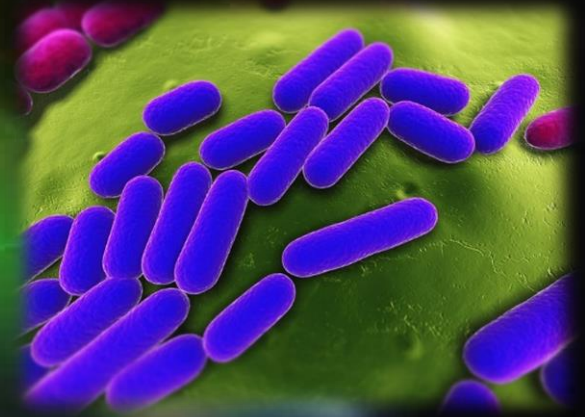
TARGETABLE

TARGETABLE

MODIFYABLE

- IS IT POSSIBLE THESE ARE ARTHRITIS CAUSES
ARE RELATED CO-INFECTIONS / CO-SYMPTOMS
OF LYME?

..... IS THERE A RELATIONSHIP ?



Pioneers of Bioenergetics Research

Two people who have been QUIETLY performing a massive amount of technical research regarding Lyme and other related issues:

- Jimmie Holman (Dallas, TX, USA)
- Paul Dorneanu (Eastern Europe)
- As manufacturers of specialized equipment, are NOT allowed to personally make public claims or give specific instruction when it comes to specific medically related cases
- Specialization in equipment design & waveform delivery characteristics makes certain devices **ESPECIALLY BENEFICIAL** for the “unique” uses of the “Lyme community”
- Sold only as Non-Medical technical use instruments, their equipment may be ideal for effective and serious personal Lyme research and self-application

PULSED
TECHNOLOGIES





MRSA

Pulsed Technologies

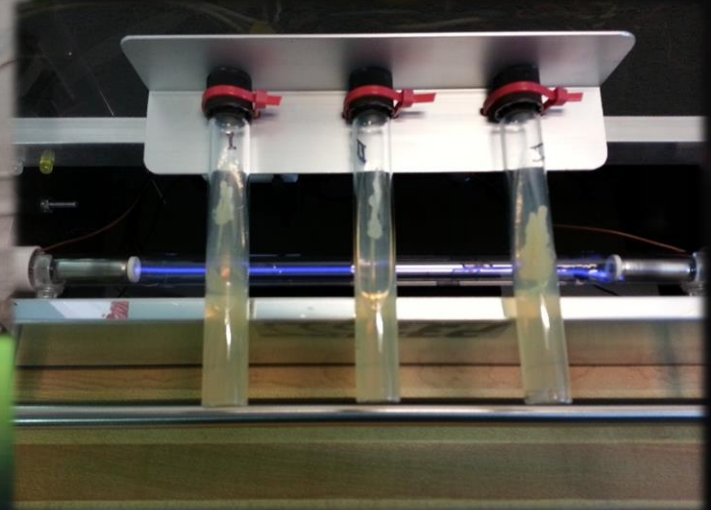
Methicillin-Resistant Staphylococcus Aureus



Methicillin-Resistant Staphylococcus Aureus

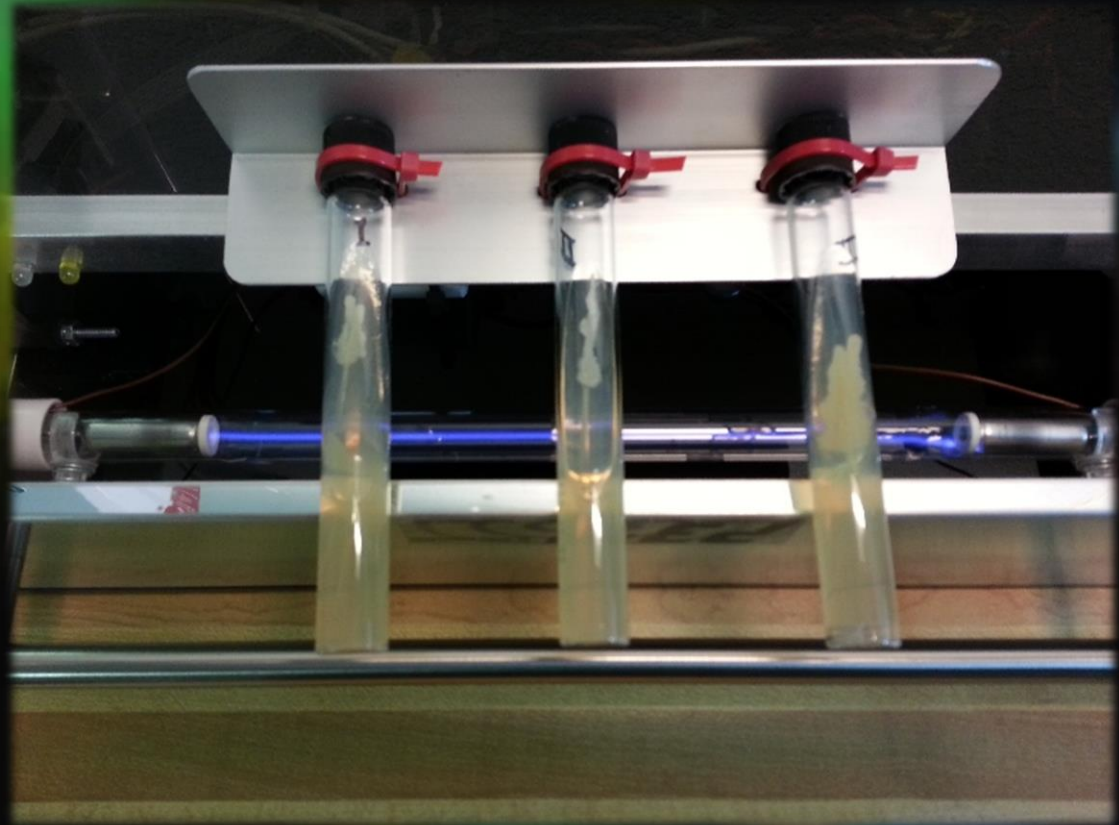


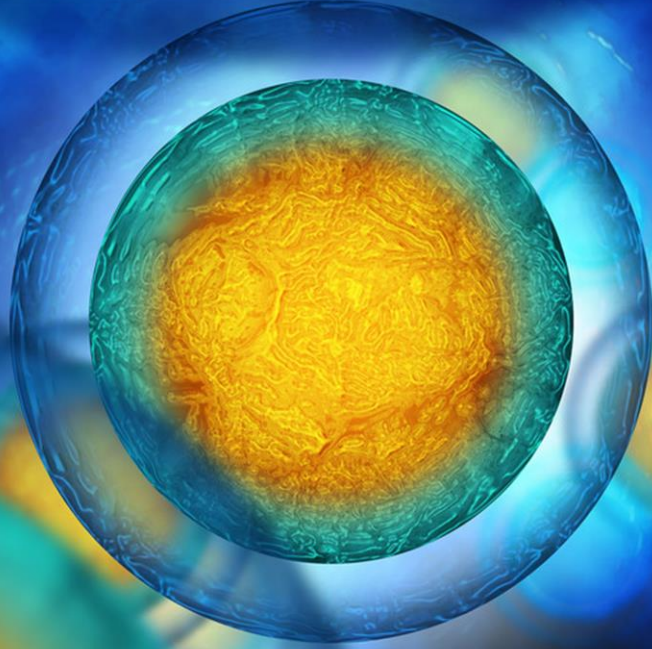
Using the **Pulsed Technologies P3pro** under strictly controlled conditions to devitalize 3 separate certified **“worst-case”** strains from independent labs.



Methicillin-Resistant Staphylococcus Aureus

Using the
**Pulsed Technologies
P3pro** under strictly
controlled conditions
to devitalize 3
separate certified
“**worst-case**” strains
from independent
labs.





FERTILITY

Pulsed Technologies

Toxic Fallout



Toxic Fallout



Toxic Fallout

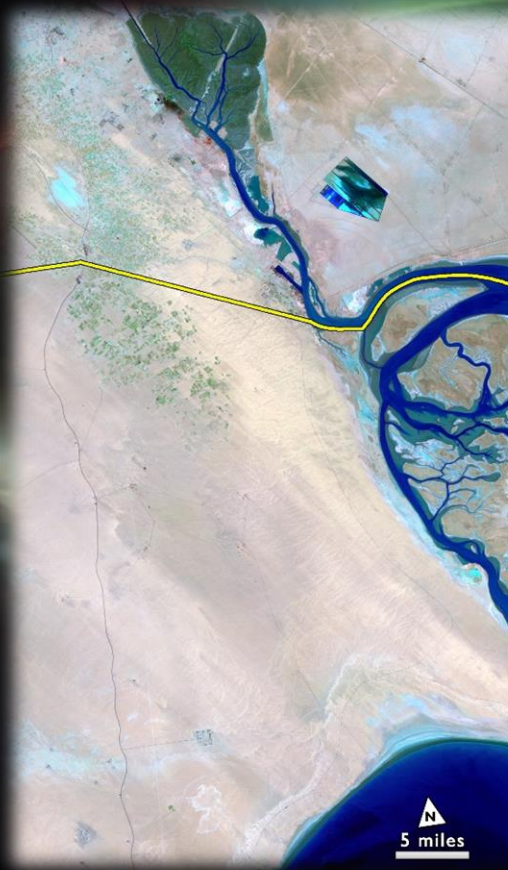


Toxic Fallout

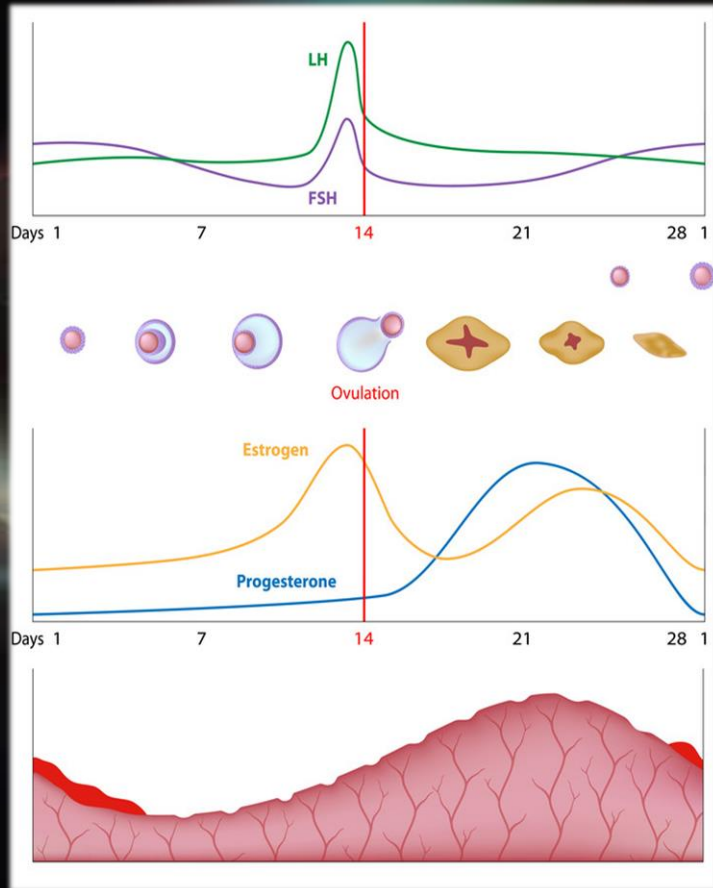
- The toxic contaminates will have environmental and life devastating effects for many generations.

- Toxic contaminants have

Toxic Fallout



Problem

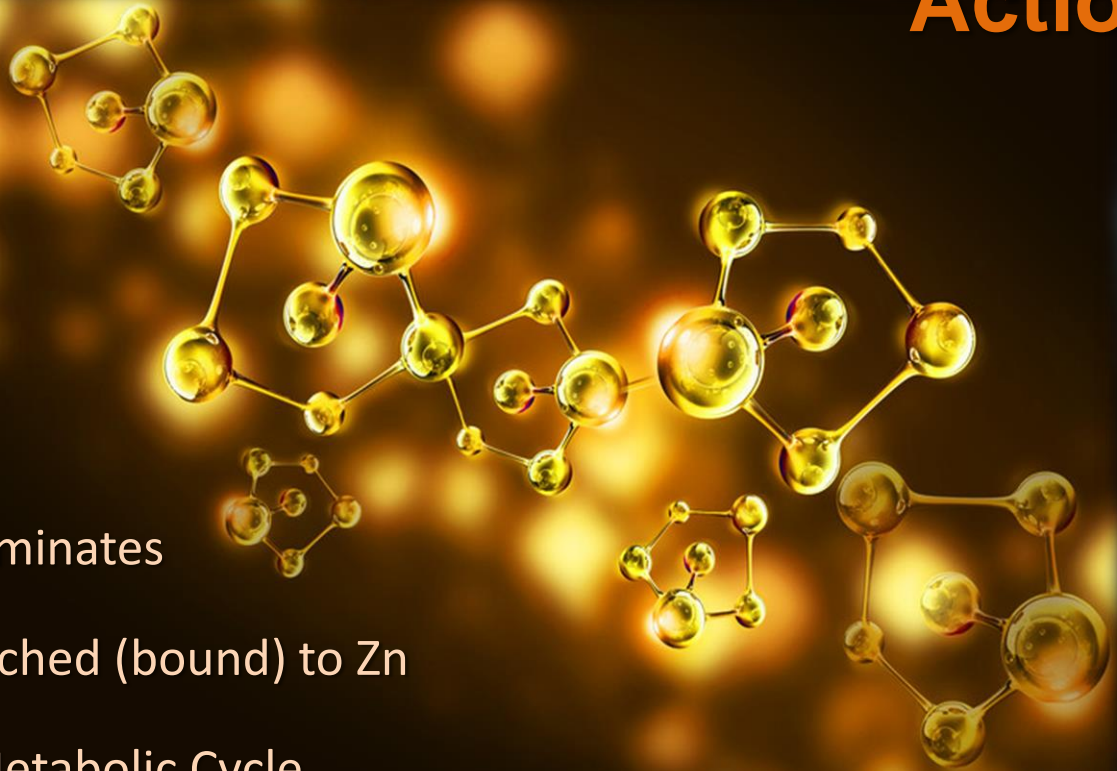


- Premature Ovarian Failure
- Follicle-Stimulating Hormone (FSH)
- Luteinizing Hormone (LH)
- Blocking Regular Metabolic Cycle
- IN WORK

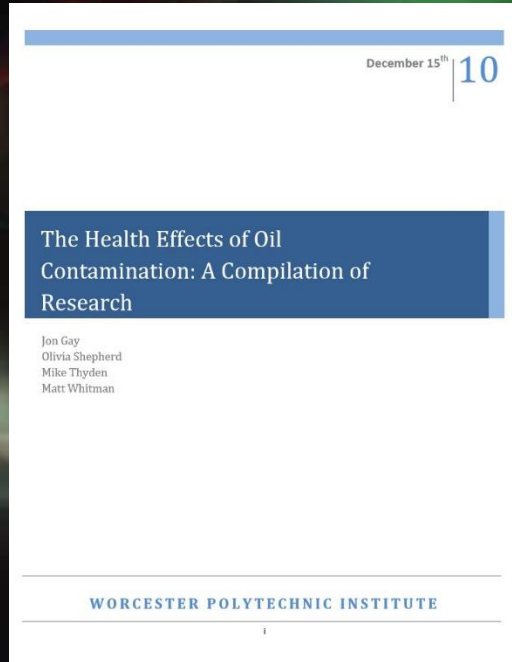
Female sexual cycle including changes in hormones, ovarian events and endometrium thickness

Action

- Trace Mineral Test
- Presence of Contaminates
- Contaminates attached (bound) to Zn
- Blocking regular Metabolic Cycle



Identification of Specific Contaminates



- Kuwait and the Mid-East have become the likely model for clear discovery of the self inflicted contamination occurring world-wide.
- Kuwait and the Mid-East and also lead the world in a viable SOLUTION to the problem.

Solution

- **RELEASE**
- **BIND**
- **ELIMINATE**
- *Energetic Restoration!*

The background of the slide is a composite image. On the left, a human skull is superimposed over a landscape. A bright blue and white lightning bolt strikes the top of the skull. In the background, several industrial smokestacks are visible, emitting thick white smoke that rises into a dark, stormy sky with swirling clouds. The overall color palette is dark, with blues, greys, and oranges.

ENVIRONMENTAL TOXICITY

Pulsed Technologies

Our Polluted Environment



Solution



- **RELEASE**
- **BIND**
- **ELIMINATE**
- *Energetic Restoration!*

Problem

- We Understand The **SOURCE** & **CAUSE** !

- Trace Mineral Test
- Presence of Contaminates
- Contaminates attached (bound) to Zn
- Blocking regular Metabolic Cycles

Testing, Study & Treatment



Prof. Sharifa Ali Al Sibiani

- Trace Mineral Test – Hair Analysis
- Identify & Remove Contaminates
- Restore Natural Metabolic Function
- --- in work ---



BRAIN



BRAIN

Pulsed Technologies

Electrical Nature

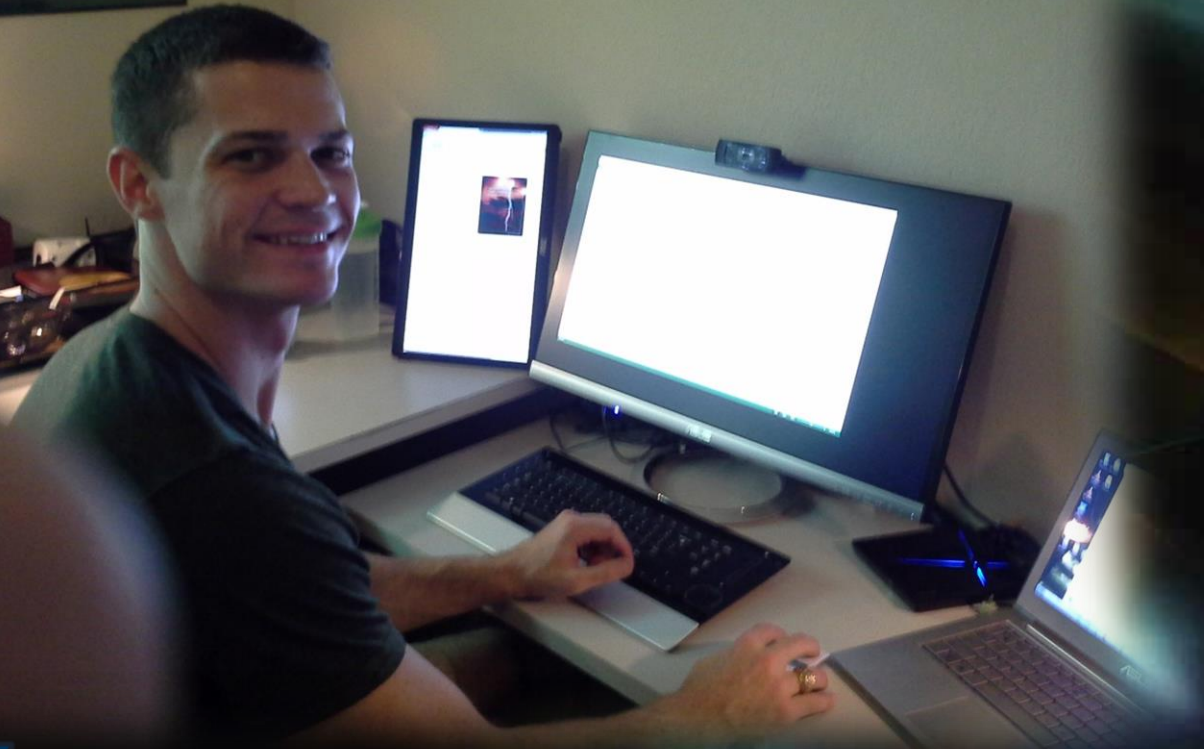


Traumatic Brain Injury



- A strategic protocol built on desperate necessity
- This effort of necessity and love carried over into fortunate successes for many others

Brain Rebuilding Success





AUTISM

Pulsed Technologies

Before



After





ALZHEIMER

Pulsed Technologies

Solution

- **RELEASE**
- **BIND**
- **ELIMINATE**
- *Energetic Restoration*
- *Rebuilding/Restructuring*



ELECTRO-POLUTION

Pulsed Technologies

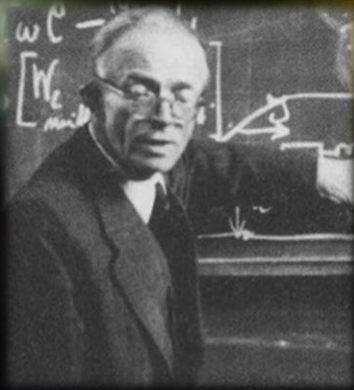
Electro-Pollution

- IN-WORK



Earth Resonance

- IN-WORK



7.83 14.3 20.8 27.3 33.8

Earth Resonance



Earth Resonance

7.83 14.3 20.8 27.3 33.8

7.8 14.1 20.3 26.4 32.5

- IN-WORK

Earth Resonance

Returning Access to the
Natural Rhythms of the World

- IN-WORK





SLEEP

Pulsed Technologies