



# **PHYSICS/ SCIENCE**

# An Introduction to PulsedTech's Bioenergetic & Bioelectric Technologies

and other Resonant Frequency Concepts



Jimmie L. Holman

Paul V. Dorneanu



## Part 2 Physics & Science

# The Science, Art & Physics

The Underlying Mechanisms

# Resonance

Harmonics & Energy Transfer



# Modis Operandi

- Destructive
- Constructive
- Supplemental
- Combinations

# Modis Operandi

- **Destructive**
- Constructive
- Supplemental
- Combinations

# Cellular Destruction 1

## Cellular Destruction 2

## Cellular Destruction 3



## Cellular Destruction 4

# Ella Fitzgerald / Memorex

APR/15/12 7:57AM L2 HQ

DVD+RW

# Transfer of Energy

- Every type of matter, molecule and cell has its own unique wave signature.



# Resonant Frequencies

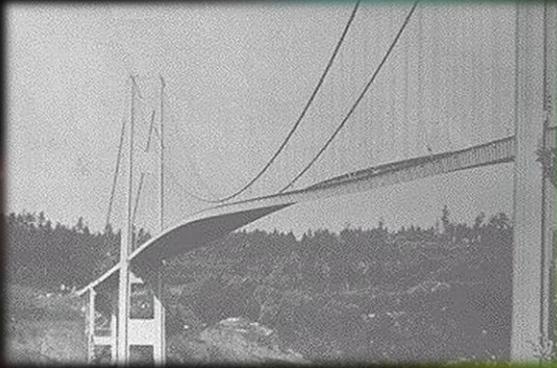
- Every type of matter, molecule and cell has its own unique wave signature.
- To resonate something you emit a wave signature which is "in sync" with the wave signature of the material you are working with.
- The application of a constant resonant frequency to a material intensifies and reinforces the standing frequency of that material.

# Resonance In Action



- “Gallop in’ Gertie” the Tacoma Narrows Bridge
- November 7, 1940
- **Constant** 40 mph windspeed

# Destructive Resonance

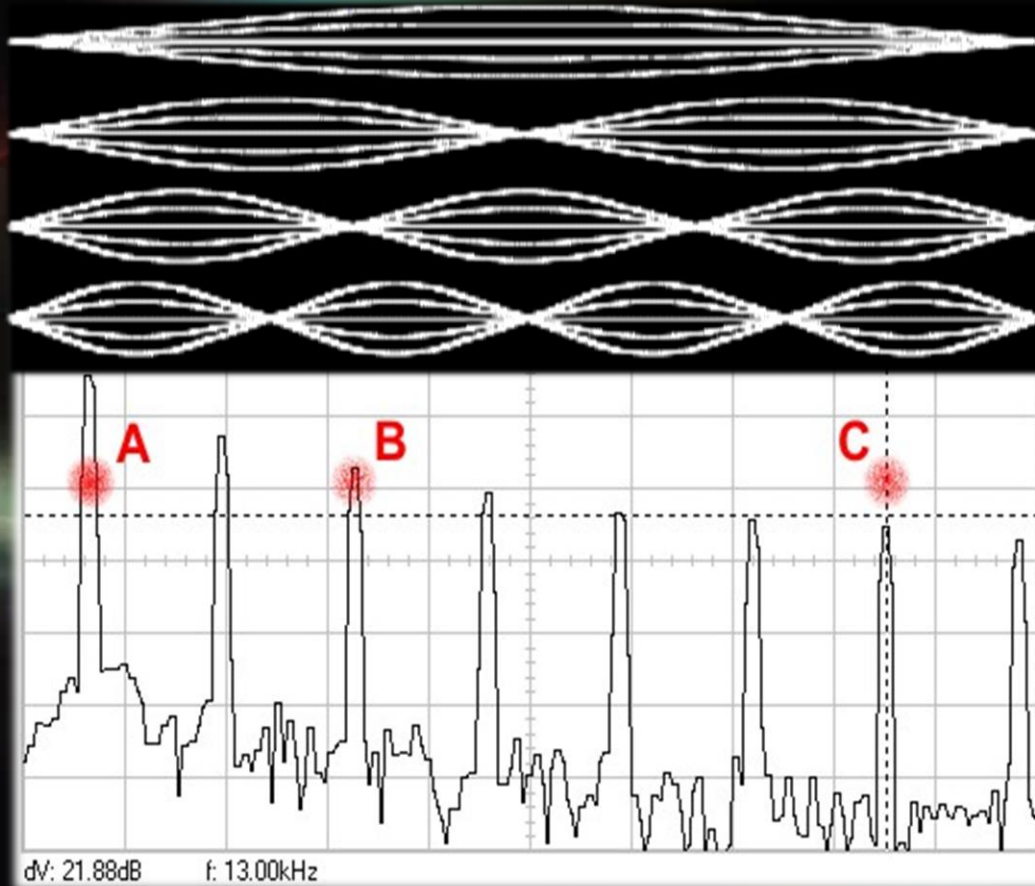


- Energy is coupled with another object
- Secondary object continues to absorb energy and enhanced movement continues with ever increasing energy absorption
- Structural failure results when energy/movement exceeds recipients capabilities



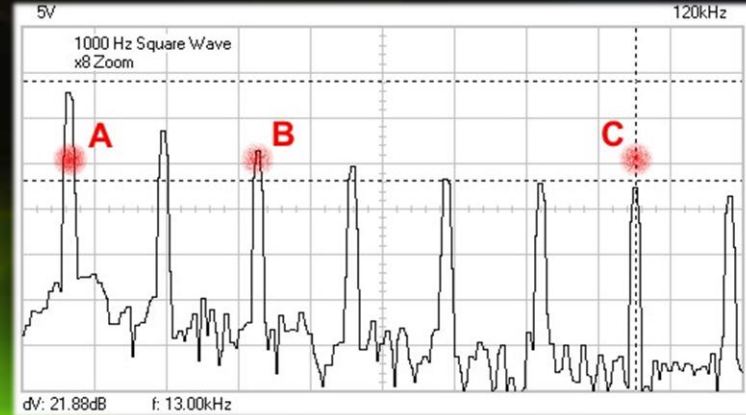
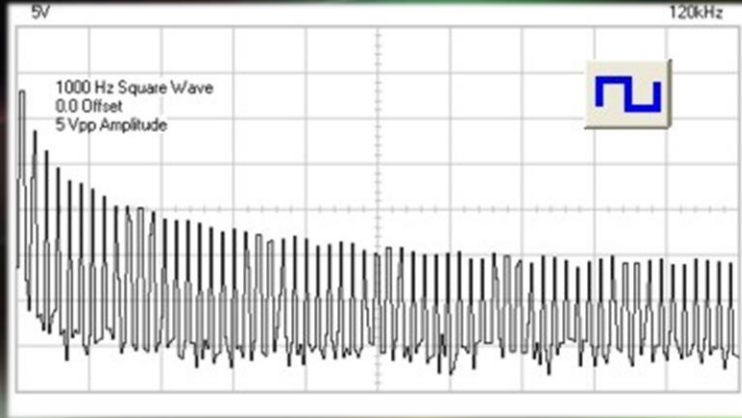
# Harmonics

- A **harmonic** is a signal whose frequency is a whole-number multiple of the frequency of the reference or fundamental signal.

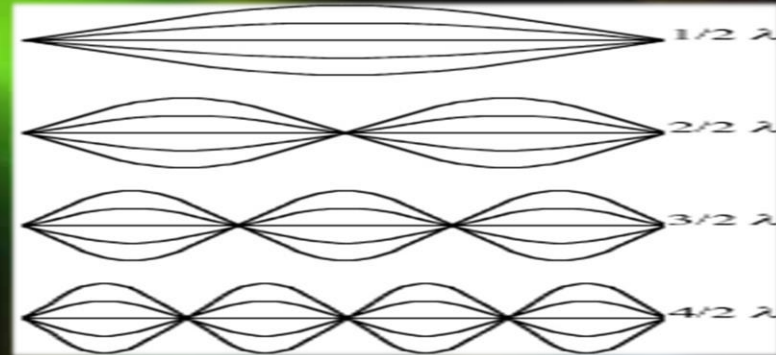




# Spectral Emission Harmonics

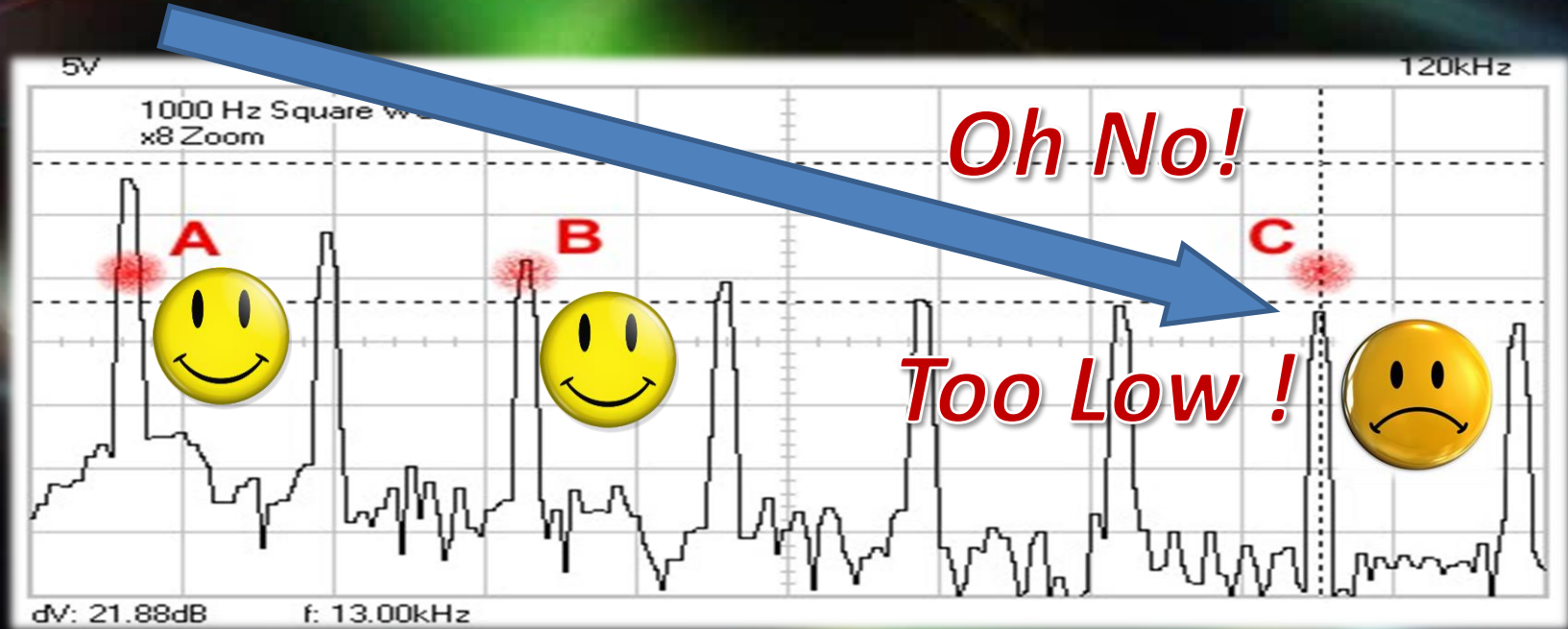


- The use of Square and certain modified waveforms allow for harmonics which can be clearly seen across the spectrum

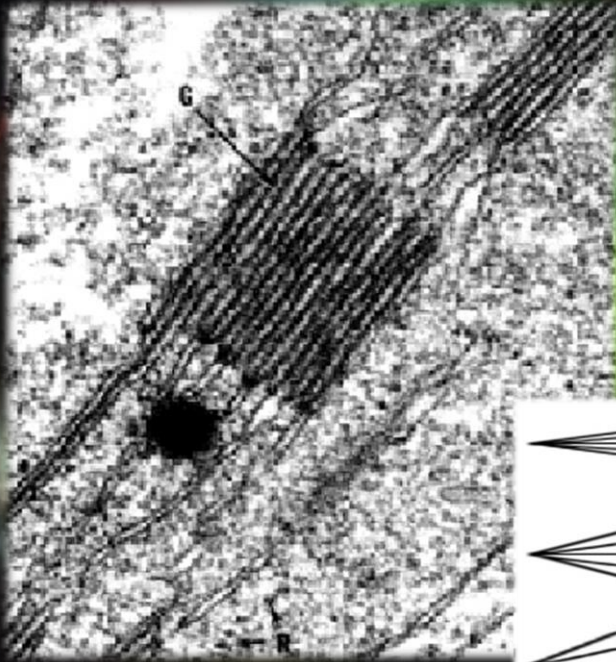


# Frequency AND Amplitude

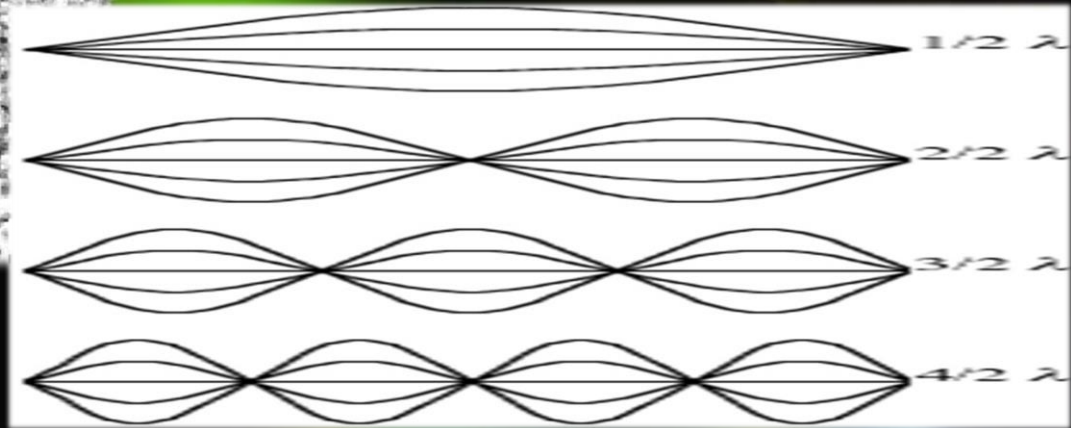
- A certain level of amplitude is required to bring about an effect



# Resonance/Wavelength



- Physical match or resonance of wavelength is where transfer of energy most efficiently takes place



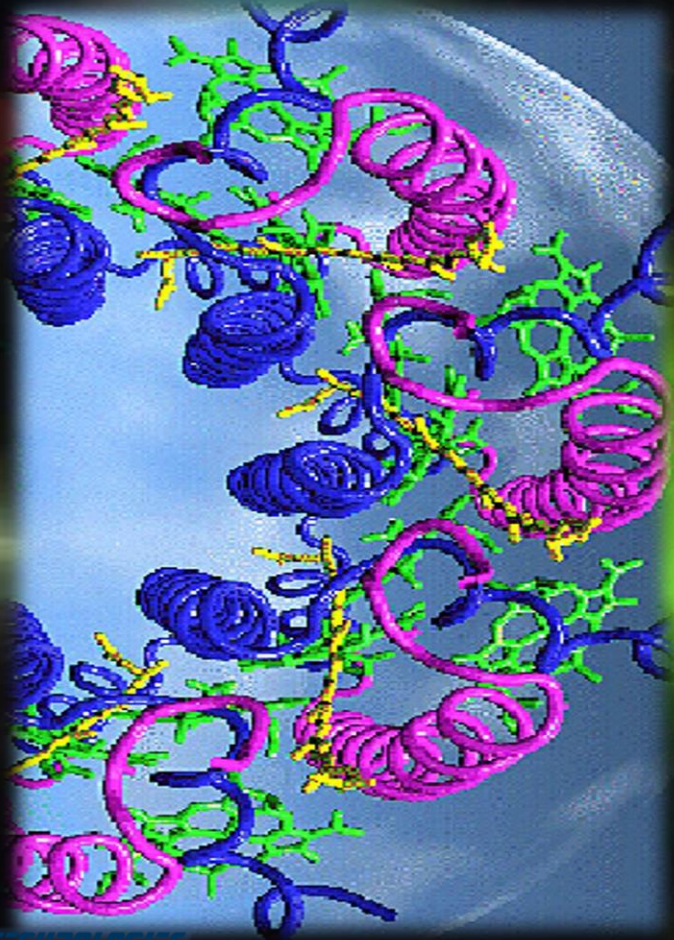
# Emission & Coupling



- Coupling takes place *in vivo* or *in vitro* by conventional EM means
- Coupling ALSO likely exists by quantum means at atomic levels





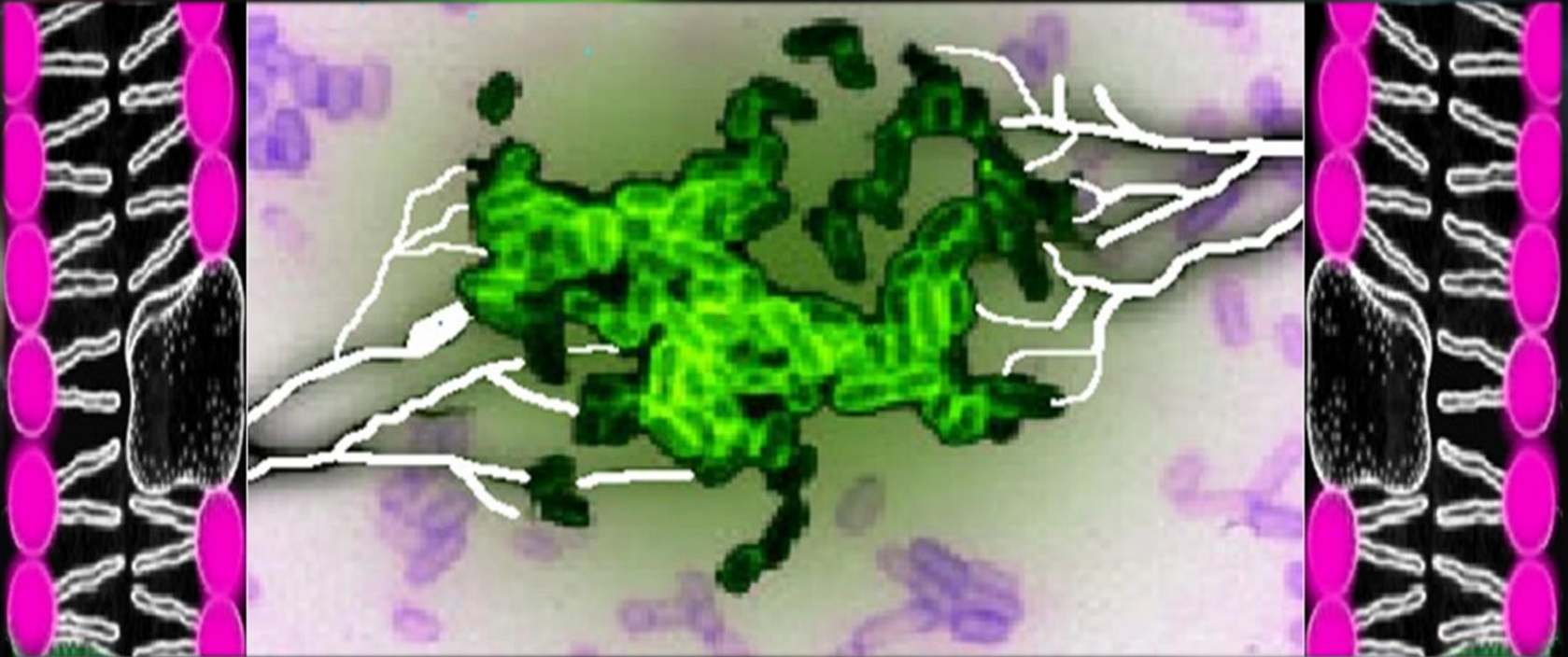


# Molecular Antennas

- In the body, every protein and nucleic acid has a specific length and molecular weight, both of these physical aspects can be used to calculate the resonant frequency of a molecule.
- The length of an object can determine the resonant frequency of the object because of its correlation with wavelength.

# Membrane Electrical Charge

- Electrical Potential, (voltage), is stored in the cell membrane and certain internal structures



# Jimmie L. Holman

- Those who choose to look at Rife ONLY in the destructive mechanisms that have typically become associated with the technology, ... are probably missing out on about 98% of the capabilities the science has to offer.

*Jimmie Holman*  
*Pulsed Technologies*





# Modis Operandi

- Destructive
- Constructive
- Supplemental
- Combinations

# Cancer Scenerio

- Before Exposure



- 24 hrs After Exposure



- After 2<sup>nd</sup> Exposure  
24 hrs Later



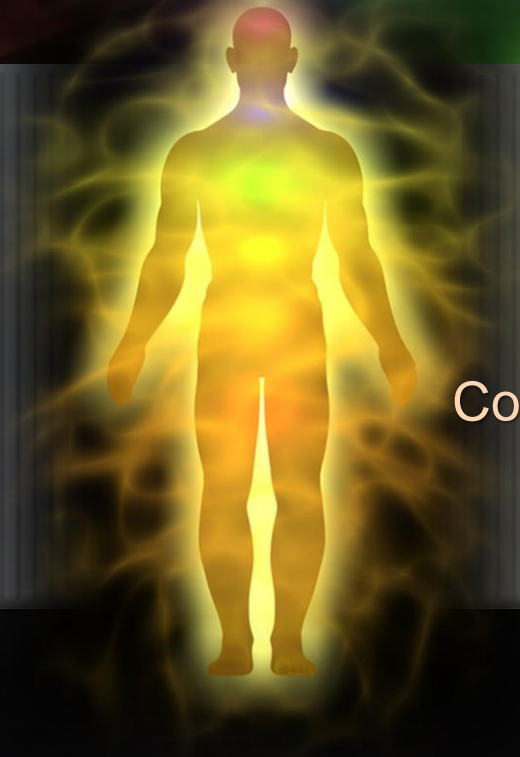
**Cancer (before exposure)**



**Cancer (24 hrs after exposure)**

**Cancer (24 hrs after 2<sup>nd</sup> exposure)**





# Energy Fields

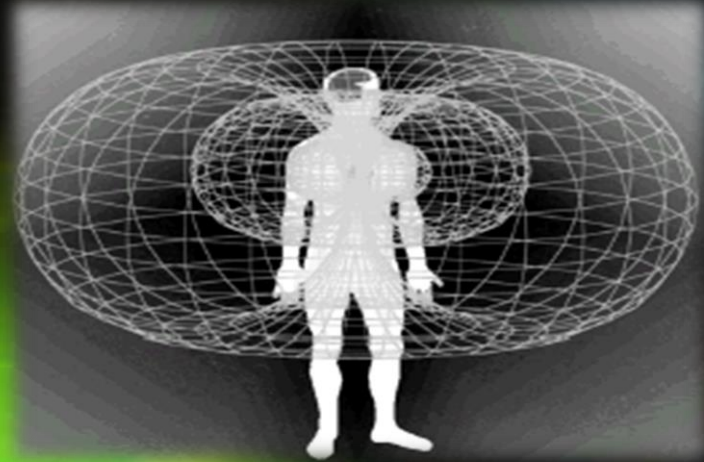
Coherent Forms and the Biological Templates

# All Living Organisms Evolved and Exist in a Sea of Electromagnetic Energy



# The Human Energy Field

- The human body continually has energy moving through it which creates an organizing Quantum Electro Dynamic Field that creates, surrounds and permeates the matrix of the body
- This standing energy field may regulate the neural and chemical control systems of the body
- This field is the primary information system of the body and is involved in pattern formation



# Human Energy Field

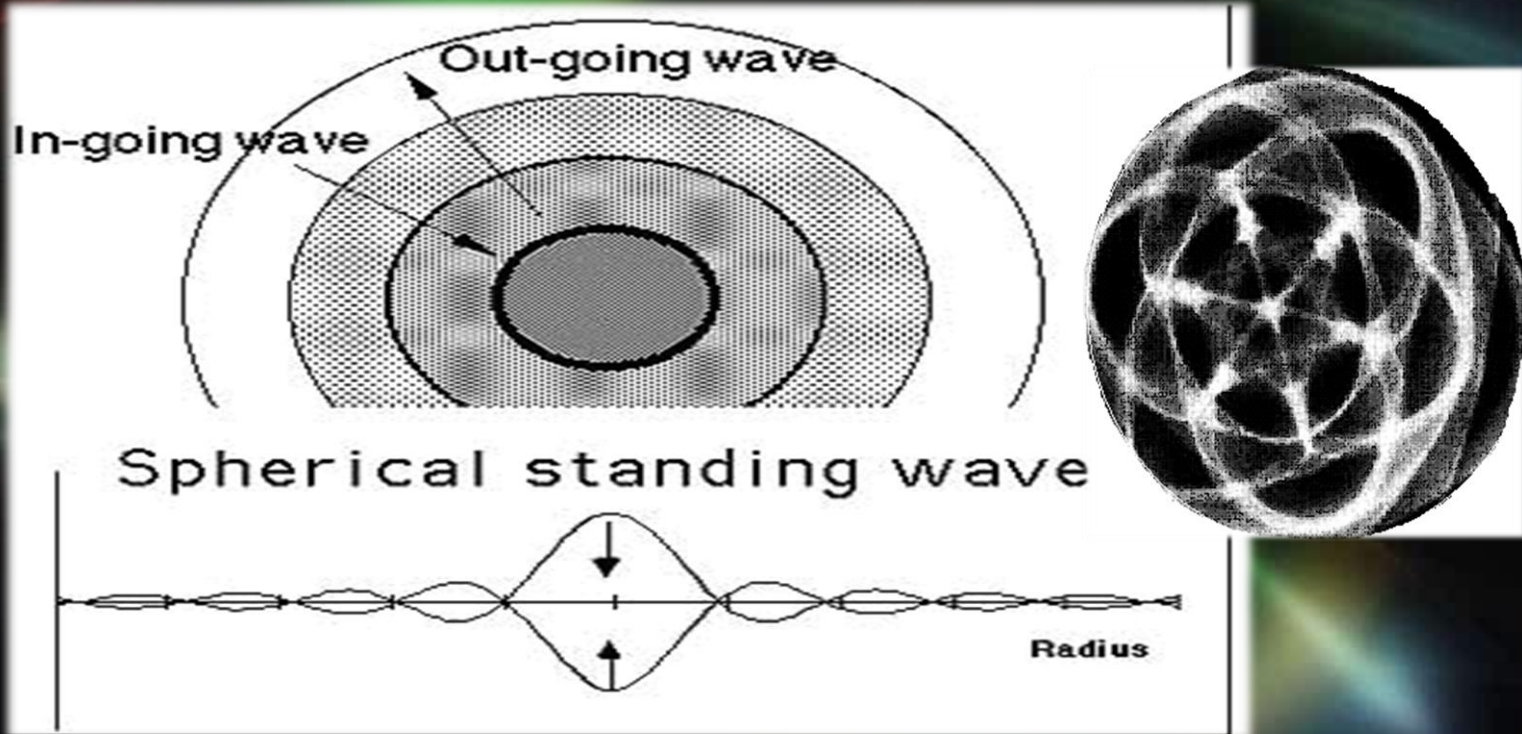
- This field is FAR more dynamic than the previous illustration suggests!



# Wave Interaction

- According to quantum theory, an entity whether it is an atom or a molecule simultaneously possesses both localized (particle) and distributed (wave) properties.
- When two waves come together they interact with each other producing an interference pattern, this is a pattern capable of holding information.

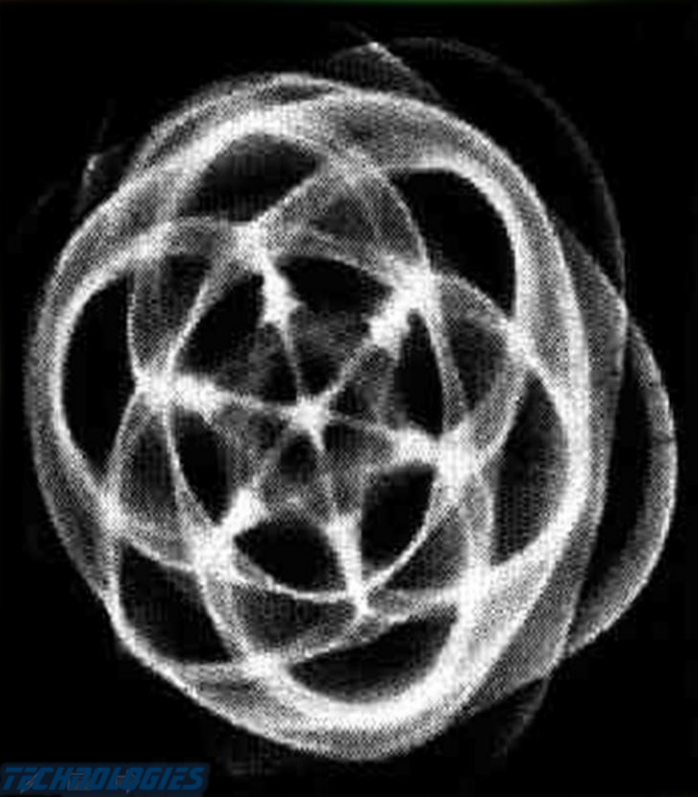
# Biological Cells & Tissues are Organized by Standing Waves





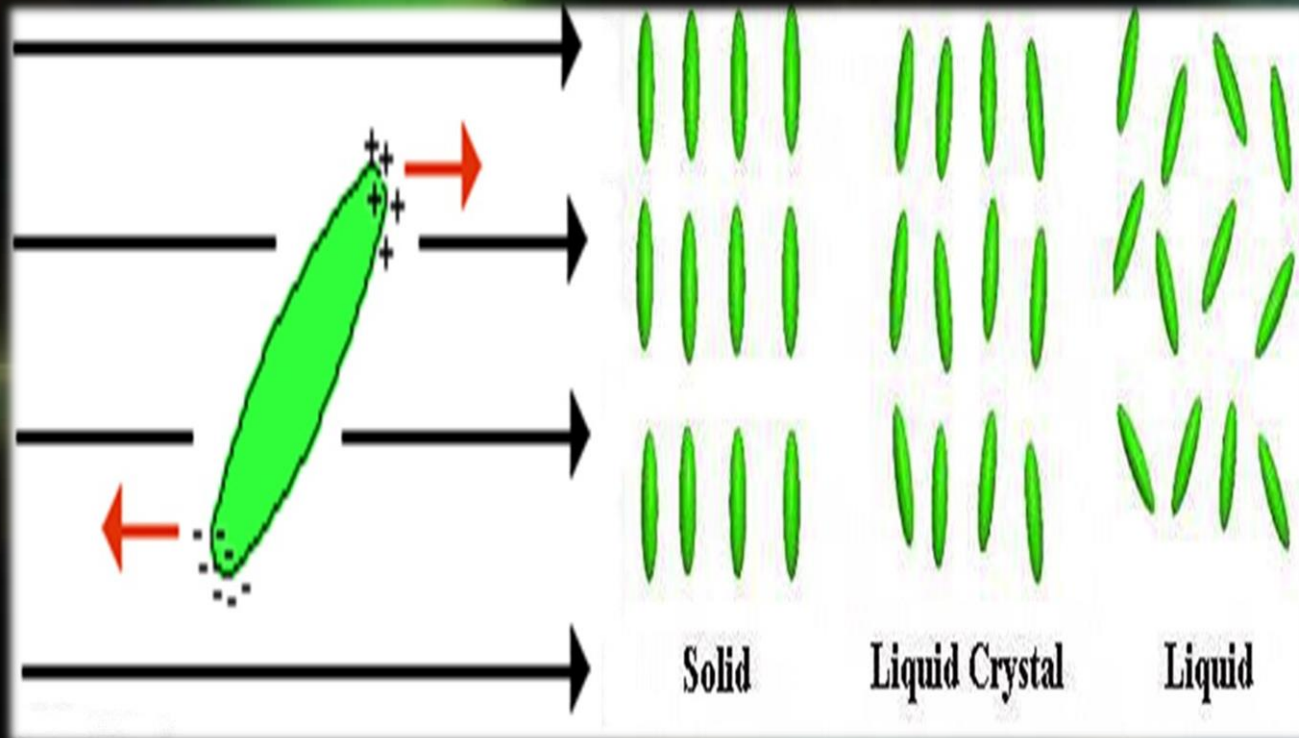
# Coherent Forms

- Physical forms are representative of the energy fields present. Energy is stored in coherent forms



# Liquid Crystal Arrays

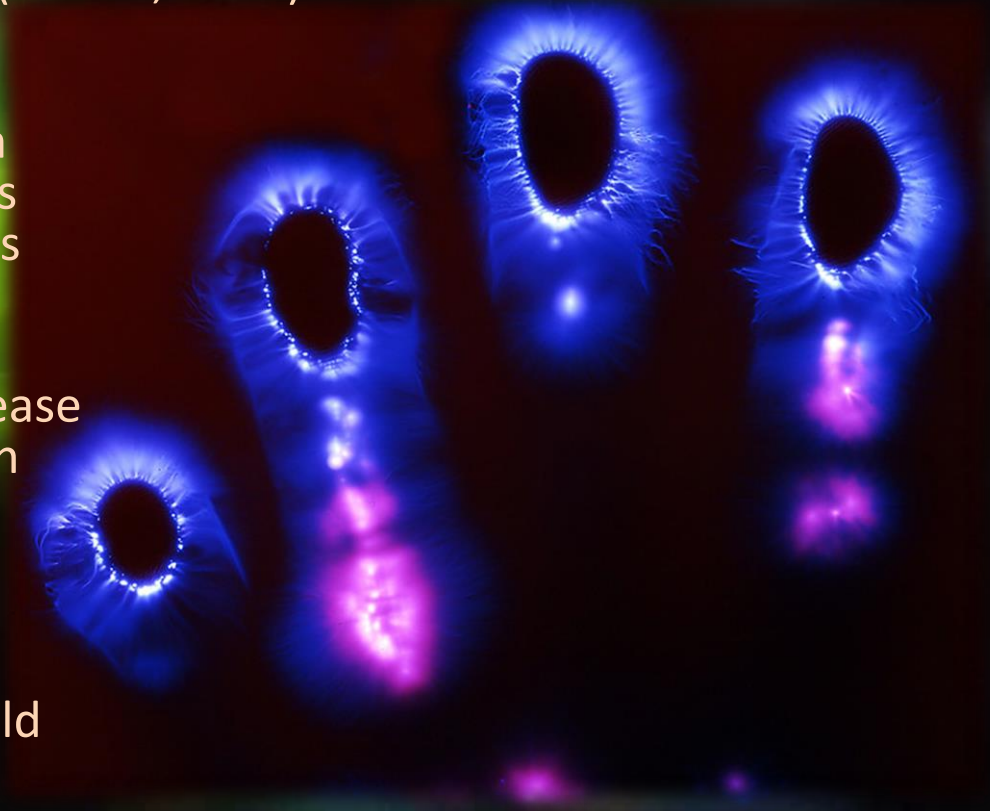
- Biological molecules are -Liquid Crystals, which will array in coherent patterns when exposed to EMFs





# The Human Template

- According to Robert Becker the body has a DC electric field (Becker, 1990).
- According to Valerie Hunt, changes occur in the human energy field prior to changes occurring in physical systems (Hunt, 1989).
- One could theorize that disease and healing manifests first in the energy matrix and then the physical matrix
- Therefore reorganization of damaged energy matrix could facilitate healing.



# Regeneration into the Matrix



# Continued Regeneration





# Successful Regeneration

- Successful complete natural rebuilding into the human matrix

11 AUG. 1995

JUL. 199

MIN

# Dr. Konstantin Korotkov

- Nowhere is this human energetic field (the blueprint) better shown today than with the GDV work of Dr. Korotkov



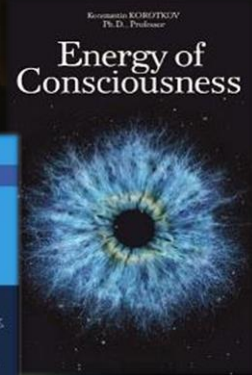
Electrophotonic analysis  
GDV Bioelectrography Research

Ekaterina Jakovleva, PhD  
Konstantin Korotkov, PhD

2013

Konstantin KOROTKOV

ENERGY FIELDS  
ELECTROPHOTONIC  
ANALYSIS  
IN HUMANS AND NATURE







# pH

Acidity / Alkalinity

# pH

- It is ironic most folks are more concerned and knowledgeable about the pH of their swimming pool or home aquarium than their own body.



# Chemical vs. Electrical System



- Conventional medicine approaches the body as a **BioCHEMICAL** system rather than a system controlled by a **ElectroCHEMICAL** processes
- Voltage/current pH
- Measurement of pH is really an indicator of cellular voltage/current

# Healing = Voltage = pH

- Conventional
- Voltage
- Measurement

*[still IN-WORK]*



# pH (Potential Hydrogen) Basics

- Water ( $\text{H}_2\text{O}$ ) ionizes into:  
Hydrogen (**H<sup>+</sup>**) ions and Hydroxyl (**OH<sup>-</sup>**) ions
- **ACIDIC (<7pH)** – there exist more  $\text{H}^+$  ions than  $\text{OH}^-$  ions  
 $\text{H}^+$  is an **ELECTRON STEALER**
- **ALKALINE (>7pH)** – there exist more  $\text{OH}^-$  ions than  $\text{H}^+$  ions  
 $\text{OH}^-$  is an **ELECTRON DONOR**
- A **pH of 7.0 is NEUTRAL** (neither acid or base/alkaline and represents a voltage potential of 0)
- Chronic disease is almost always associated with **ACIDIC pH**
- Health is associated with a slightly **ALKALINE pH**

# pH Scale Examples

pH = 0
pH = 1
pH = 2
pH = 3
pH = 4
pH = 5
pH = 6
pH = 7
pH = 8
pH = 9
pH = 10
pH = 11
pH = 12
pH = 13
pH = 14

- 0 - Battery Acid
- 1 - Hydrochloric Acid (Stomach Lining)
- 2 - Lemon Juice. Gastric Acid, Vinegar
- 3 - Grapefruit, Orange Juice, Sodas
- 4 - Tomato Juice, Acid Rain
- 5 - Softened Drinking Water, Black Coffee
- 6 - Urine, Saliva
- 7 - "Pure" water
- 8 - Sea Water
- 9 - Baking Soda
- 10 - Salt Lake, Milk of Magnesia
- 11 - Ammonia Solution
- 12 - Soapy Water
- 13 - Bleaches, Oven Cleaner
- 14 - Liquid Drain Cleaner

# pH Scale – Examples of Hydrogen Ions Compared to Distilled Water

pH = 0	10,000,000
pH = 1	1,000,000
pH = 2	100,000
pH = 3	10,000
pH = 4	1,000
pH = 5	100
pH = 6	10
pH = 7	1 (neutral)
pH = 8	1/10
pH = 9	1/100
pH = 10	1/1,000
pH = 11	1/10,000
pH = 12	1/100,000
pH = 13	1/1,000,000
pH = 14	1/10,000,000

- pH = potential Hydrogen Ions
- pH is largely an ELECTRICITY related measurement



*pH*  
ACID

NEUTRAL

BASE

*Potential(v)*

+400mV

0mV

-400mV

*Characteristics*  
Electron STEALER  
Destructive  
Free Radical  
(Spins Left)

# pH Scale Characteristics

(Spins Right)  
Antioxidant  
Constructive  
Electron DONOR





# Voltage

Electrical Potential

# Voltage / pH / Pain

- Alteration of pH toward the **Acidic** is interpreted by the brain as **PAIN**
- **Correcting** the pH **CURES** the PAIN
- Conventional Drugs simply **BLOCK** the pain “signal” (the cause still exists)\*
- Chronic pain is always associated with a **loss of voltage** (acidic pH) [Tennant]

*\* NOTE: Typical opiates indeed block the perception of pain, typically side effects include confusion, sedation, nausea, constipation, addiction, and suspected suppression of immune system and other biological processes.*

# Voltage – Healing - Disease

- Cells in the body typically run at about -22 (to 30) mV
- During repair, voltage is increased to -50 mV until repair is accomplished.
- “Problems occur when the cell runs out of Voltage before healing is accomplished”
- Metabolic cellular functions simply don't function well when the cell is in a low voltage state.
- At +30mV, Damage to DNA and production of tumors occur



*IMPORTANT NOTE: Voltage reference source: Dr. Jerry Tennant, M.D., Healing Is Voltage, p3.  
The quantitative values supplied here are for relative concept only as specific values contradict accurately measured systems given elsewhere in this presentation*

# Longevity, Aging & Healing

- In both aging (Barker, 1983) and degenerative conditions cells **lose their membrane charge**. Photo and **frequency therapy** has the ability **recharges cell membranes**.
- The cells can then use this energy in many ways; but most especially in **production of ATP**, the “energy currency” of the living tissue.
- In restoring the charge of the cells that are functioning sub-optimally, the body can be moved naturally towards a state of health, which is manifested by faster tissue regeneration (Vodovnik, 1992).





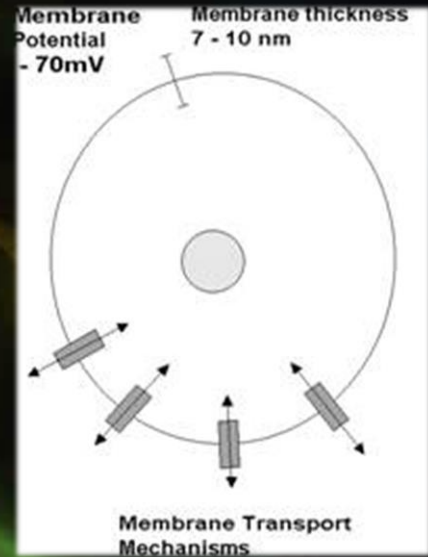
# 3 Underlying Themes



- Endogenous electrical activity of the body can be used as **indicator of a particular pathological process without attributing a cause/effect relationship**. [Edelberg 1971,1977 Marino et al. 1989, Woodrough et al 1975]
- Endogeneous electrical activity of the body acts as an initiator, **control mechanism or modulator of the post embryonic growth & healing processes**. [Becker et al. 1962, Becker 1967, 1974, Borgens, Foulds and Barker 1983, Kinkle et al. 1981, Illingworth and Barker 1980, Patel and Poo 1982]
- **By enhancing the endogeneous electrical activity of damaged tissues, the growth and/or healing processes can be stimulated or enhanced** [Brighton et al 1981, Brown et al. 1988, Carley and Wainapel 1985, Kincaid 1989, Kloth and Feedar 1988, Reed, Rowley et al. 1974, Wheeler et al. 1969]

# The Bioelectric Cell

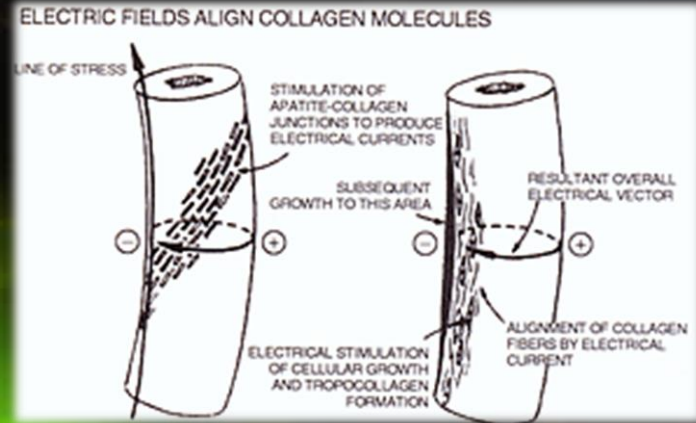
- Every Living cell has a membrane potential, (appx -70mV) with the inside of the cell being **NEGATIVE** relative to its external **POSITIVE** surface.
- Cell membrane potential is strongly linked to cell membrane **TRANSPORT MECHANISMS**
- Most of the material that crosses the cell membrane is ionic (**CHARGED** movement of **CHARGED PARTICLES**)



- **Movement of CHARGED PARTICLES influences MEMBRANE POTENTIAL**
- **Change of MEMBRANE POTENTIAL influences ion/CHARGED PARTICLE MOVEMENT**

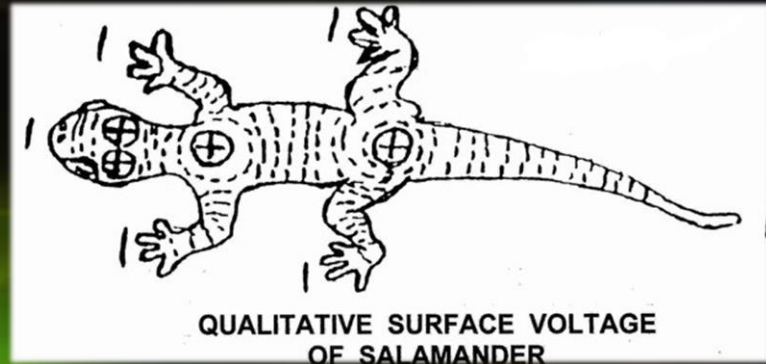
# Endogenous Bioelectricity

- **TISSUE BATTERIES** and other tissues found in bone, skin, muscle, nerve and produce a potential difference (**VOLTAGE**) between parts of the tissue.
- This voltage is **DIFFERENT** in injured and non-injured situations
- **BONE** exhibits piezoelectric potentials, streaming potentials, and steady potentials [Fukada 1984, Pollack et al. 1984, Friedenberg et al. 1973, Borgens 1984, Chakkalakal et al. 1998]
- **SKIN** responses to physical and psychological stimulation and injury [Barker et al. 1982, Edelberg 1968, Foulds and Barker 1983, Christi and Venables 1971, Millington and Wilkinson 1983, Vanable 1989]
- **MUSCLE** [Betz et al. 1984, 1986]
- **COLLAGENOUS BASED TISSUES** [Anderson and Eriksson 1968, Athenstaedt 1970]



# Endogenous Bioelectricity

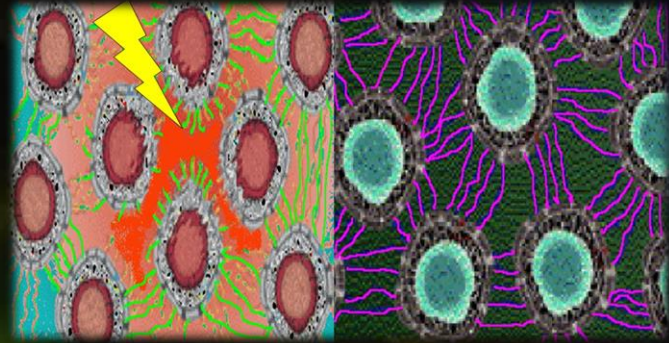
- **GROWING & DEVELOPING TISSUES** exhibit numerous and interesting bioelectric activities
- **Amphibian Limb Regeneration** [Borgens 1982, Becker 1961, Sissen 1983]
- **Mammalian Partial Limb Regeneration** [Neufeld 1989, Becker 1972]
- **Rabbit Ear Regeneration** [Chang and Snellen 1982, Goss 1981]
- **Fingertip Amputation and Regeneration in children** [Illingworth and Barker 1980]
- **Embryology and Morphogenesis** [Robinson 1989, Jaffe 1981, 1986, Jaffe and Nuccitelli 1977, Nuccitelli and Erickson 1983]





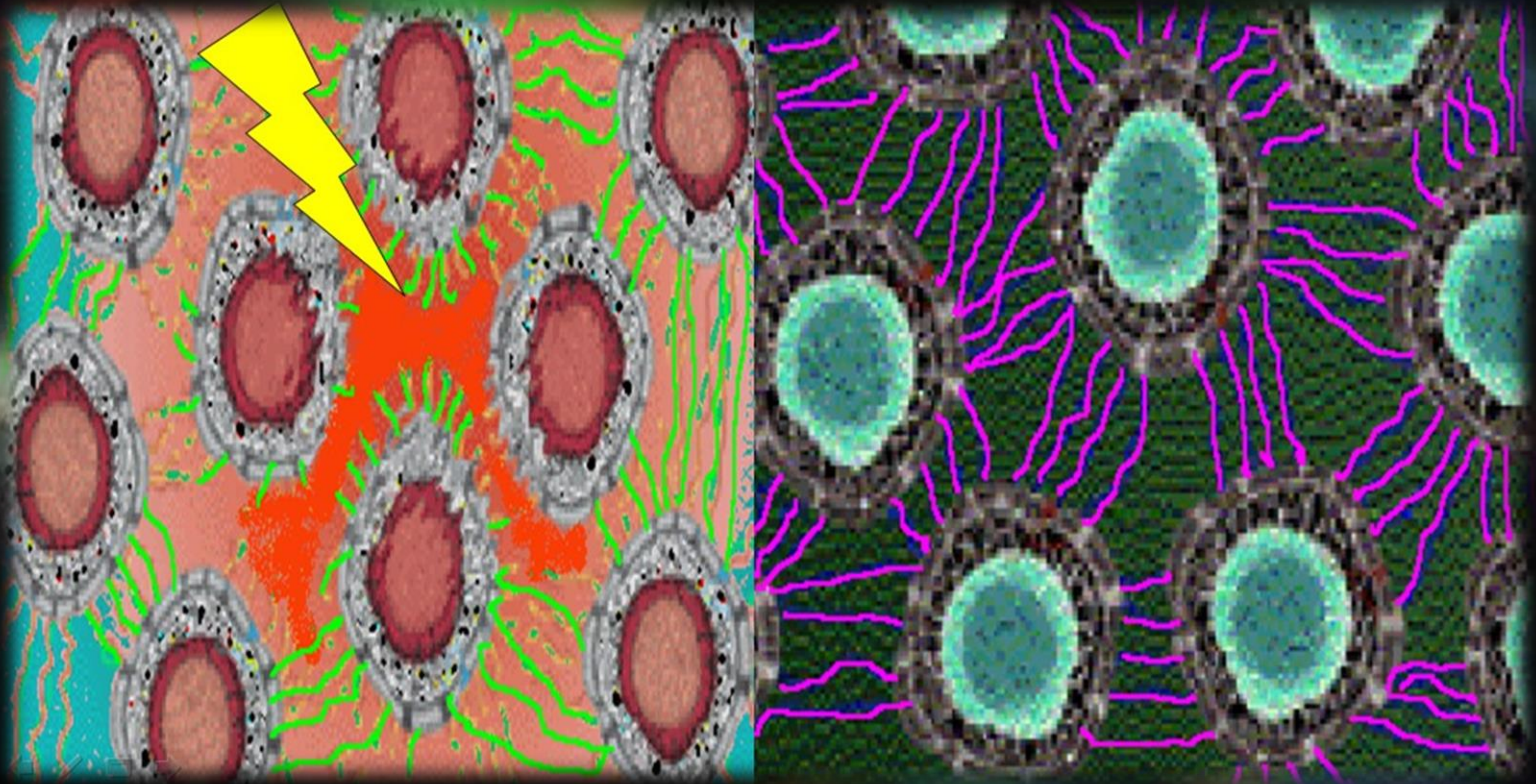
# Endogenous Bioelectricity

- **INJURED TISSUES** reported to be electrically active, and this appears to be more than an epiphenomenon.
- Origin of the injury potential remains debatable [Nordenstrom 1983, Thakor and Webster 1978, Becker 1967, 1974]
- Tissues which have demonstrable electrical changes on injury include:
  - **SKIN** [Barker et al. 1982, Foulds and Barker 1983, Jaffe and Venable 1984, Venable 1989]
  - **BONE** [Friedenberg et al. 1973, Lokietek et al. 1974, Chakkalal et al. 1988, Borgens 1984]
  - **MUSCLE** [Lokietek et al. 1974, Betz et al. 1984]
  - **NERVE** [Shibib et al. 1988a,b, Borgens and McCaig 1989]
  - **BLOOD VESSELS** [Sawyer et al. 1953]
  - **ULCERS & OTHER SKIN WOUNDS** appear to have electrical links [Carley and Wainapel 1985, Rowley 1985, Griffin et al. 1991, Kolth and Feadar 1988, Reed 1988]



# Disease / Breakdown

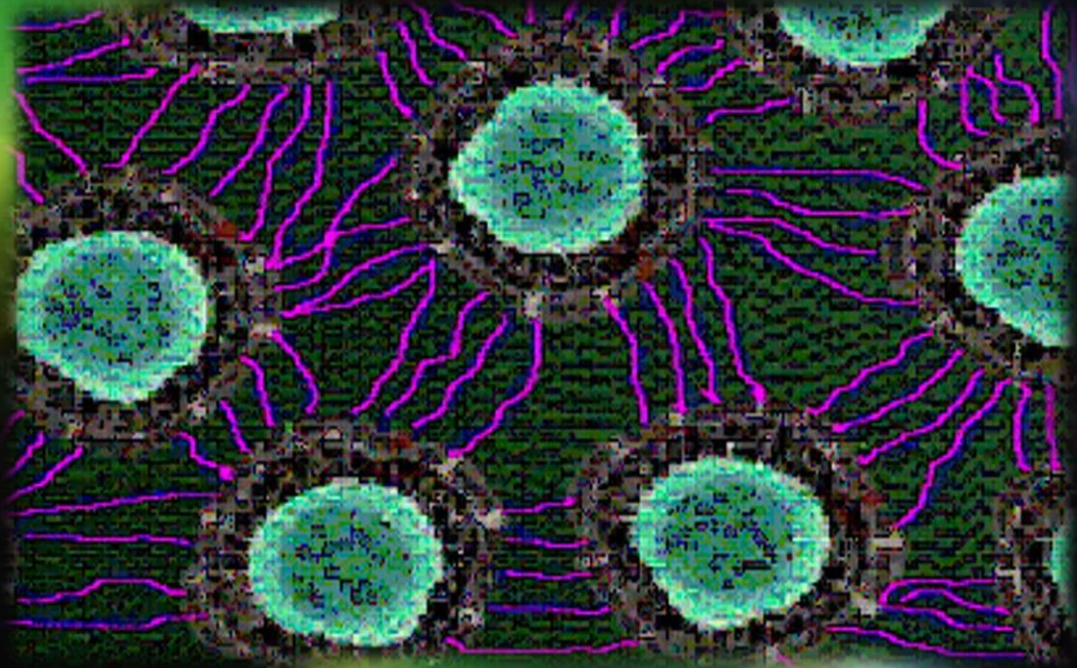
- Disease may be a result of the breakdown in integrity of the connections within and between the cells





# Disease / Breakdown

- Use of frequencies that match biological resonance promote healing
- By restoring current flow, recharging cell membranes, improving cell-to-cell communication,
- And by increasing nutrient uptake by cells, toxin release, protein synthesis, energy production, etc.



# Dr. Steve Haltiwanger, M.D., C.C.N.

## The Electrical Properties Of Cancer And Disruption Of The Living Hologram:

By: Steve Haltiwanger, M.D., C.C.N.

Subtitle: The Truth is Out There

9/29/2003

## Biological Energy And Electronic Nutrition

by Steve Haltiwanger MD

## Cell Membrane Health And Electronic Nutrition™

by Steve Haltiwanger MD

## The Science of Phototherapy

Steve Haltiwanger, M.D., C.C.N.

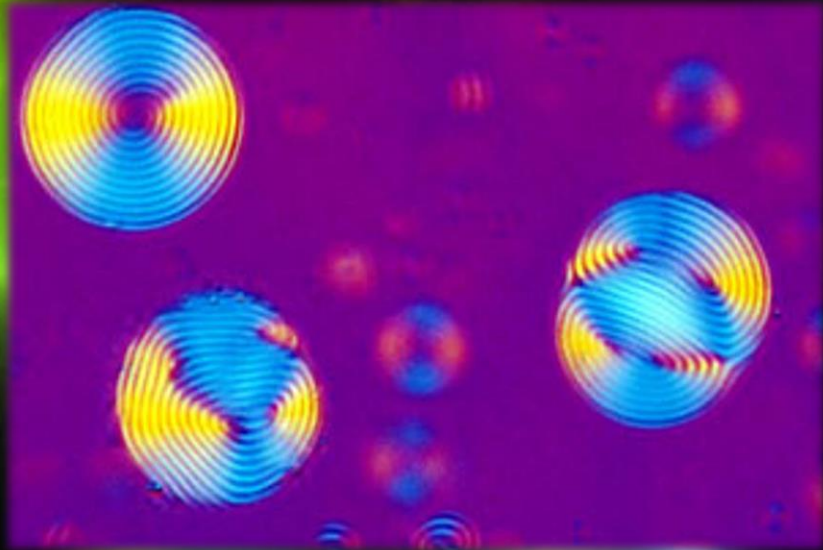


- These presentations will also be available for download at <http://www.PulsedTech.RO/haltiwanger>



# Destruction or Healing

- With Rife technology, pathogens can be oscillated to destruction by applying specific frequencies that increase their resonant frequency amplitude.
- Healing of cells and tissues can also be enhanced by the correct resonance, since every substance has its own unique vibration or signature.
- HOW?

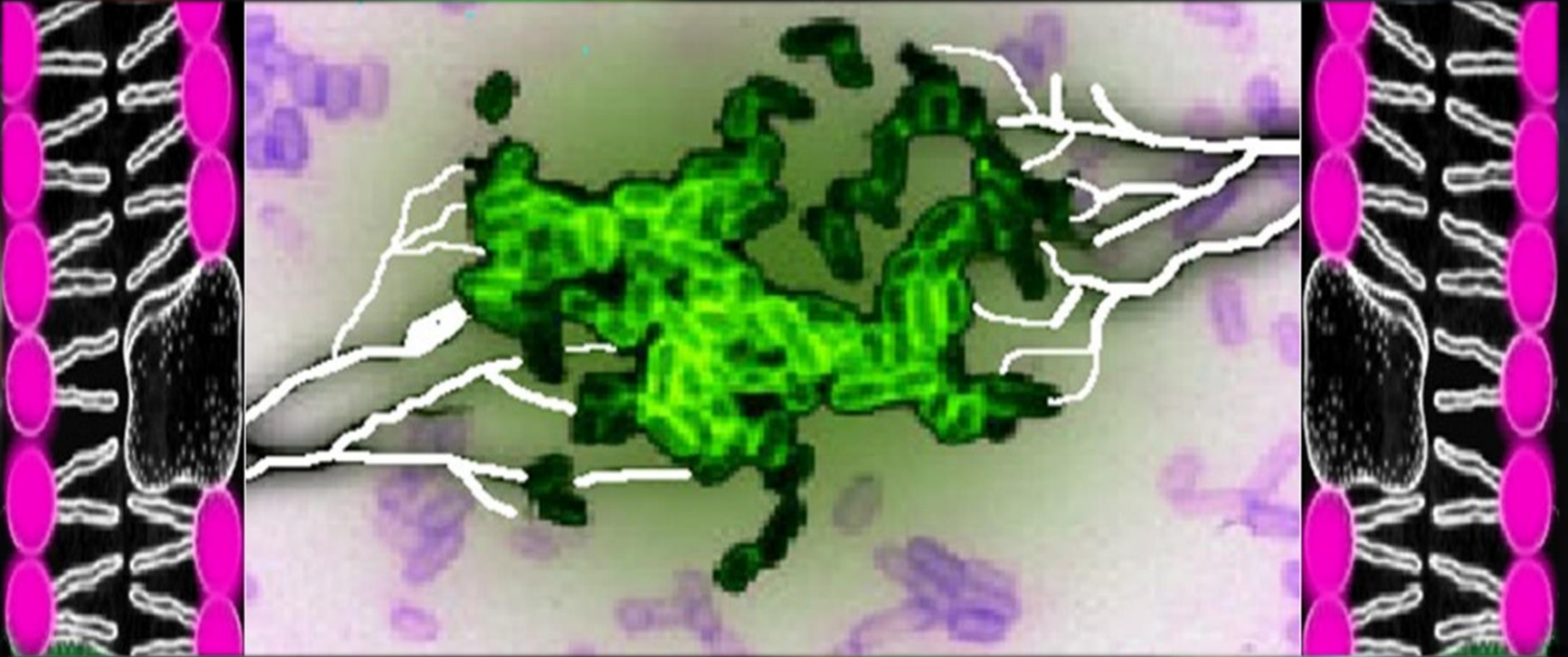


# Fundamental Philosophy

- We don't get well by making defective cells work
- We get well by making **NEW cells work correctly**
- Pharmaceuticals are not needed to make new cells
- Pharmaceuticals may **buy time** for the body to repair
- The key to solving chronic disease is to **make the cells work and/or work better**
- The cells **MUST have the needed materials** (nutrients, fats, proteins) available for use
- The cells **MUST have the needed energy** (electrical charge) to power the metabolic functions

# Membrane Electrical Charge

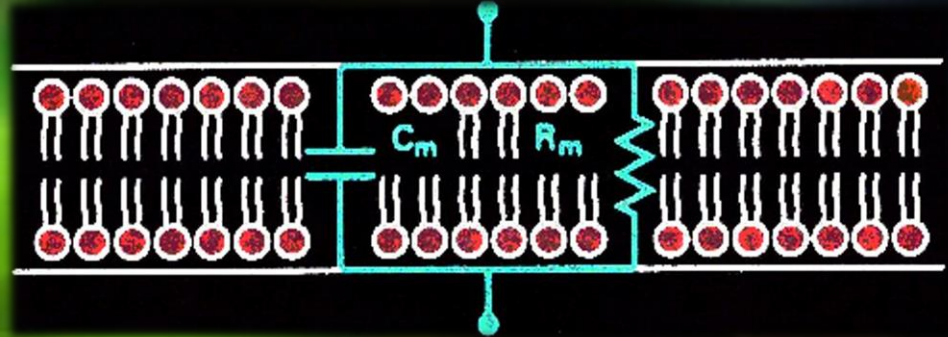
- Text Here





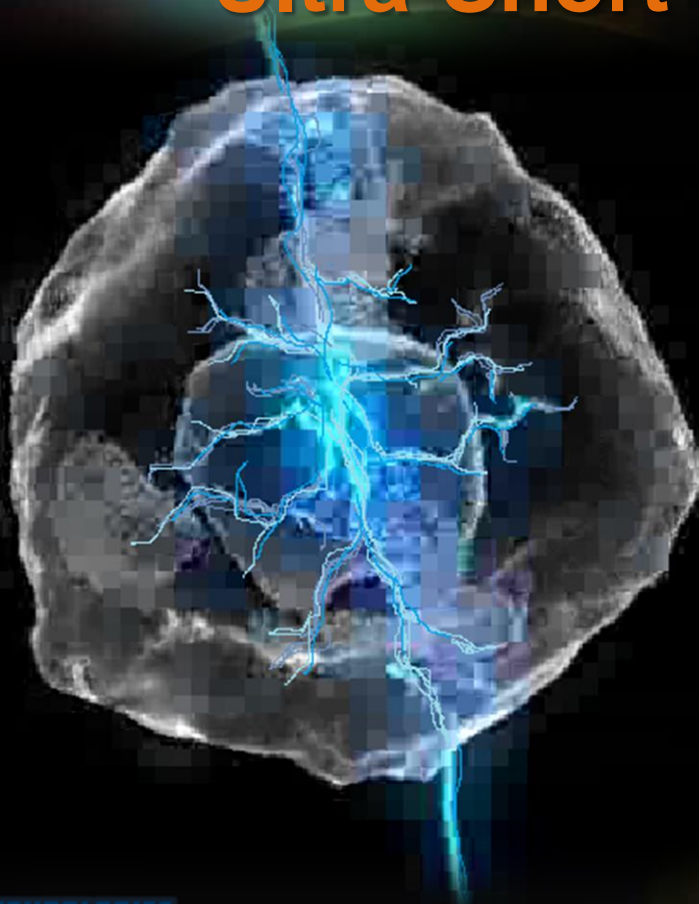
# “Charging” of Cell Membranes

- Multi-frequency delivery systems provide a range of electrical frequencies that will allow cells and their molecular components to match impedances and absorb energy at their resonate frequency.
- When energy is absorbed in the membrane the membrane potential will increase, which helps activate cellular mechanisms.





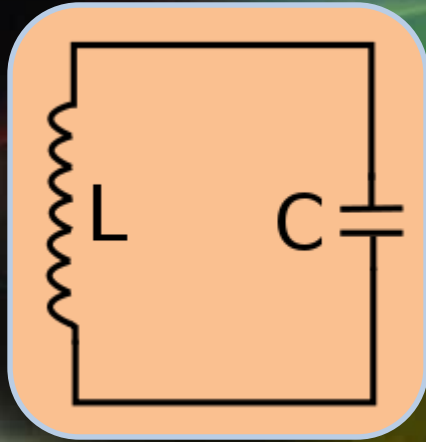
# Ultra-Short High Voltage Pulses



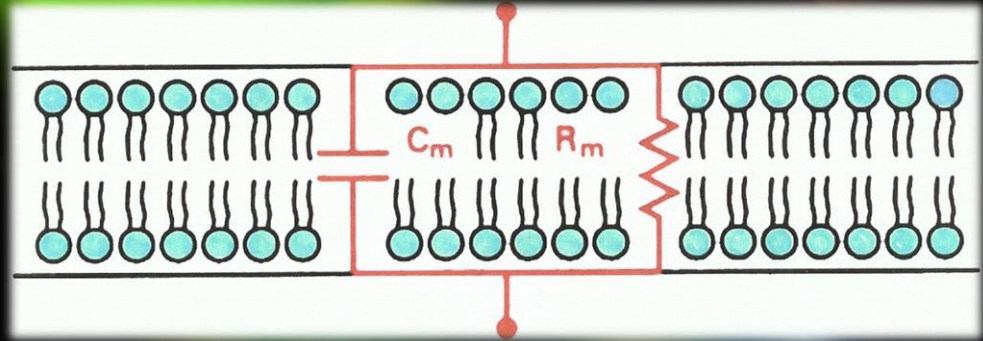
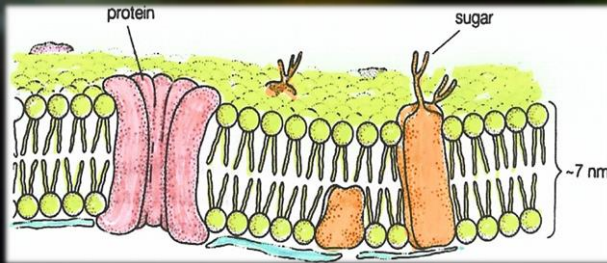
- Ultrashort Pulses “slip past” the cell membrane to deliver to internal structures.



# Tuned (LC) Circuit - Tesla

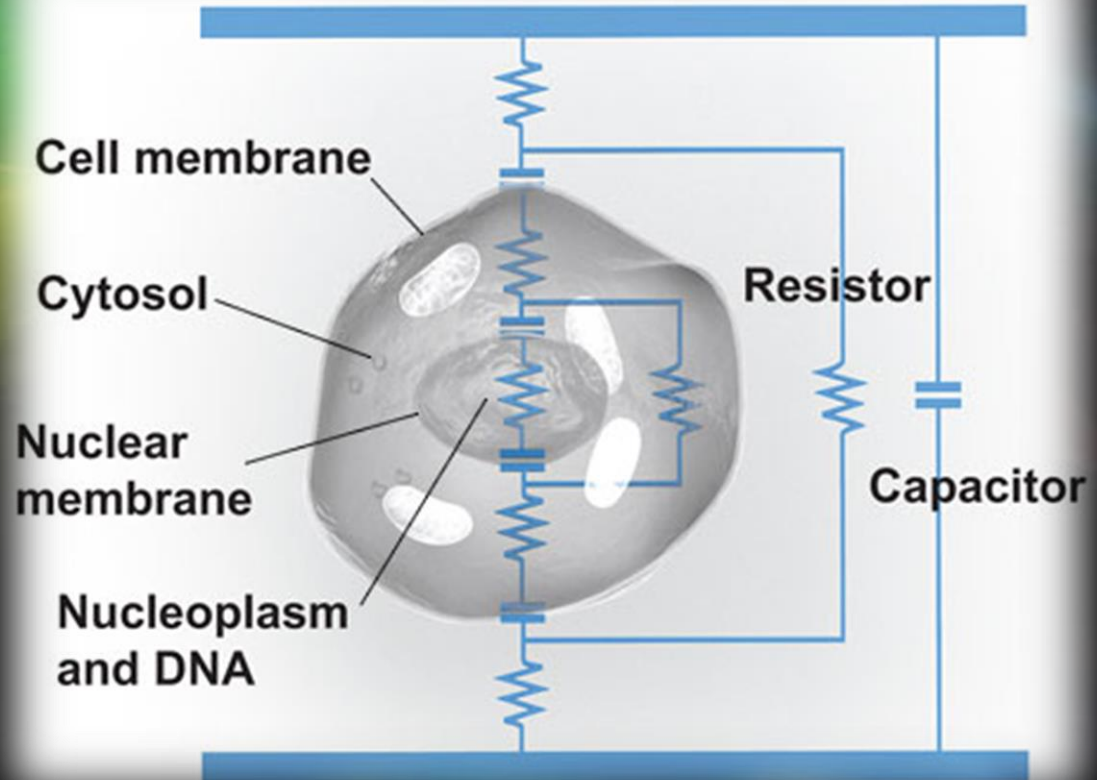


- Parallel Tuned Circuits are used in radio, TV, and other electronics to couple resonant energy from one circuit to another in transmitters and receivers.
- The cell membrane and peripheral cytoskeleton also uses this same system to couple energy from cell to cell and into the cell



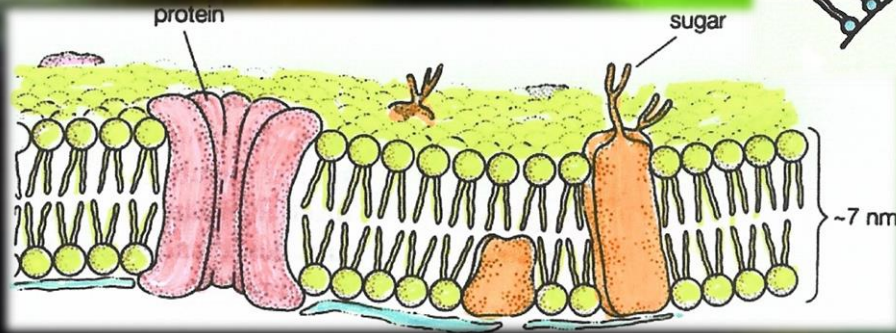
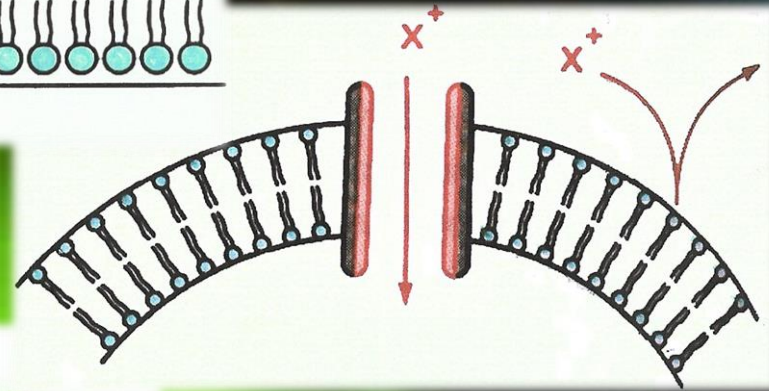
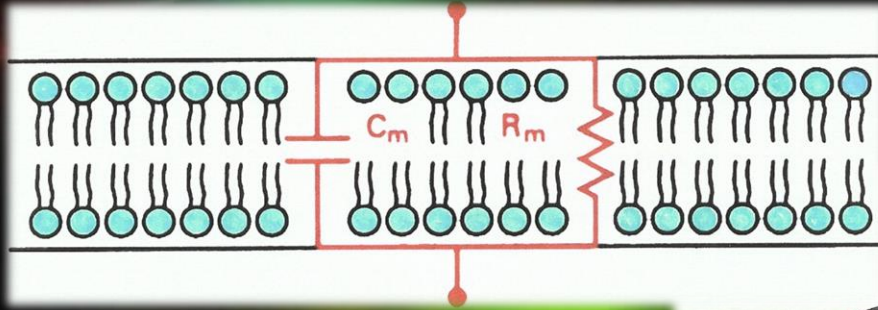
# Equivalent Cellular Electronics

- Membrane & Organelles act like **CAPACITORS**
- Liquid within the membrane, Cytosol & Nucleoplasm is conductive and resembles **RESISTORS**



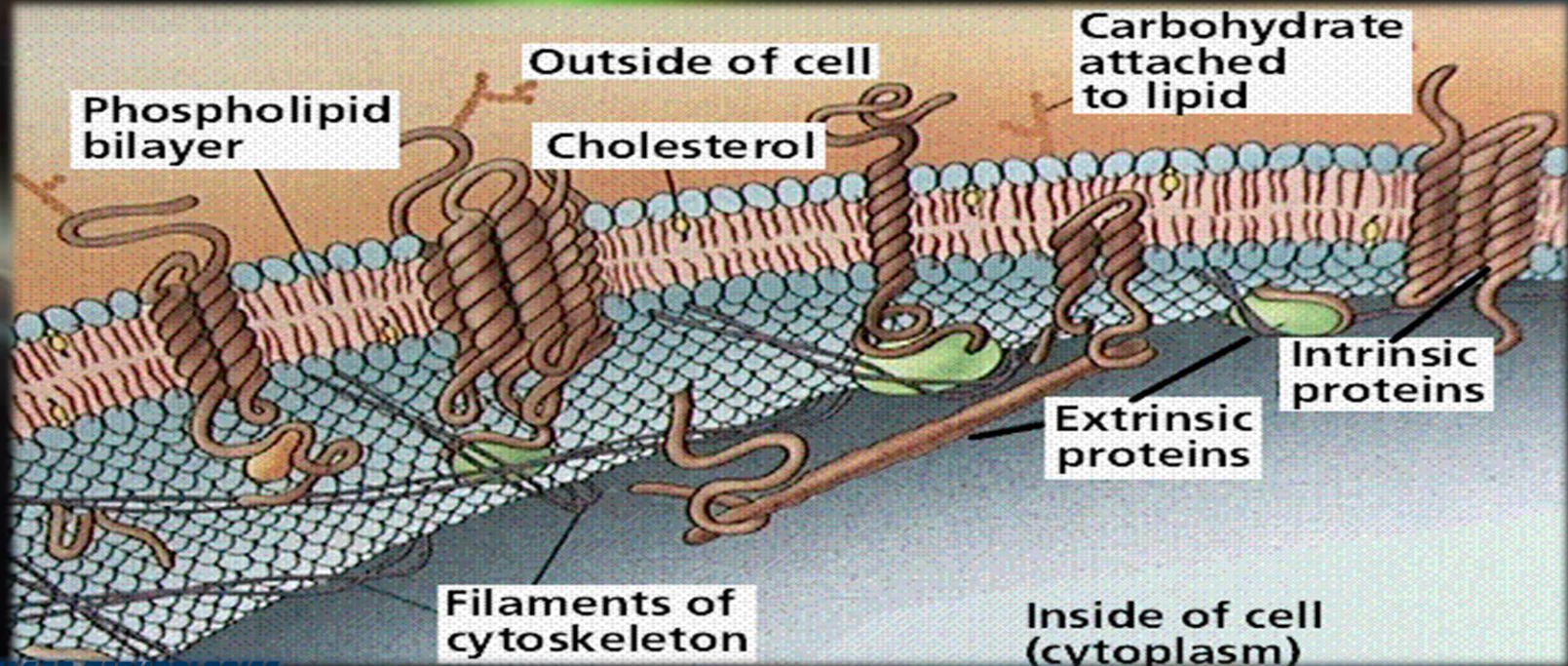


# Membrane Capacitance



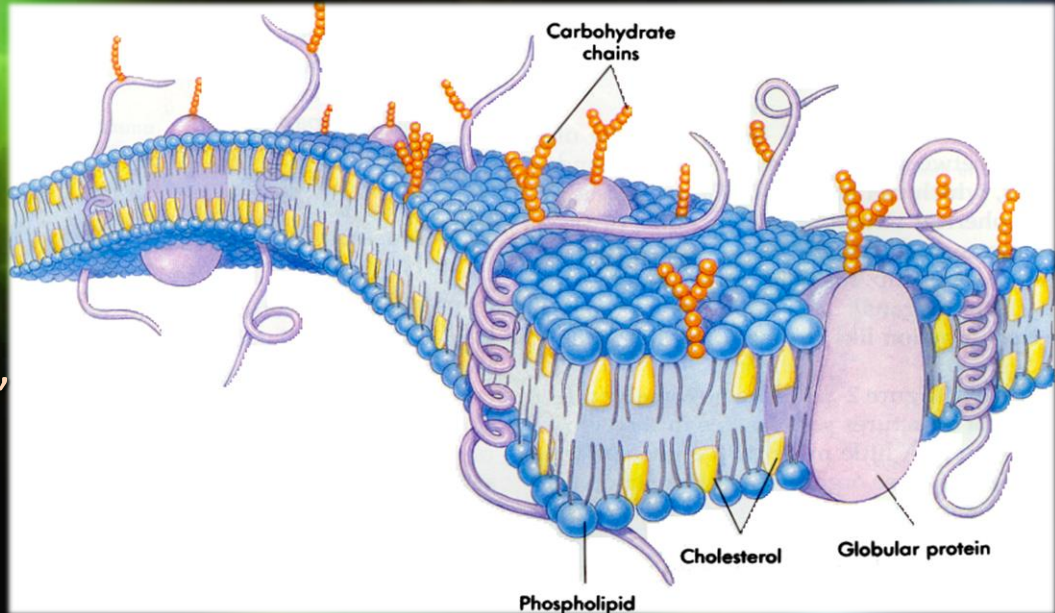


- **Conformational changes** in the membrane-receptor complexes initiate intracellular chemical reactions in enzymes bound to the **cytoskeleton**
- **First messenger signals** can be chemical, mechanical (needling), tensional (piezoelectric) thermal (moxibustion), acoustical (infrasonics), EMF (light lasers and LED phototherapy, radio waves, microwaves), magnetic and electrical)



# Membrane Electronics

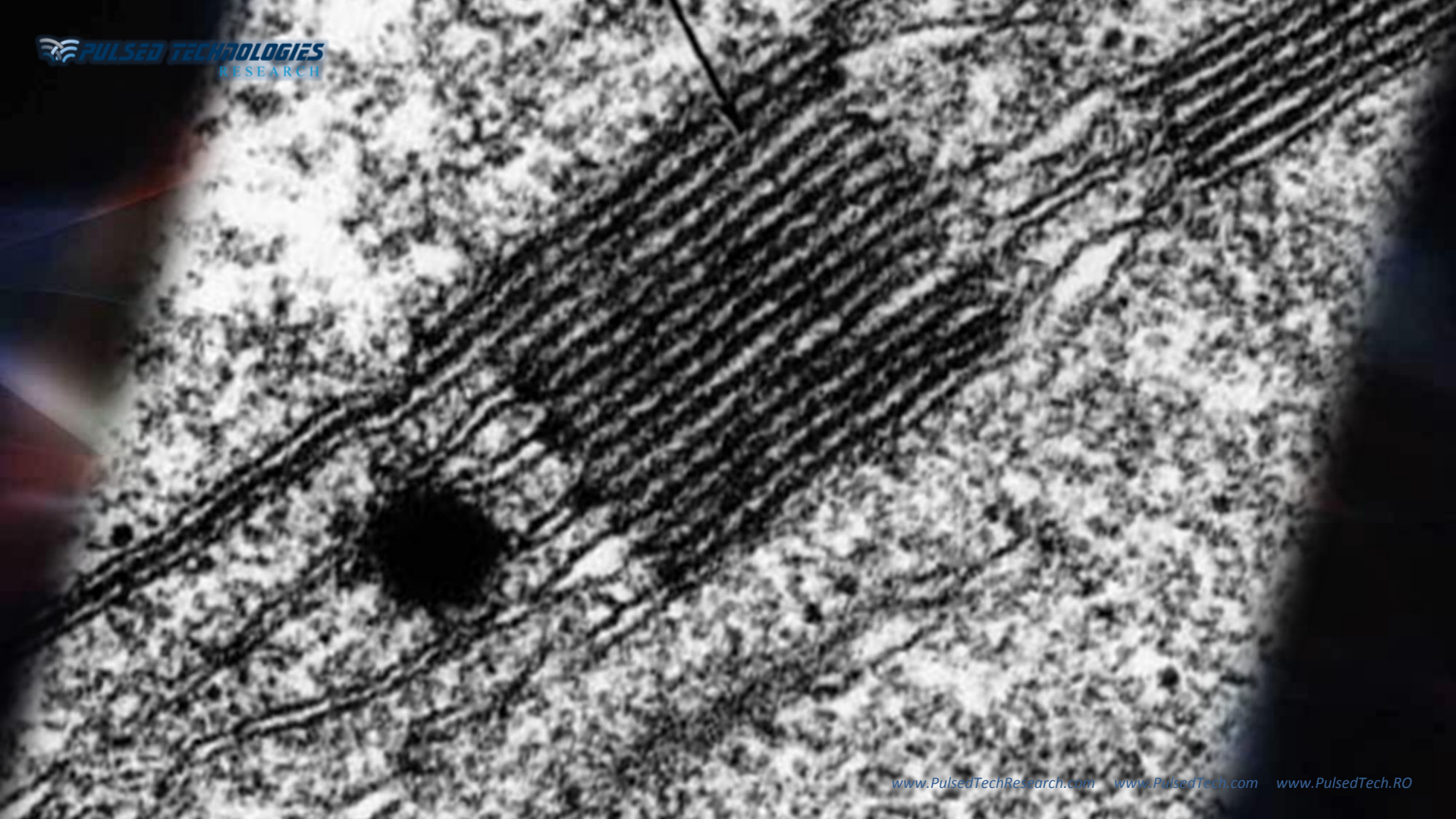
- Diet, presence of essential nutrients and type and level of toxicity play important roles in controlling membrane composition (structure) and **Capacitance function**.
- The cell membrane because of its structure has electrical properties that are involved in power transmission along the membrane and **energy transduction**, which permits certain wavelengths of energy to initiate biological effects.





# Cellular Components

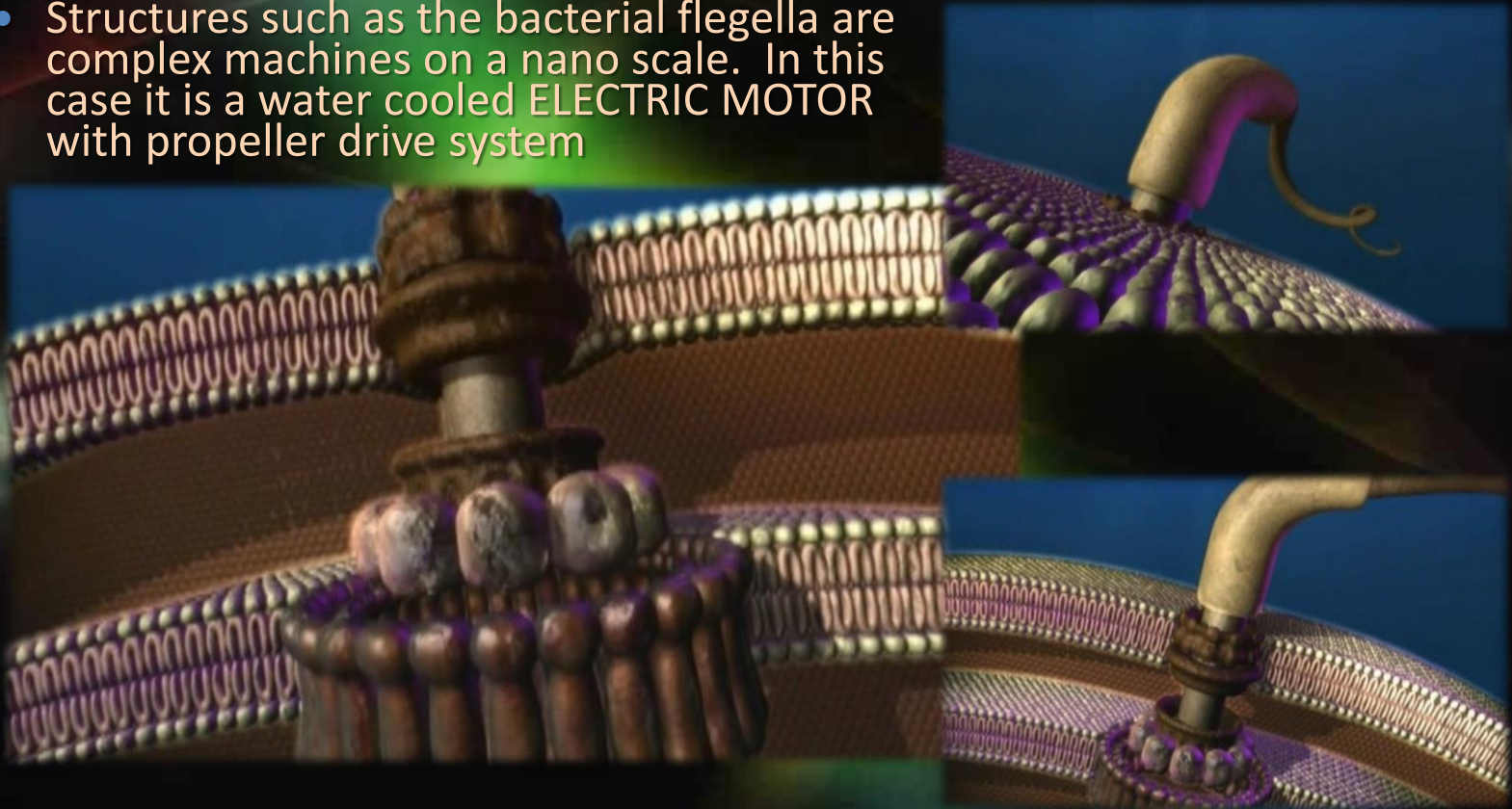
- Natural Semiconductors





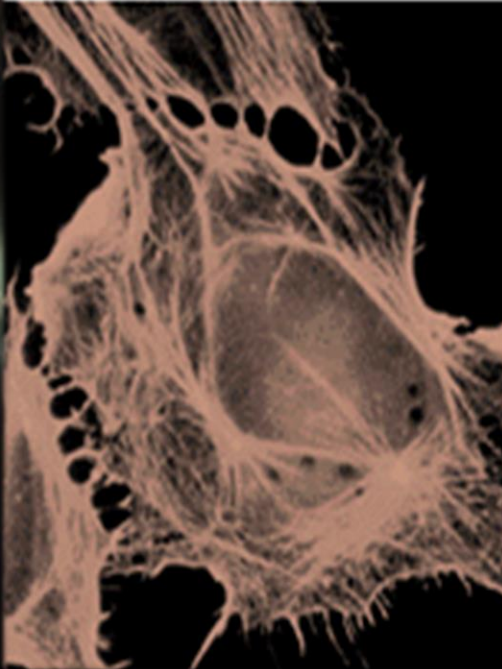
# Irreducible Complexity

- Structures such as the bacterial flagella are complex machines on a nano scale. In this case it is a water cooled ELECTRIC MOTOR with propeller drive system

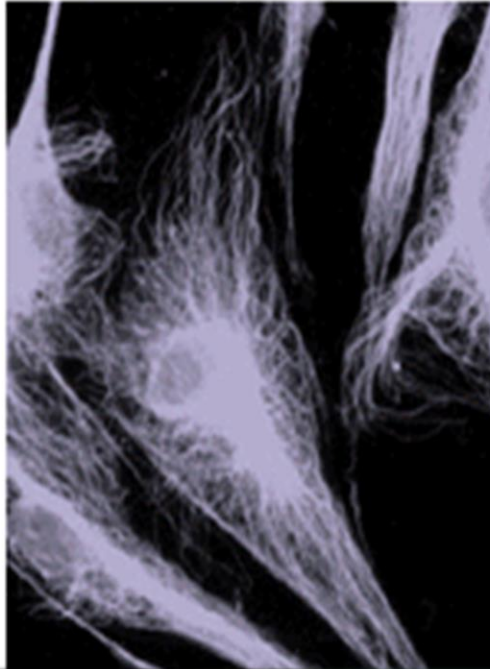
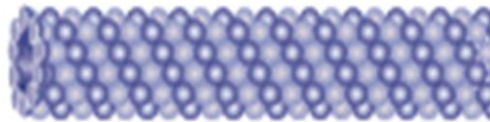


# Targetable Structures

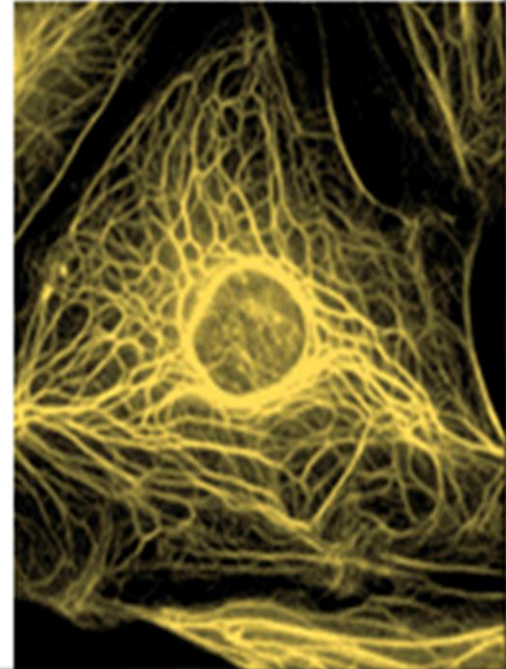
MICROFILAMENTS



MICROTUBULES



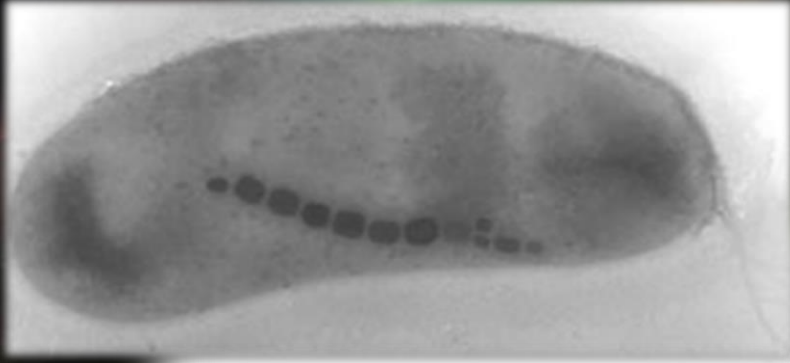
INTERMEDIATE FILAMENTS



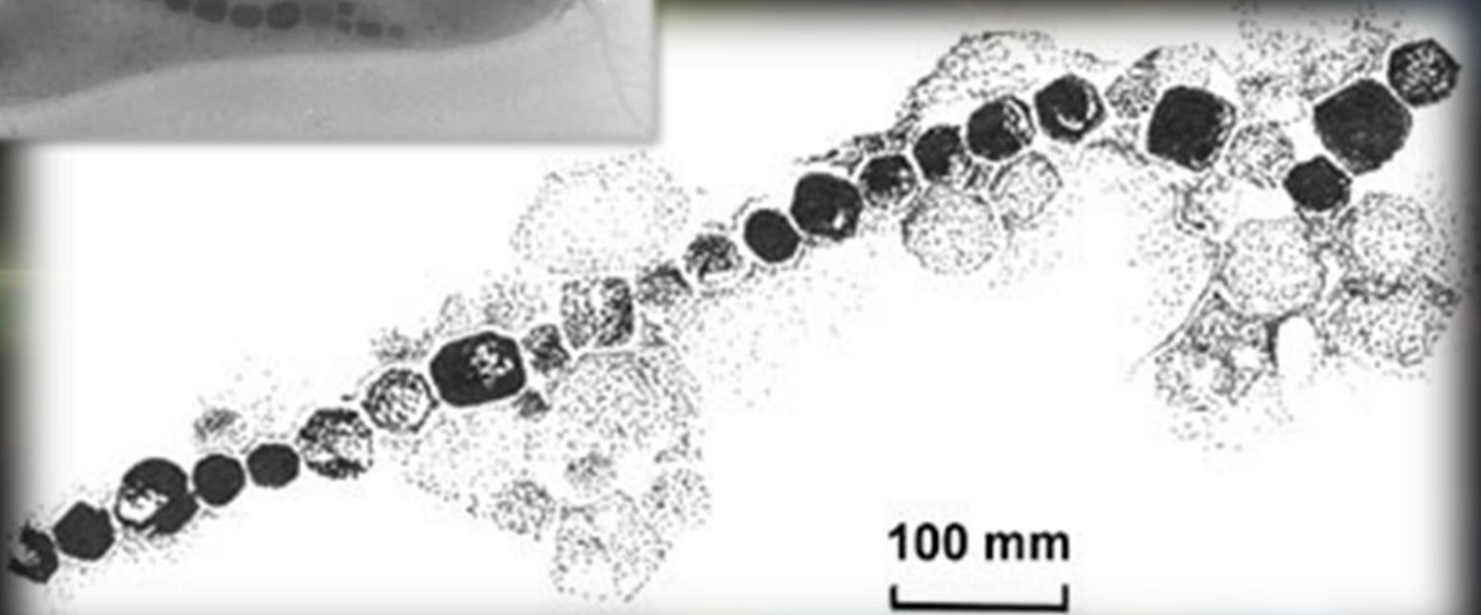
Illustrations: Laurie Grace; Photos: Donald E. Ingber; Robert D. Goldman, Northwestern University Medical School

[www.PulsedTechResearch.com](http://www.PulsedTechResearch.com) [www.PulsedTech.com](http://www.PulsedTech.com) [www.PulsedTech.RO](http://www.PulsedTech.RO)

# Targetable Structures



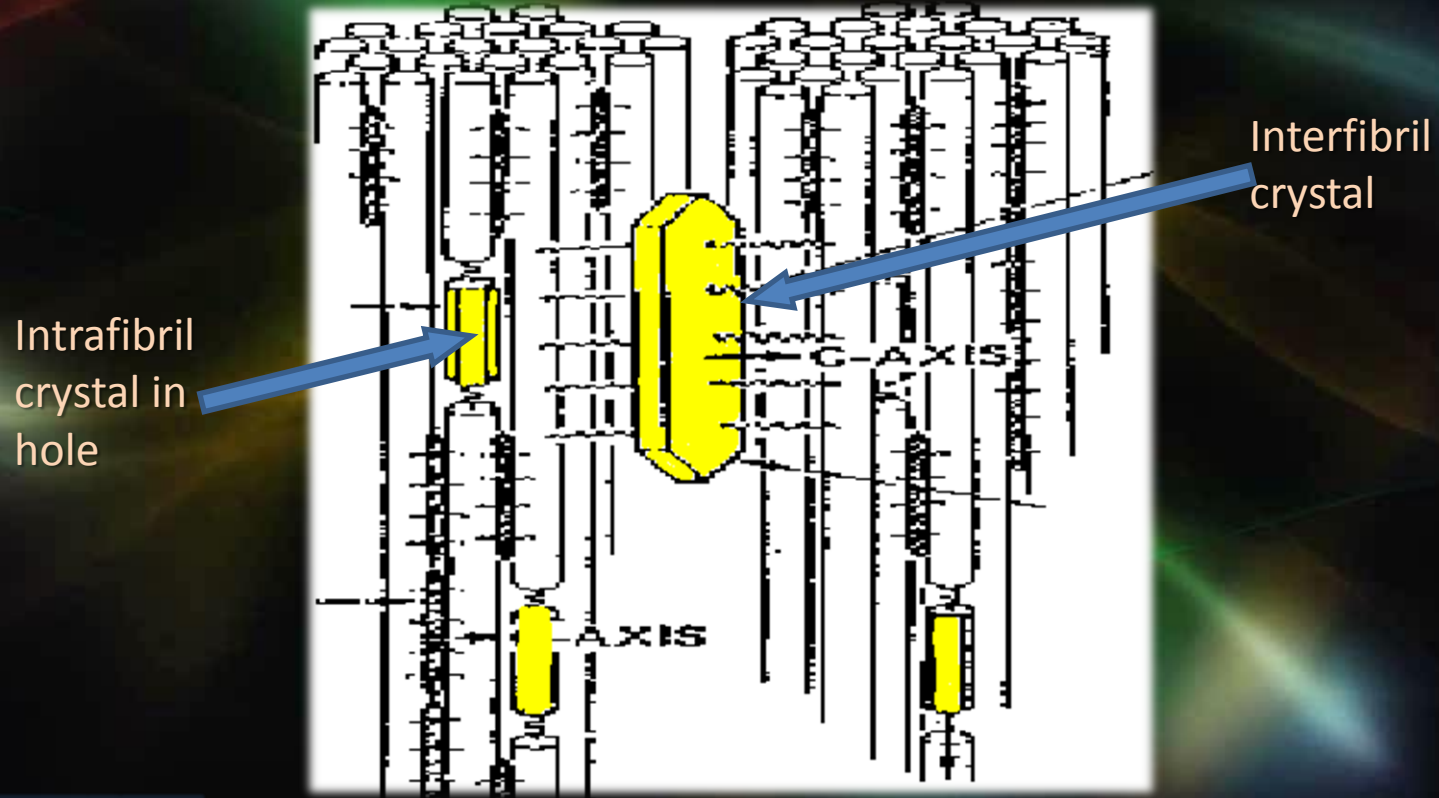
<http://www.affs.org> The Academy for Future Science  
Biomagnetism and Bio-Electromagnetism: The Foundation of Life





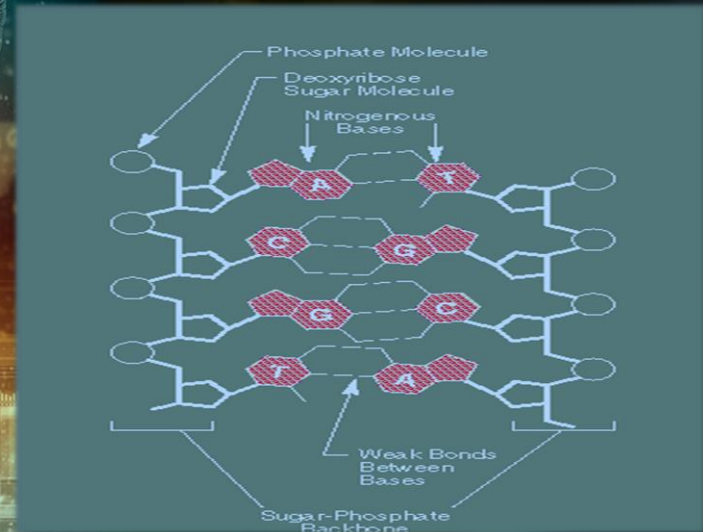
# Fragile Structures

- Bone is a coherent array of hardened “Living Liquid Crystals”



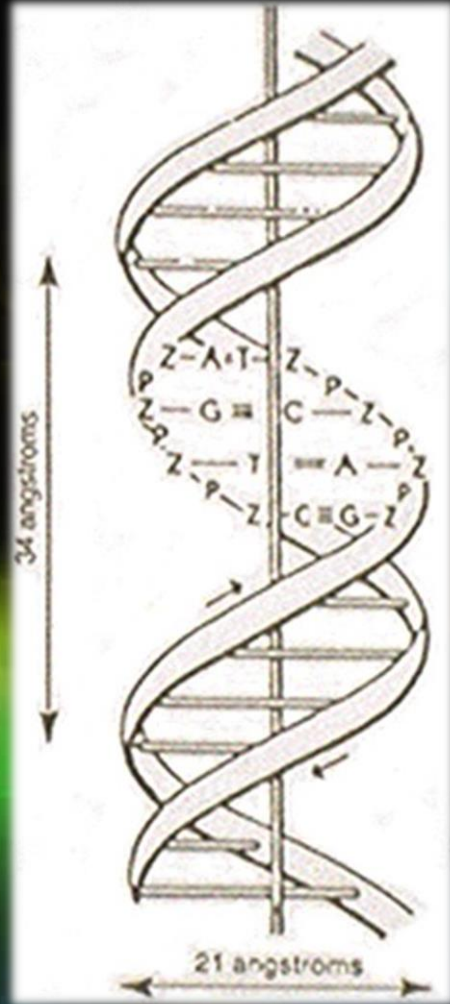
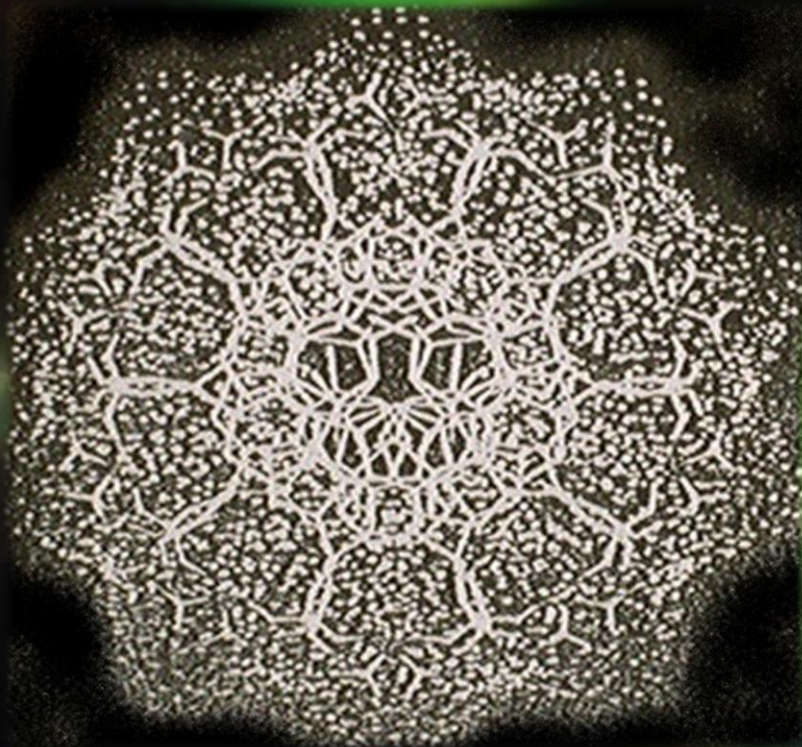


# Targetable Molecular Bonds



# DNA

- The physical DNA form provides “target-able” structures

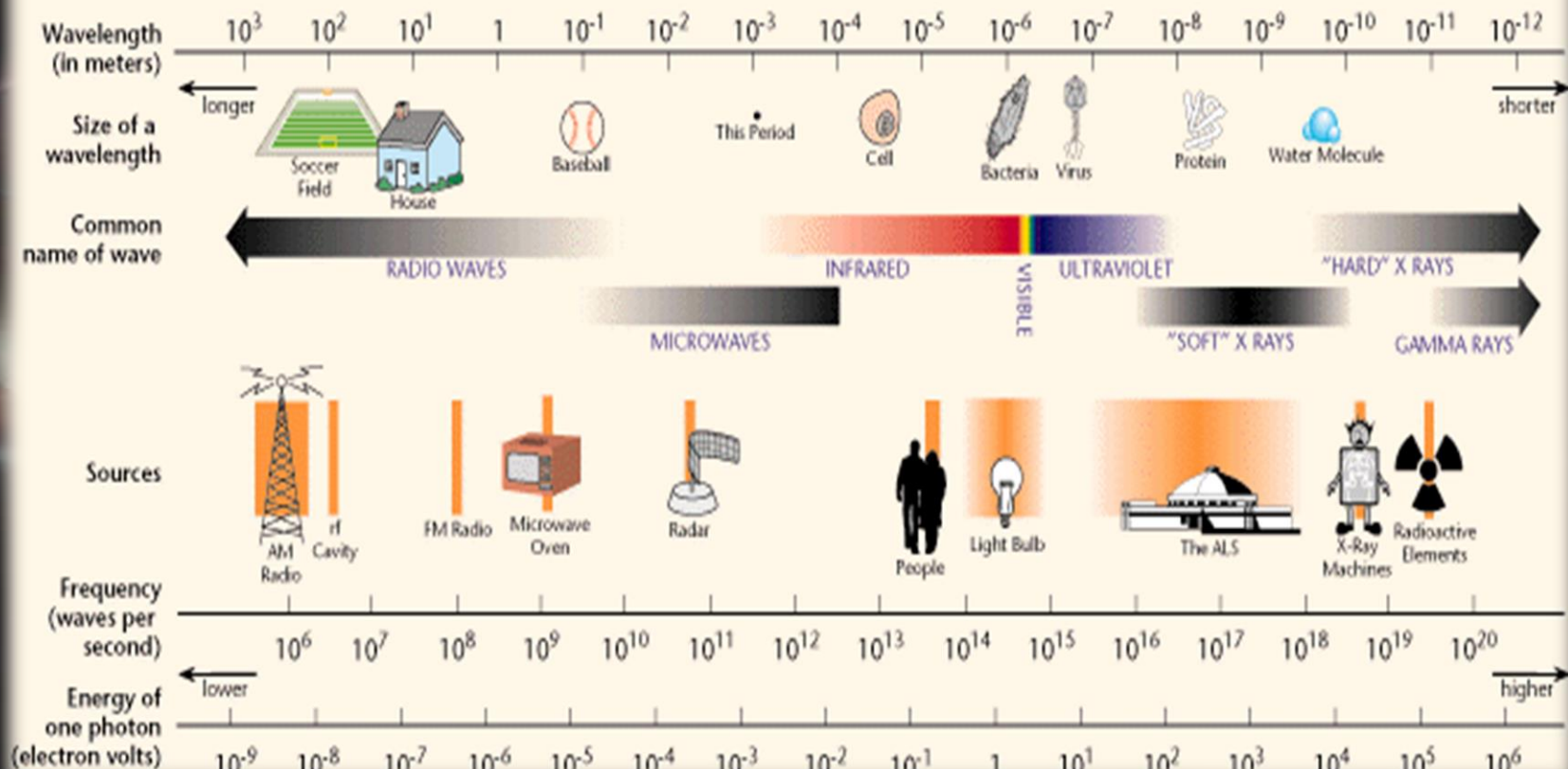




# “Junk DNA” not Junk!

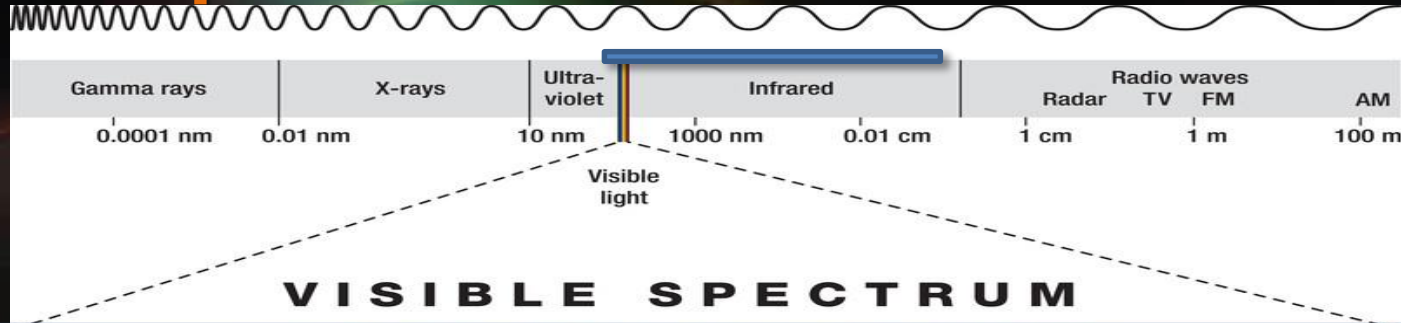
- Only 5% of the DNA strand is used for coding for protein reproduction. The other 95% of the DNA strand has been called "junk DNA" by some scientists. However, recent work by the Russian Academy of Science led by Dr. Pjotr Galjajev, has discovered remarkable things about the junk DNA.
- Languages have a pattern called syntax. Syntax is the study of the rules, or "patterned relations", that govern the way words combine to form phrases and phrases combine to form sentences. The junk DNA contains proteins in a syntax that appears to be a biological language. Not only that, this portion of the DNA is a recording device much like a computer CD. It is capable of holding three gigabytes of information!
- When coherent light was shined along DNA in a test tube, the light spiraled around the DNA. When the DNA was removed, the light continued to move in a spiral! This has come to be called the "DNA phantom effect". This work was repeated with the same results by Vladimir Poponin at the Hearthmath Institute in the U.S.
- Garjajev discovered that that the language on the DNA could be changed with modulated coherent light or with radio waves by using the resonating frequencies of DNA.
- Even more stunning was the discovery that the DNA could be changed with spoken voice if the voice is modulated onto the correct carrier wave! The correct frequency is ultraviolet.

# THE ELECTROMAGNETIC SPECTRUM





# Therapeutic Window



←slightly into uV

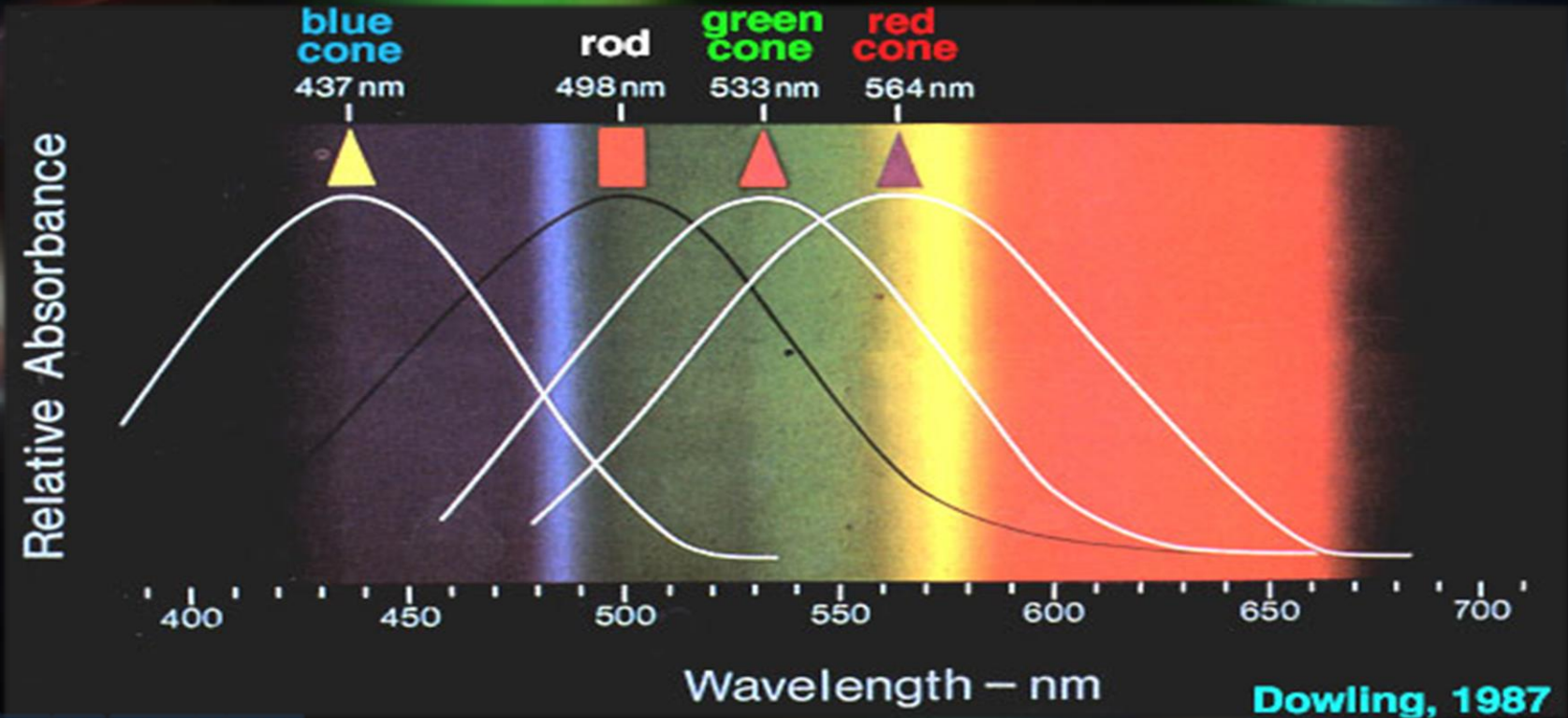
**THERAPEUTIC WINDOW**

well into IR →

- Currently known “positive” biological effects fall within a relatively narrow “therapeutic window”
- EM Emissions outside this window can be relatively “devastating” to living bodies and processes

# Biological Absorption & Conversion

- Different biological structures absorb specific wavelengths of energy and convert to other types of energy (electrical in the case of the eyes)



# Therapeutic Effects of Light

- In 1989 Jeffrey R. Basford, M.D. of the Mayo Clinic's Department of Physical Medicine and Rehabilitation, pointed out that the therapeutic effects of light therapy occurred both with lasers and non-laser light delivery systems. It is the basic properties of certain wavelengths of light that creates the effects (Basford, 1989).
- Wave-length dependent photobiological reactions that are well recognized and scientifically proven include: photosynthesis, vision, treatment of neonatal jaundice, and Vitamin D metabolism.
- **It takes no great leap of imagination to recognize that certain wavelengths of light may also affect healing, pain control and anti-aging**

# Known Effects

- Increase DNA and RNA synthesis
- Stimulate the production of collagen
- Stimulate the production of cellular energy
- Increase the formation of new blood vessels to replace damaged ones
- Increase lymph drainage
- Increase tissue repair by stimulating the activity of repair cells
- Modulate the activity of immune cells

(Baxter, 1997)



# LED vs. LASER

- They **produce multiple combinations** of healing wavelengths of light unlike laser devices, which produce light in fixed wavelengths “Laser light has shown some benefit for wound healing, but has limited surface area and wave lengths. (Whelan et al., 1999)
- They **can treat large areas** as opposed to the small areas that laser devices treat.
- They use advanced super bright LEDs that are capable of creating the right energy densities, light intensities and **multiple wavelengths** necessary for biological effects.

# PPLED Array for Localized Application

- Precision Pulsed LED Arrays may have many of the same characteristics & effects as do Pulsed Plasmas



# PPLED

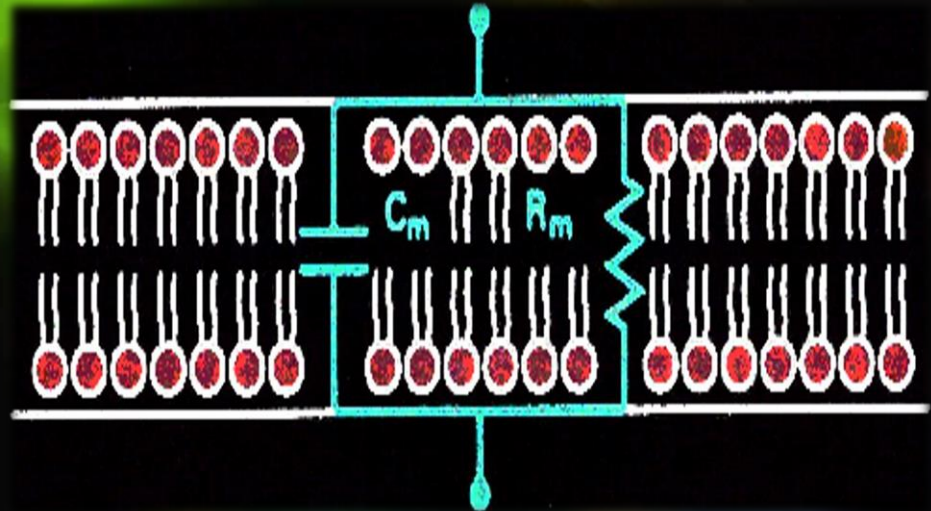
- Precision Pulsed LED Arrays may have many of the same characteristics & effects as do Pulsed Plasmas



# “Charging” of Cell Membranes



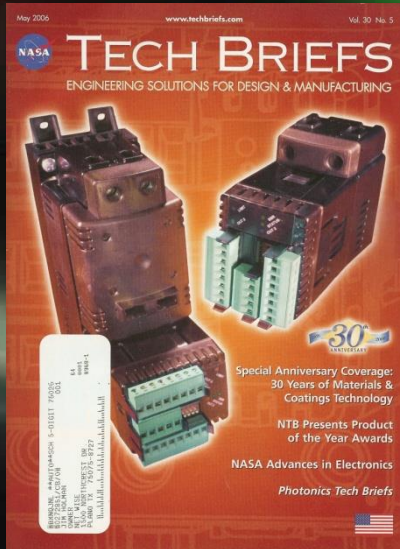
- Healthy cells have an electrical potential across the cell membrane of about 70 - 100 millivolts. Cell membrane potential is often lower in disease.





# WARP 10

## Warfighter Accelerated Recovery by Photobiomodulation



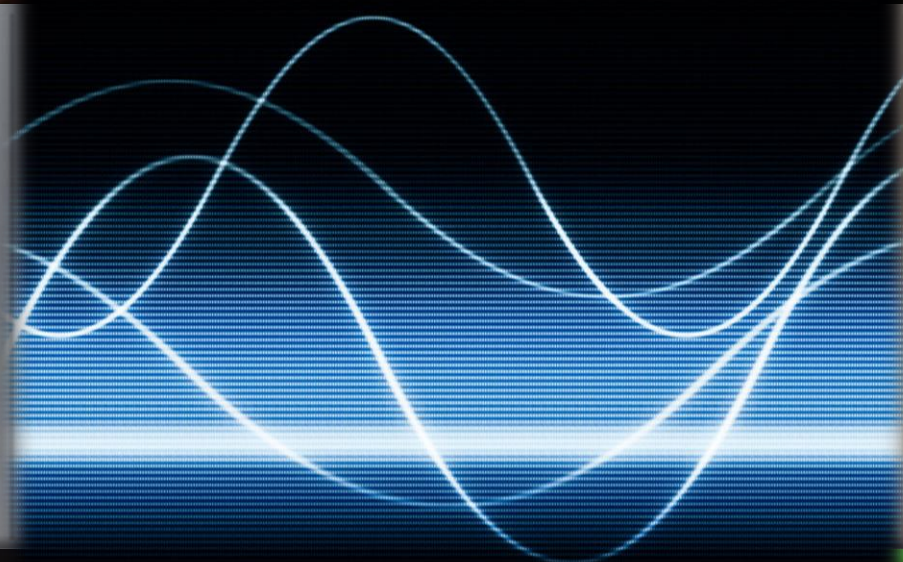
Source: NASA Tech Briefs – May 2006



# FDA Approved Devices

- Phototherapy being used to stimulate healing of mouth sores resulting from radiation treatment of cancer patient





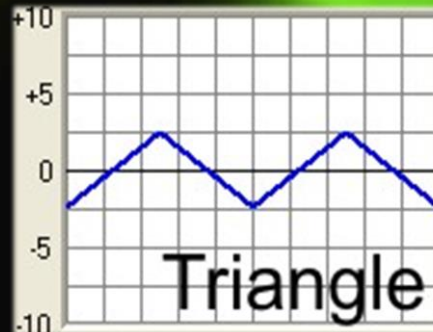
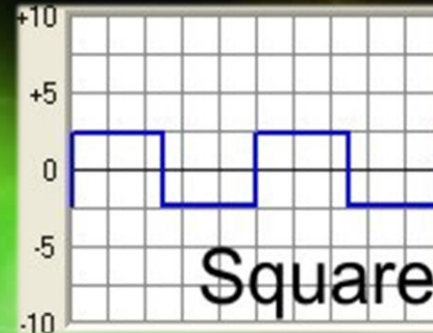
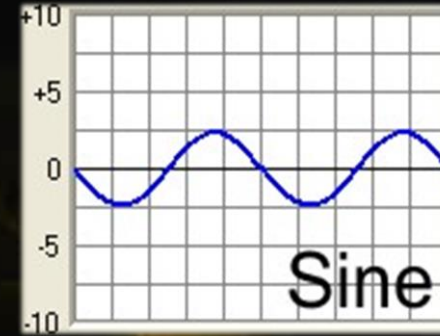
# Waveform

Frequency, Wave Shape  
& Important Characteristics



# Basic Waveforms

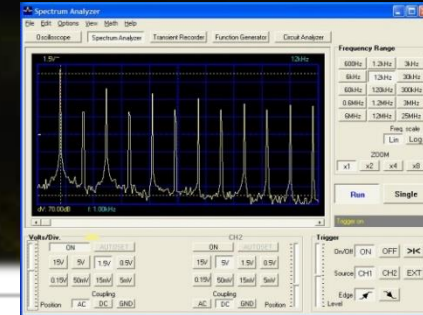
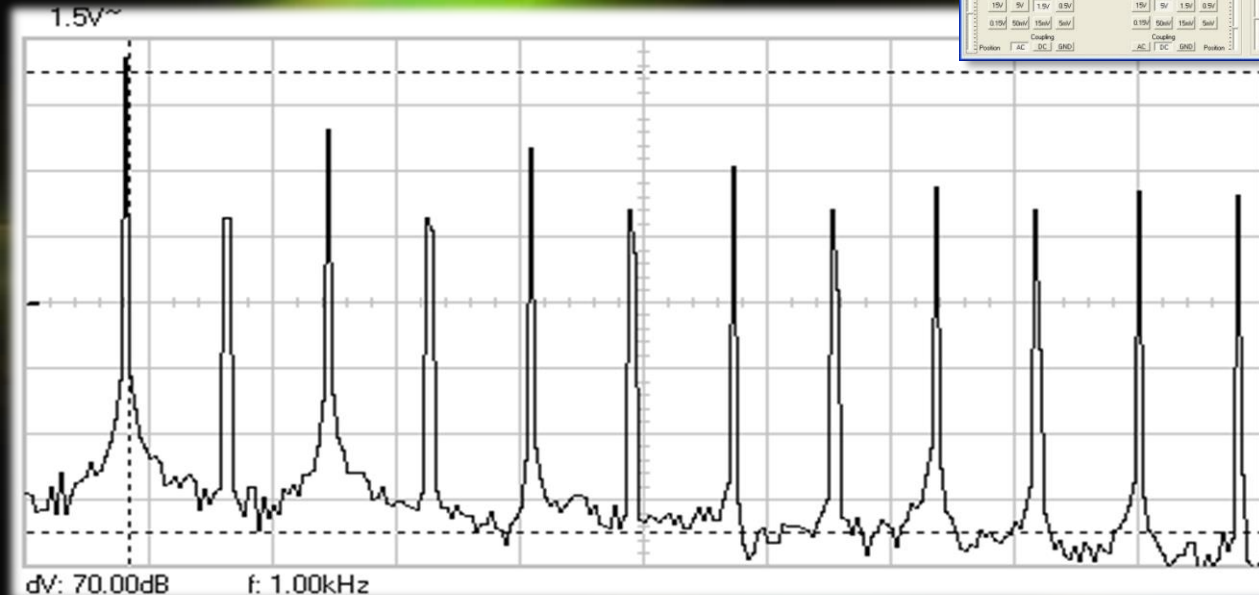
- SINE Wave
- SQUARE Wave
- TRIANGLE Wave  
(also called “sawtooth”)





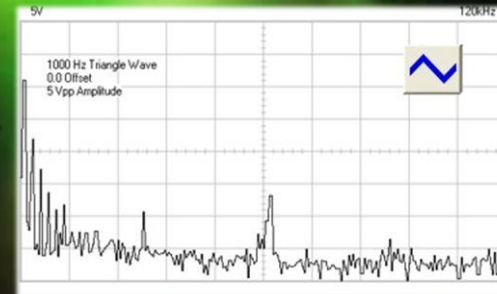
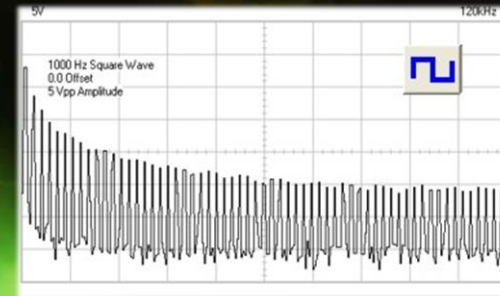
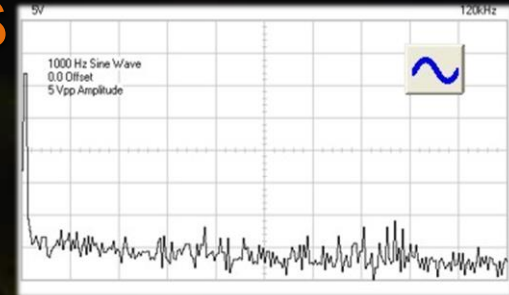
# Harmonics

- Harmonics are MULTIPLES of the generated wave
- Depending on the type of wave, the energy may also be exhibited in and shared in the harmonics

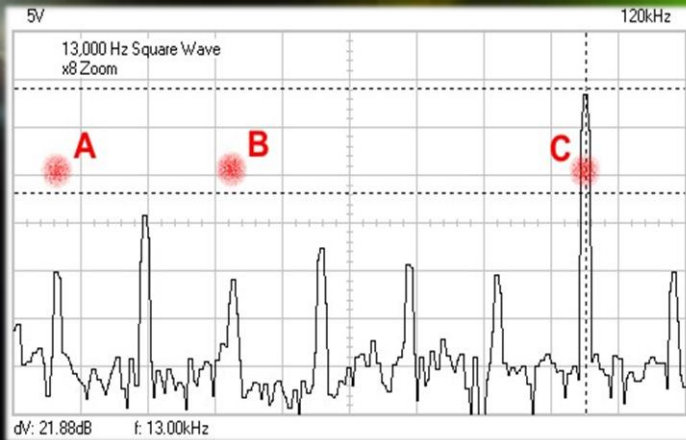
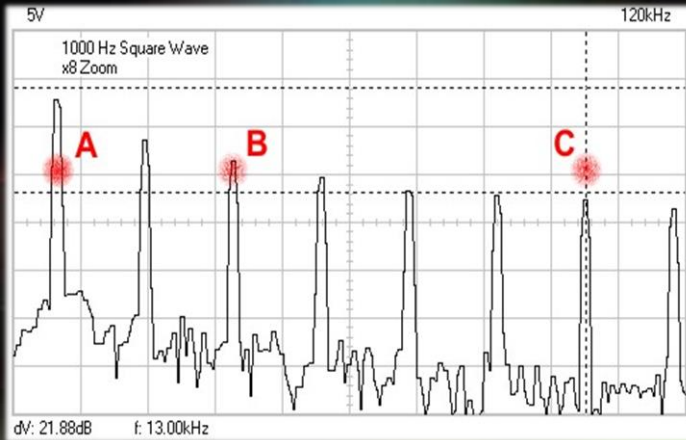


# Harmonic Spectral Analysis

- **Sine Wave** has virtually **NO** harmonics; all power is utilized at “fundamental” frequency
- **Square Wave** has an **ABUNDANCE** of harmonics which diminish in amplitude (power) with each successive harmonic. Power is spread across spectrum
- **Triangle Wave** also contains harmonics but are **limited** to relatively close to the fundamental frequency. These harmonics also reduce in amplitude (quickly). Most power is concentrated near the fundamental frequency



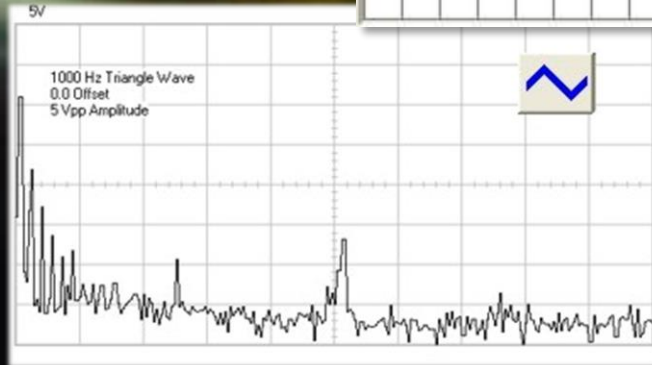
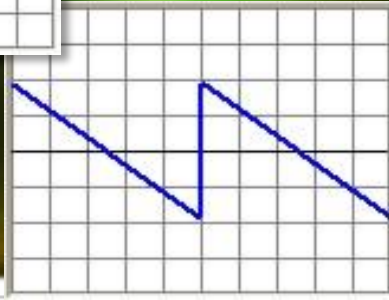
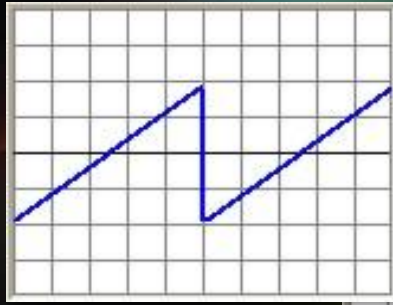
# Harmonic Targeting



- Pathogen Destruction requires BOTH accurate frequency AND substantial amplitude to bring about energy transfer/destruction.
- If the MOR of a pathogen is much higher than the fundamental frequency, the harmonic may not have enough amplitude to bring about change, coupling or destruction
- Pulsed Tech equipment typically has the ability to generate the higher frequencies at full power to bring about the desired effects.



# Modified Triangle



- **Ramp Up** and **Ramp Down** both maintain characteristics of the **Triangle** Waveform previously discussed
- When used with the P3 devices **Ramp Down** has definite advantages for optimizing signal to better drive output

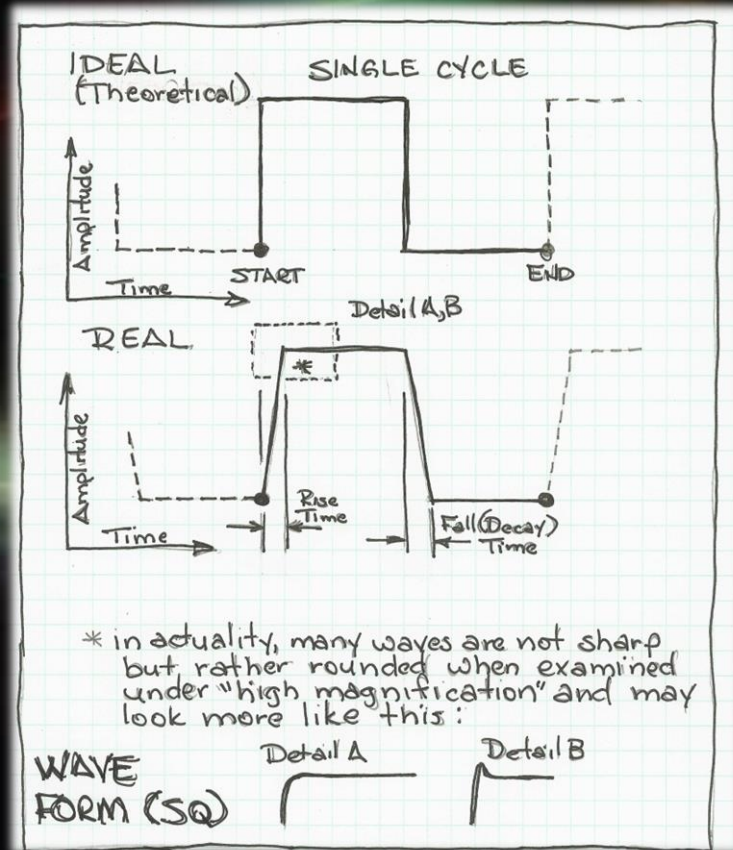
# Waveform Emission Strategy

Relative Visual Tube Output



Bottom Trace - Function Generator Signal Output  
Top Trace - IR Sensed Tube Output

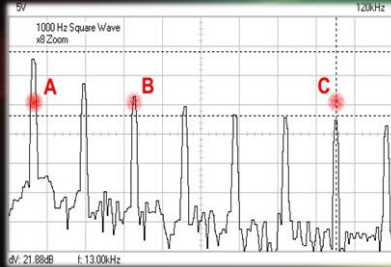
# Waveform “Rise Time”



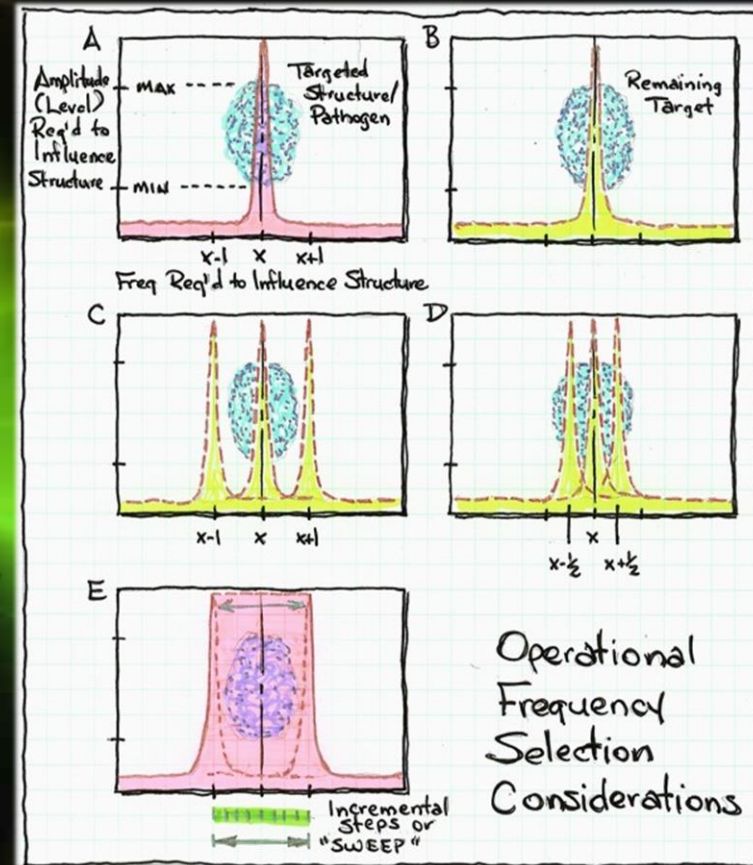
- Rise Time is a SUPER IMPORTANT characteristic when dealing with biological issues.
- Slow Rise Time is recognized by the body as a “foreign” signal and is filtered out by bio-chemical changes.
- Fast rise times and short duration pulses can pass across cell membrane while slower wave characters are ignored AND filtered.



# Frequency Accuracy/Sweeps

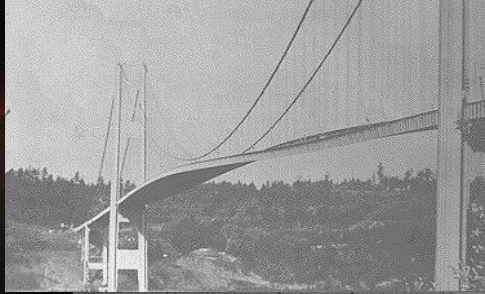


- Accurate Targeting by Frequency is important
- So ALSO is Targeting MUTATIONS which have been generated with slightly adjacent frequencies
- This is self-protection of pathogen's offspring





# Micro-Stepping vs. Sweep



- **Time at Frequency** is important to allow energy buildup and transfer to take place
- **Sweep** does not allow adequate time for substantial energy transfer to occur
- **Micro-Stepping** can be set for any duration or adjacent frequency increments

# GOOD Example of a BAD EXAMPLE

I am sure **EVERYONE** has seen some version of these MLM distributed devices

- Market “Targets” the technically ignorant and desperate
- Provides a “mindless” solution
- Constantly changes name to “protect the guilty”
- Has been sold as *Electrospectrum*, *Quantronics*, *ScalarTronics*, *Infinitech*, *ElectroMagic*, *AstroPulse*, *NatureTronics*, *EnergyWellness*, *BioSolutions*, *Global Wellness* (to name a “few”)



*Latest Generation\* is Global Wellness – Wellness Pro  
(pictured on right)*

# Analysis

Careful / diligent examination and autopsy:

- **Masked/hidden** frequency library
- **Limited** to 550 frequencies
- **Poor waveform** performance = potential “effectiveness” issues
- **VERY low frequencies**
- Documentation and distribution channels **contaminated** with legal issues and liabilities





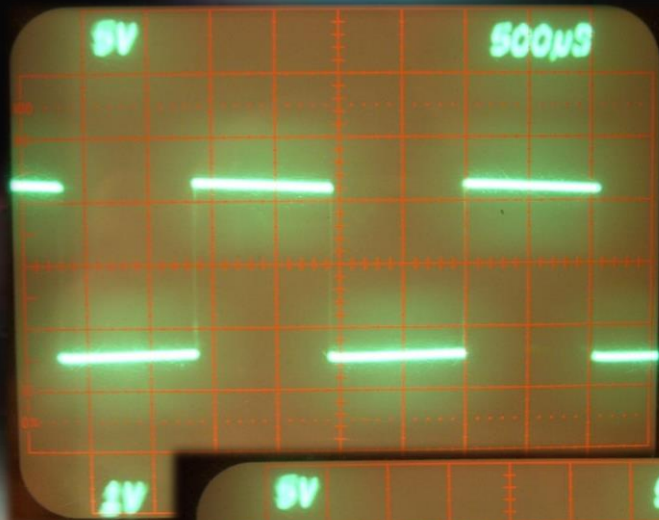
# Hidden/Unknown Frequency “CODES”

- Meticulous testing and measurements with the proper equipment enable us to determine precisely what frequency is embedded for each “code” however **these measurement capabilities are not typically available to most users.**
- NOTE very low frequency limitations

• 1	10 k	• 21	700	• 41	148
• 2	1.1 k	• 22	690	• 42	125
• 3	3 k	• 23	685	• 43	110
• 4	2.7 k	• 24	666	• 44	100
• 5	2.5 k	• 25	650	• 45	95
• 6	2.2 k	• 26	625	• 46	80
• 7	2.1 k	• 27	600	• 47	73
• 8	2.0 k	• 28	465	• 48	72
• 9	1.8 k	• 29	444	• 49	60
• 10	1.6 k	• 30	410	• 50	48
• 11	1.5-1.6 k ?	• 31	380	• 51	47.5
• 12	1.5 k	• 32	330	• 52	45
• 13	1000	• 33	320	• 53	40
• 14	880	• 34	250	• 54	35
• 15	832	• 35	240	• 55	28
• 16	802	• 36	230	• 56	27.5
• 17	787	• 37	220	• 57	26
• 18	775.4-776.4	• 38	200	• 58	20
• 19	760	• 39	190	• 59	18
• 20	727	• 40	160	• 60	12

*\*below 10 Hz I had problems  
with accurate measurement*

# REAL Waveform



Without contact  
(above)



With contact  
(below)

- Poor design does not take into consideration the unique “human” load placed on the frequency device
- **Slow rise time** (lower left) is quickly recognized by body as foreign and “filtered out” making use pointless!
- **<20μs rise time** is needed to be “ignored” and **utilized** by body





# A Little “Humor”\*

\* Unless it was you who had purchased the device

CAUTION: OPENING CASE VOIDS WARRANTY  
AND DISABLES INSTRUMENT PERMANENTLY  
INTERNATIONAL PATENTS PENDING.

S/N:

+